

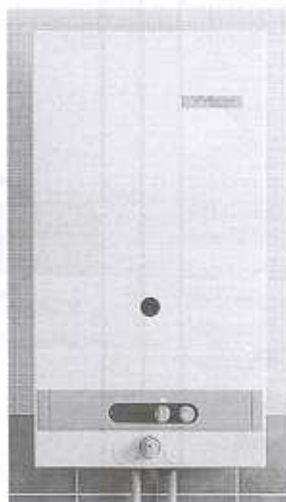


WORCESTER

Bosch Thermotechnik

WR 325 BF Gas Fired Multipoint Water Heater

USERS OPERATING INSTRUCTIONS



GC NUMBER 52 311 01

For your safety – if you smell gas:

1. Turn off the appliance
2. Open all windows and doors
3. Do not operate any electrical switches
4. Extinguish all naked flames
5. Contact the local Gas Region immediately

This appliance conforms to European Standard EN 26.

It is the law that all gas appliances are installed by competent persons.

The following instructions should be read carefully as the manufacturer cannot be held responsible for any damage to property, persons or animals caused by incorrect installation or operation of the appliance.

It is recommended that the appliance be serviced annually by a competent person or the local Gas Region.

The Users Instructions should be handed to the user and the function and operation of the appliance explained.

General Description

The WR 325 is a balanced flue instantaneous Gas Fired Multipoint Water Heater with a modulating gas output.

This appliance is not suitable for connection to a conventional chimney.

The outside terminal (or terminal guard if fitted) must be kept clear of obstructions at all times.

It is the law that all gas appliances are installed by competent persons such as a Corgi registered installer.

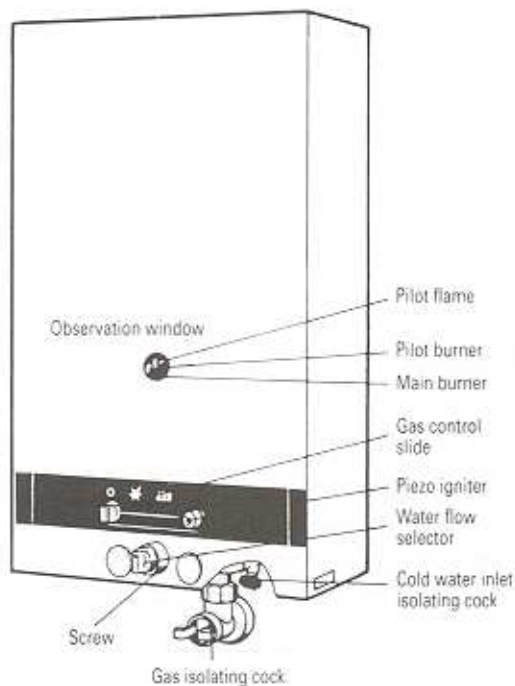
Failure to install appliances correctly can lead to prosecution.

It is in your own interest and that of safety to ensure that the law is complied with.

Technical Data

| | |
|------------------|--|
| Appliance type | WR 325 |
| Rated input | 25.5 kW |
| Rated output | 7.0 kW to 21.4 kW |
| Maximum gas rate | Natural gas – 2.7 m ³ /hr LPG – 2.0 m ³ /hr |

Fig. 1.



Performance

Temperature control turned out fully anti-clockwise:

4.0 to 12.3 litres/minute at 25°C temperature rise

Temperature control turned in fully clockwise:

2.0 to 6.5 litres/minute at 50°C temperature rise

The WR 325 water heater will operate for approximately 60 minutes on one therm of gas under continuous full load conditions.

Operation

STARTING UP (See Figs. 2 and 3)

On initial light up of a new appliance, a smell may be noticed but this is not harmful and will fade away after the appliance has operated for a time.

Move the gas control slide to the centre position.

Observe the pilot burner through the observation window and press in the centre button of the control slide and hold depressed while pushing in the Piezo igniter button two or three times. The pilot should light. Wait 10 seconds and then release the centre button of the gas control slide. The pilot should remain alight. If the pilot is not established, repeat the operations until a flame is established.

Note that on initial light-up or after prolonged shut-down, the establishment of the pilot may take several attempts due to the presence of air in the gas supply pipe.

Move the slide control fully to the right and fully open any hot water tap. The main burner should light.

Turn off the tap and the main flame will be extinguished.

Fig. 2. Gas control slide – ignition position

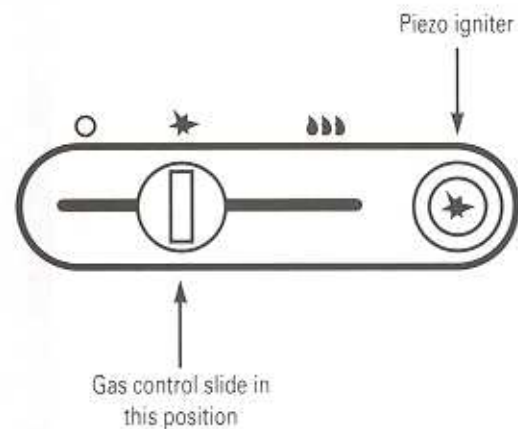
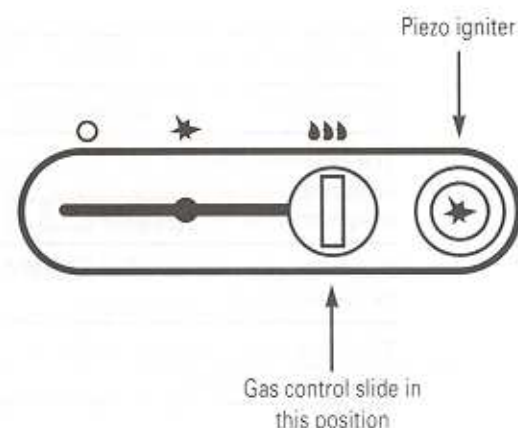


Fig. 3. Gas control slide – operating position



TEMPERATURE CONTROL (See Fig. 4.)

The Temperature Control Knob should be turned anti-clockwise to obtain a higher flow rate of water at a lower temperature rise or turned clockwise to obtain a higher temperature rise at a lower flow rate.

Fig. 4. Temperature control



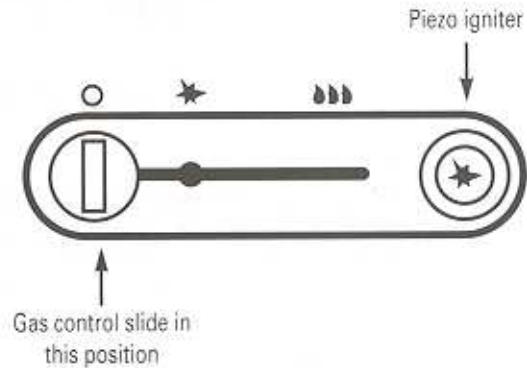
SHUT DOWN (See Fig. 5.)

When there is no demand for hot water over a long period, the pilot can be extinguished by moving the slide control fully to the left.

When hot water is required again, the pilot must be re-established.

If, during prolonged inactive periods, there is any risk of freezing, the heater should be drained by firstly isolating the appliance from the incoming cold water supply (close valve with black knob). Then open any hot water tap and drain down into a suitable container via the fitted drain cock.

Fig. 5. Gas control slide – shut down position



Servicing

To ensure continued efficient operation of the appliance it is recommended that it is checked and serviced as necessary at regular intervals.

The frequency of servicing will depend upon the particular

installation conditions and usage but in general once a year should be adequate.

It is the law that any service work must be carried out by a competent person such as British Gas or other Corgi registered personnel.

The casing should be wiped clean using a damp cloth.

Do not use abrasive or corrosive cleaners.



*Worcester Heat Systems Limited, Cotswold Way, Warndon, Worcester WR4 9SW
Telephone: (01905) 754624. Fax: (01905) 754619*

This booklet is accurate at the date of printing but will be superseded and should be disregarded if specifications and/or appearances are changed in the interests of continued improvement.

All goods sold are subject to our official Conditions of Sale, a copy of which may be obtained on application.

PUBLICATION 6 720 603 495, ISSUE 1 – JULY 1997