

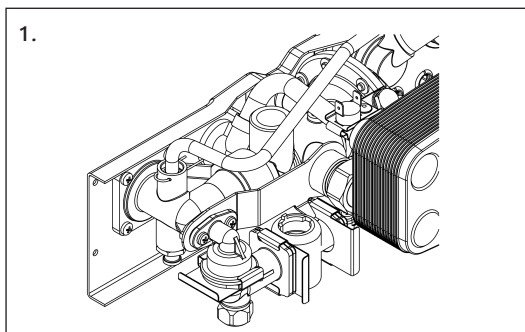
FITTING INSTRUCTIONS

NEW PLASTIC FLOW MANIFOLD

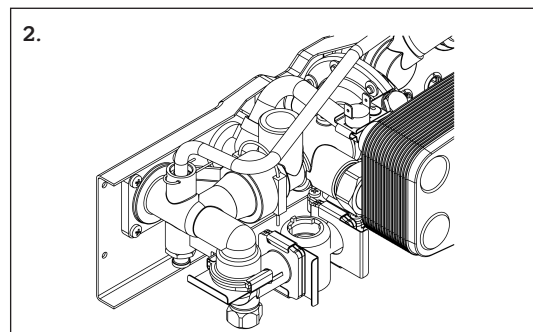
24CDi RANGE, 28CDi, 35CDi II, 26CDi EXTRA

THESE FITTING INSTRUCTIONS SHOULD BE USED IN CONJUNCTION WITH THE INSTALLATION AND SERVICE MANUAL PROVIDED WITH THIS APPLIANCE

ONLY COMPETENT PERSONNEL SHOULD ATTEMPT INSTALLATION



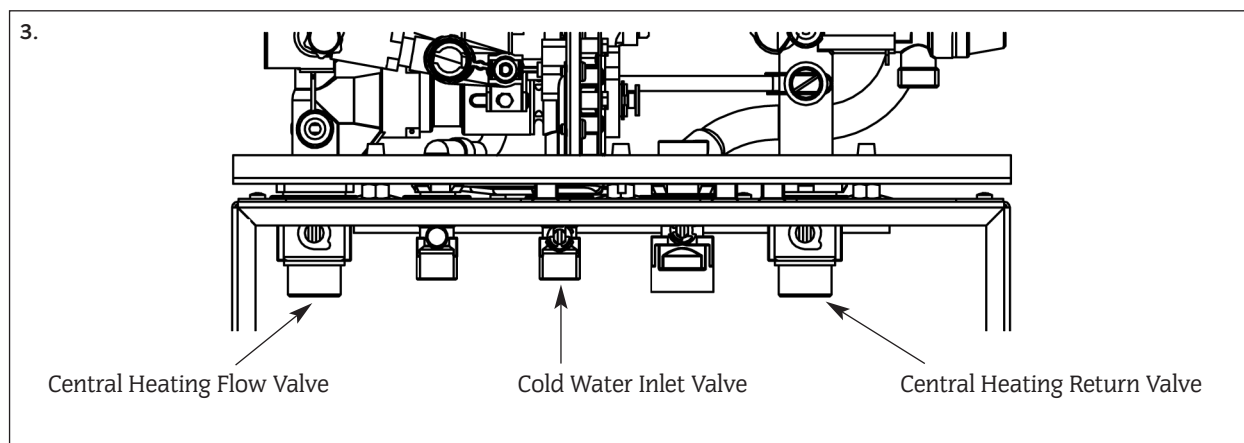
EXISTING TYPE



NEW TYPE

Before carrying out any work on the appliance ensure that the electricity supply is turned off.

1. Turn off the cold water inlet valve and open a hot water tap to drain the domestic hot water circuit. Turn off the central heating flow and return valves and drain the appliance.



2. Refer to the Installation and Servicing Instructions — Replacement of Parts Section: Water Diverting Valve.

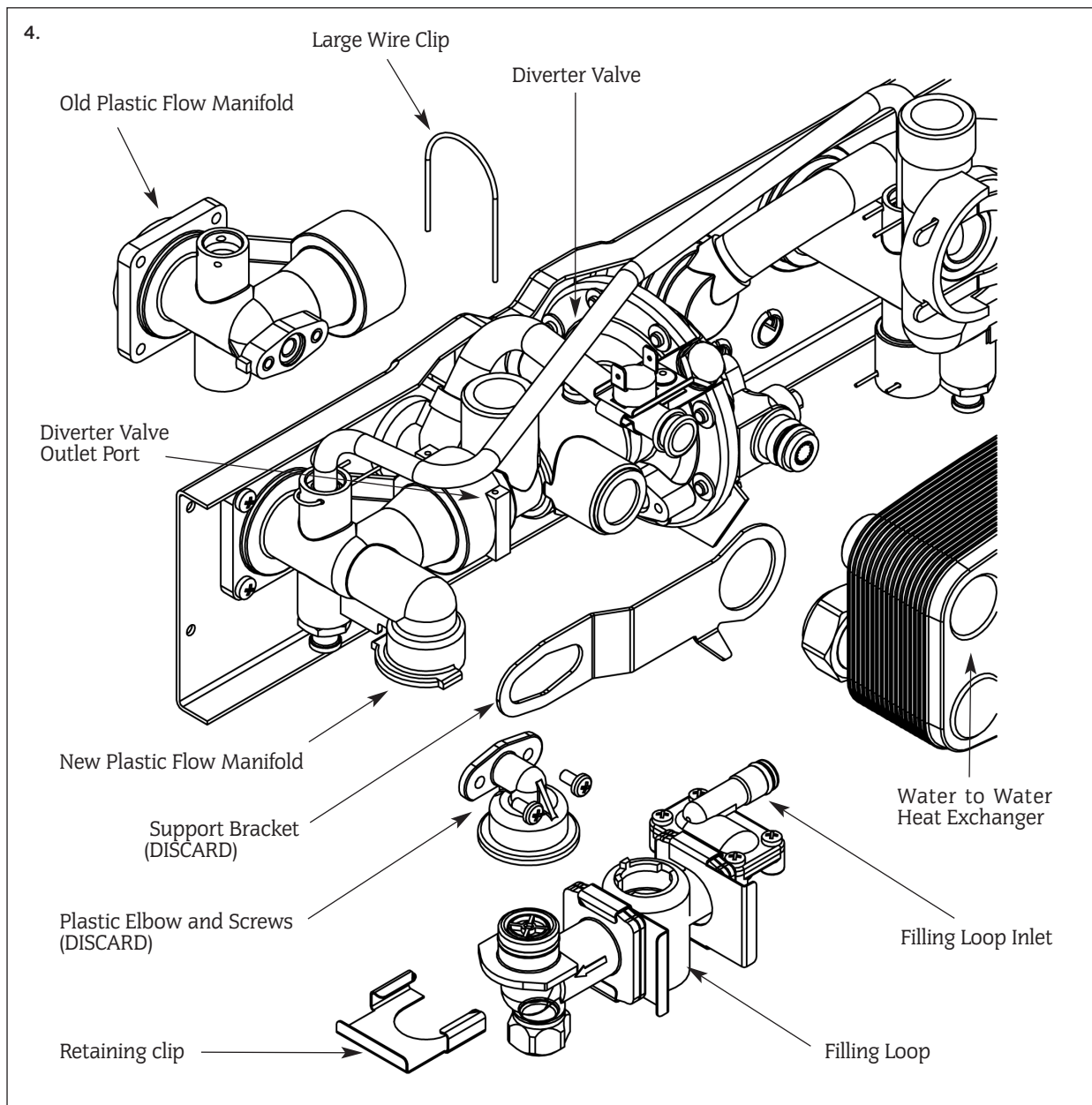
3. Remove the diverter valve and flow manifold from the appliance and remove the existing plastic flow manifold from the diverter valve assembly (See Installation and Servicing Instructions — Replacement of Parts and figure 4 overleaf).

4. Remove the retaining clip from the plastic elbow connected to the filling loop assembly and discard the elbow (See figure 4 overleaf).

5. Assemble the filling loop assembly to the new plastic manifold (See figure 4 overleaf). A small amount of silicone grease can be applied to the O-ring to help assembly. Secure with existing clip.

Continued overleaf

6. Insert the filling loop inlet into the diverter valve and gently push the new flow manifold onto the large diverter valve outlet port (See figure 4 below).
7. Fit the large wire clip supplied to secure the manifold to the diverter valve (See figure 4 below). Ensure the clip is aligned and fully entered.
8. Reassemble the diverter valve and flow manifold assembly, complete with filling loop, to the appliance.
9. Refer to the Installation and Servicing Instructions to complete the reassembly.



 **WORCESTER**
Bosch Group

Worcester Heat Systems Limited (Bosch Group), Cotswold Way, Warndon, Worcester WR4 9SW. Telephone: (01905) 754624. Fax: (01905) 754619. Technical Helpline (08705) 266241.
www.worcester-bosch.co.uk

This leaflet is accurate at the date of printing but will be superseded and should be disregarded if regulations change or product specifications are changed in the interests of continued improvement.
All goods sold are subject to our official Conditions of Sale, a copy of which may be obtained on application.

PUBLICATION 8 716 114 739a (11/07)