

# BAXI FIRES DIVISION

## ADDENDUM

This addendum is for the Airflame **Pebble** Models AF16NV, AC16NV, AF16NVRC & AC16NVRC.

Two additional clips have been added to the burner tray trim to improve the stability of the ceramic front pebbles.

### Fitting the clips.

Before fitting the ceramic fuel effect in place it is important that the clips supplied in this kit are fitted to the burner tray. Locate the clips as in figure 1.

### Fitting the front ceramic fuel effect pieces.

The installer and owner guide supplied with the ceramic fuel effect has a section titled 'FITTING THE FRONT AND REAR BASE PEBBLES'. Point 1 should be replaced with that shown below.

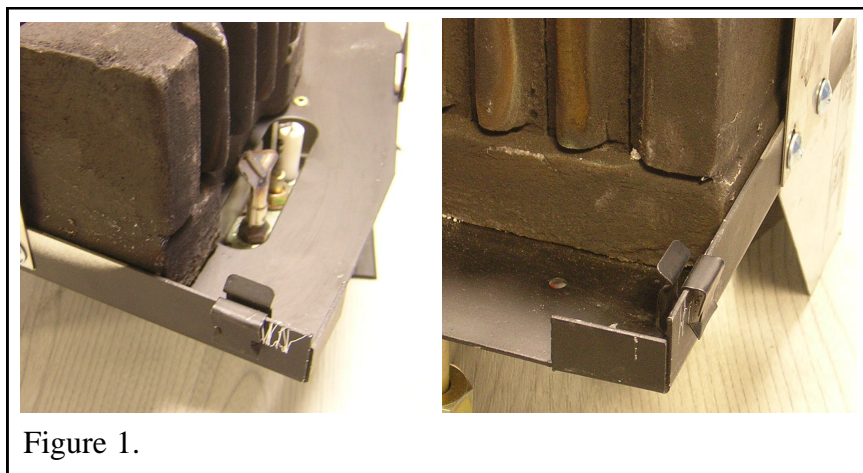


Figure 1.

### 1. Placing the front base pebbles.

Remove the two halves of the front base pebble from its protective packaging. Position the right base pebble in front of the burner as shown in figure 2. The left base pebble should be a tight fit. Because of this, the left side of the left base pebble should be located first (See figure 3). It may be necessary to gently push the two halves apart to locate the left hand base pebble (See figure 3).

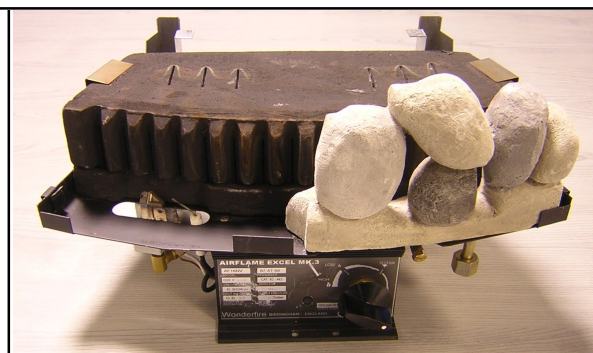


Figure 2. Fitting the front right hand base pebble.

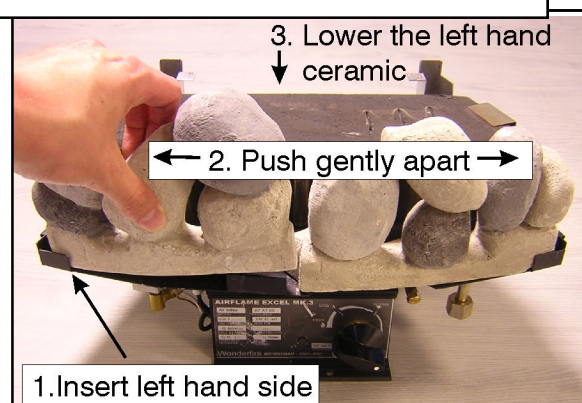


Figure 3. Fitting the front left hand base pebble.