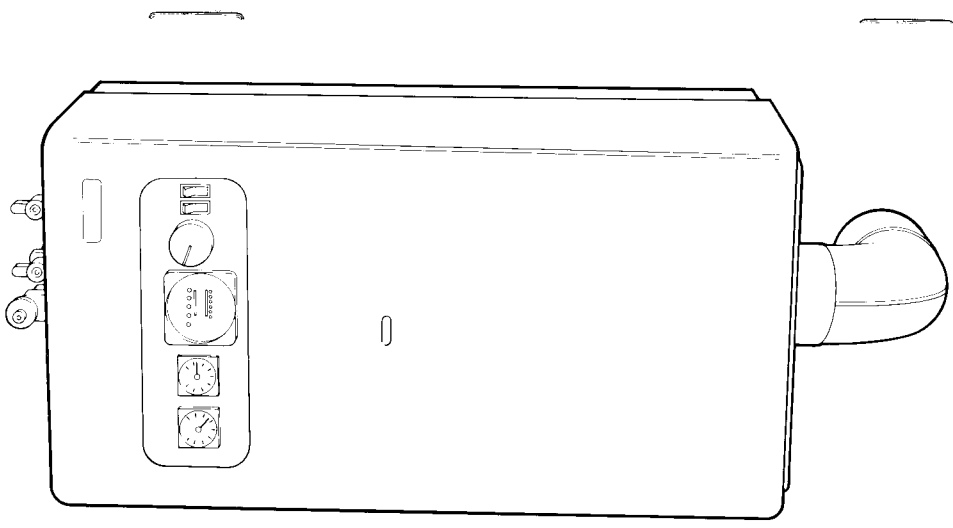


Vokera

12-48 RSSC Minute



Users Instructions

NATURAL GAS
SERIAL N. 773 UPWARDS
LPG GAS
SERIAL N. 13 UPWARDS

G C No. 41 094 03
British Gas Tested and Certified

HAND THESE
INSTRUCTIONS
TO THE USER.

BEFORE ATTEMPTING TO LIGHT APPLIANCE PLEASE MAKE SURE THAT IT IS CHARGED UP WITH WATER WITH THE NEEDLE POINTING BETWEEN 10 AND 15 ON THE PRESSURE GAUGE.

Gas Safety (Installation and Use) Regulation 1984

In your own interests and that of safety, it is the law that all gas appliances are installed and serviced by a competent person in accordance with this regulation.

Gas Leak or Fault

IF A FAULT OR GAS LEAK EXISTS OR IS SUSPECTED, TURN OFF THE APPLIANCE AND CONTACT YOUR LOCAL GAS REGIONAL OR SERVICE ENGINEER.

INTRODUCTION

Your Vokera 12-48 Mynute is a central heating boiler but with the addition of a hot water cylinder can supply stored hot water.

Boiler Location

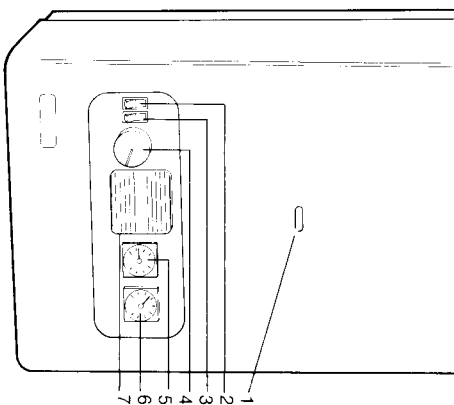
- Clearances
- Minimum - above 50mm (2in)(above flue)
- Minimum - below 200mm (8in) (from casing)
- Minimum - in front 600mm (24in) (from casing)
- Minimum - at sides 25mm (1in) (from casing)

If fitted in a compartment, the purpose provided ventilation openings must not be blocked, and should be checked periodically to ensure this. The compartment should not be used as a storage cupboard (e.g. for food).

NEVER HANG CLOTHES ETC. OVER THE APPLIANCE.

- 1 Burner Sight Glass Aperture
- 2 On/Off Switch
- 3 Mode Selector Switch
- 4 Boiler Thermostat
- 5 Temperature Gauge
- 6 Pressure Gauge
- 7 Time Switch (if fitted)

Note: Mode/Selector Switch (3), if the appliance is not fitted with a Vokera Time Switch (in position 7 on diagram) the switch must always remain in the Constant position or Central Heating will not operate.



ELECTRICITY SUPPLY

WARNING: THIS APPLIANCE MUST BE EARTHED

Connection should be made to a 240V ~ 50Hz supply. The appliance must be protected by a 3amp fuse if a 13amp (BS 1363) plug is used. If any other type of plug is used a 5amp fuse in the circuit is necessary.

To connect a plug:

As the colour of the wires in the mains lead to this appliance may not correspond with the coloured markings identifying the terminals in your plug, proceed as follows:-

The wire which is coloured green-and-yellow must be connected to the terminal in the plug which is marked with the letter E or by the earth symbol or coloured green or green-and-yellow.

The wire which is coloured blue must be connected to the terminal which is marked with the letter N or coloured black.

The wire which is coloured brown must be connected to the terminal which is marked with the letter L or coloured red.

1.0 Lighting the Boiler

1.1 Switch on the electrical supply at the mains isolating point.

1.2 Ensure that the gas supply to the appliance is turned on

1.3 Turn the appliance on/off switch (2) to ON (I)

1.4 Turn the appliance Mode Selector switch (3) to Constant (if external controls are fitted e.g. timeclock and/or room thermostat ensure they call for heat) the boiler will now go through an ignition sequence and the burner will light.

1.5 Should the boiler fail to ignite turn the boiler on/off switch to OFF (O) for a period of at least 10 seconds and proceed from step 1.3. Adjust the thermostat knob (4) to suit the weather (1 is the lowest setting; 9 is the highest).

N.B. (i) For the quickest heat up of the premises the highest setting is needed at first, turning down later.

(ii) When Room Thermostats are used it may be best to leave the boiler thermostat at a high setting and set the room thermostat as required.

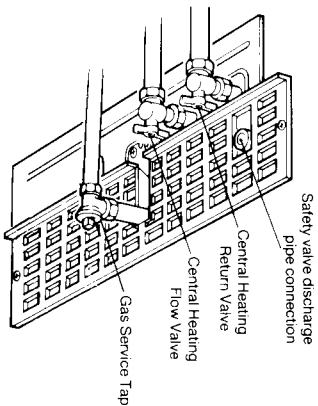
2.0 SAFETY LIMITS

2.1 System Pressure
The water pressure gauge (6) must read between 1.0/1.5bar when the system is cold. Leaks or radiator venting will reduce this. Call in your service engineer or installer if the pressure is too low. A built-in safety valve operates if boiler pressure exceeds 3.0bar (whether hot or cold).

If the safety valve operates (water/steam passing to drain) switch off and call in the Installer or Service Engineer.

2.2 If the appliance water temperature rises too high, a safety cut-out operates to extinguish the burner.

The appliance must be checked by a competent person, before relighting.
The central heating flow and return valves have a red handle which is vertical when open and horizontal, when closed. Leave in the vertical (open) position.



View of underside of appliance

3.0 SHUTTING DOWN THE SYSTEM
For short periods –
Turn mode selector switch (3) to rest
Turn off gas service tap.

For long periods –
Turn off at boiler on/off switch (2).
Turn off gas service tap.

Turn off main electricity supply to boiler. However, if the building is vacated when there is a risk of freezing shut down the boiler as described and drain the system. Open all heating radiator valves and drain through the cocks usually provided at the lowest point of the system. To ensure draining of radiators open radiator air cocks remembering to close them when the operation is complete. Alternatively install a frost stat and leave the mains electricity supply turned on.

N.B. Refilling a sealed system must be undertaken by a competent person following approved procedures.

4.0 RELIGHTING THE BOILER

Relight by following steps 1.0 to 1.6 given previously, after ensuring that refilling of the sealed system has been carried out.

5.0 CLEANING THE OUTER CASE

Use a clean damp cloth. Do not use abrasive cleaners.

6.0 SPARE PARTS AND SERVICING

Your Vokera 12-48 Mynute should be serviced annually. Please contact your local Vokera Service Department, your local Gas Region or a competent installer.

7.0 VOKERA TIME CLOCK

Uni 45 24 hour version and digital 7 day version

7.1 When a Vokera Time Clock is fitted in the boiler fascia it can be used to programme the central heating ON and OFF times.

7.2 Timed/Rest/Constant switch

For the time clock programme to operate the switch (3) must be in the Timed position. The central heating will operate regardless of the Time Clock programme if the Switch (3) is in the Constant position.

8.0 SETTING THE TIME CLOCK (Uni/45 24 hour version)

Remove plastic cover turn and lift off. The dial rotates in a normal clockwise direction and has a 24 hour dial.

The time of day is indicated by the white pointer (▽)

Turn the dial clockwise until the white pointer indicates the correct time of day.

Red tappets switch ON

Blue tappets switch OFF

Up to 3 pairs of tappets may be used. Spare tappets may be 'parked' in the centre of the dial.

Arrange the tappets in sequence around the dial pressing the pin into the required hole and the blade over the outside edge.

9.0 VOKERA TIME CLOCK (Digital 7 day version)

The Vokera digital clock has besides the normal individual daily setting facility a group timing feature. Group timing allows for a single time slot of the 12 available to be repeated over one of the following four periods:-

- MONDAY TO FRIDAY
- MONDAY TO SATURDAY
- MONDAY TO SUNDAY (day display blank)
- SATURDAY AND SUNDAY

***** THE DISPLAY WILL NOT SHOW UNTIL THE CLOCK HAS BEEN CONNECTED TO MAINS POWER FOR APPROXIMATELY TWO MINUTES *****

USE OF THE TIMER

Setting the time

1. Press and hold the button marked **⏸** whilst carrying out steps 2, 3 and 4.

2. Set hour of day using **h+** button.

3. Set minute of day using **m+** button.

4. Set day of week by repeatedly pressing button marked **Day**.

5. Releasing **⏸** button starts time switch running. Before entering any programme draw up a chart to arrange the settings required and enter in a chronological order; as on read back the programme displays in the order of entry.

Programming of 'Switching On' Operations

(a) Press button marked **timer** once. The time of day - as set - disappears from the display. **TIMER ON** --- appears.

(b) Press button marked **Day** until the day or group of days requiring setting are displayed.

(c) Set the 'ON' time of programme required by using **h+** and **m+** buttons for hours and minutes. Please read the notes at the end of these instructions if you wish this switching time to be carried out on several days.

Again press button marked **timer**, so that the command will be incorporated in the programme storage compartment. Symbol **TIMER OFF** --- will appear.

Programming of 'Switching Off' Operations

(a) Symbol **TIMER OFF** --- is visible in the display. Now insert the 'OFF' time of the programme required using **h+** and **m+** buttons for hours and minutes.

(b) Press button marked **Day** until the day or group of days requiring setting are displayed.

(c) In order to insert further switching times 'ON' or 'OFF' - operate **timer** button once or several times respectively. The display shows a vacant storage space; for instance timer **ON** ---.

Input of 'on/off' times as described above may be carried out; 6 on/off programmes can be set. Press the button marked **⏸** on completion of programme settings.

Notes

Multiple Week-Day Switching Groups

Apart from individual week days, the **day** button also serves to operate multiple day combinations.

- 1. Monday - Friday
- 2. Saturday + Sunday
- 3. Monday - Saturday

If no particular week-day is combined with the switching commands, they will be carried out daily.

Once a single day or one of these multi-day-combinations is incorporated in the storage compartment as part of the programme, this means that the programmed switching order will be carried out on each of these week-days at the same time.

Alterations or Checking of Switch Commands

For the purpose of alteration or checking the **timer** button serves to bring the individual programmed switching commands successively into the display at any time. Alterations are carried out by 'superscribing' of the individual command. To achieve this, follow the procedure for **Switching On and Off** (Programming of switching times).

Cancellation of Switching Commands

If keys 'H+' and 'M+' are used to superscribe a switching command in such a way that the hour and/or minute area in the display shows the symbol '-:--', the input is no longer effective, but it remains in the storage compartment as an inactive part.

Switching Condition Indication

The actual switching condition is shown in the displays as 'ON' or 'OFF' together with the time of day.

Pre-Selection Switch (Hand Symbol)

Independent of the programming, it is possible - at any given time - to advance the next following switching command by depressing the button marked with a hand symbol on the assumption, however, that the time of day has already been set.

Running Reserve

In the case of mains electricity failure, the integrated battery ensures that the actual time of day continues to operate and that the automatic switching programme remains intact.

The instrument can be programmed completely even without mains supply; provided the back-up battery is fully charged (charging time 70 hours).