

BGC2 INSTALLATION ADDENDUM.

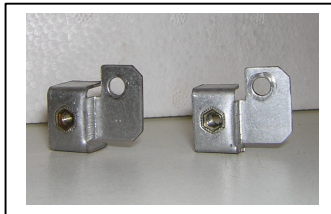
PLEASE READ BEFORE COMMENCING INSTALLATION

This addendum covers the following models:

BR65801
BR65811
BR65821

This addendum pack contains the following parts:

Casting Stand-off Bracket – Qty 2



PLEASE REFER TO THIS ADDENDUM IN CONJUNCTION WITH 'SECTION 12 – FRONT SURROUND INSTALLATION' OF THE INSTALLERS GUIDE.

12 FRONT SURROUND INSTALLATION

When securing the surround sides to the convection box brackets with the 2 screws provided use these same holes and screws to locate the casting stand-off brackets provided in this pack as shown below.

