

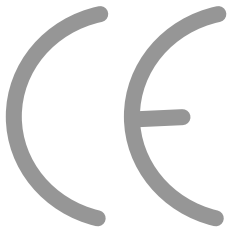
INSTALLATION AND OPERATING GUIDE

For

**Electric Stove
with Remote Control**

Model

815 - ND 18



This guide is intended to help you install and care for your electric heater. Please read carefully before installing and using your heater.

Important

Please keep your guide in a safe place for future reference

BAXI FIRES DIVISION
BIRMINGHAM
B24 9QP

Part Number 5112306 / 02

Customer Care

All our heaters are designed to meet the most stringent quality, performance and safety requirements to provide our customers with many years of trouble free service. This guide aims to improve your understanding and appreciation of your new heater, by providing simple and informative instructions to enable you to install it and to ensure that you benefit from the excellent performance and features it has to offer.

If you require further assistance, the **Technical Helpline** will be pleased to help. Please telephone **08706 061065** (local rates apply in the United Kingdom)
In the Republic of Ireland Telephone 0044 8706 061 065

FOR OTHER USEFUL TELEPHONE NUMBERS SEE THE BACK COVER

Important Safety Instructions

It is important that the following safety instructions are followed

Always

Always install the heater in accordance with the instructions. If in doubt obtain expert advice.

Always make sure the electrical socket is accessible and located adjacent to, but not above the heater.

Always disconnect the heater from the electrical supply before carrying out cleaning, maintenance or replacing the bulb.

Always use a fireguard when young children and infirm persons can come into contact with the heater.

Never

Never leave children unsupervised in a room where the heater is ON and unguarded.

Never obstruct or cover the fan outlet or force items into the heater openings.

Never install or use the heater anywhere where water is in use, i.e.

Bathrooms, Shower Rooms, Swimming Pools etc.

Never use aerosols or steam cleaners on or around the heater.

Never route the mains supply cable under carpet etc.

Never install the heater close to curtains or combustible materials.

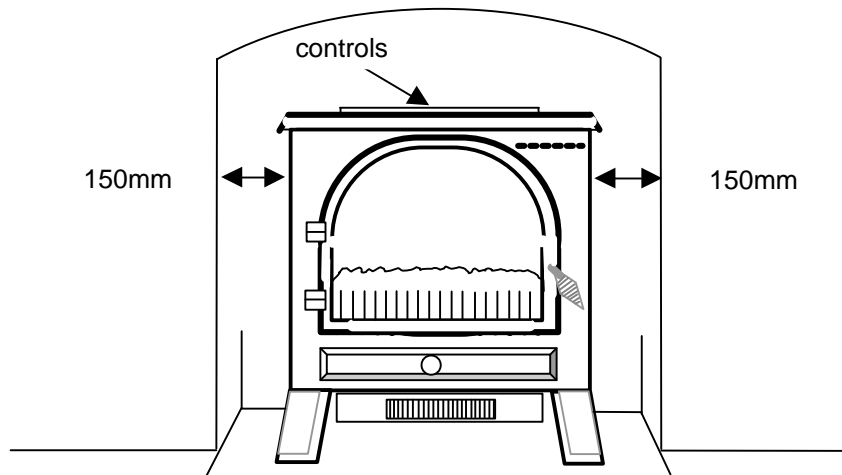
Never use the heater to dry clothes etc.

Never sit or stand on the heater

Siting

The heater is designed to be free standing on a hard level surface. When siting please bear the following points in mind

- If you are placing the heater in an alcove, make sure that 150mm-side clearance is maintained to ensure good air circulation
- The heater must not be located under a fixed electrical socket, the socket must always be accessible in order to disconnect the heater from the electrical supply for maintenance or when replacing a lamp.
- Keep hearth rugs and other soft furnishings etc. away from the front of the heater. They could obstruct the free flow of hot air from the fan and damage both soft furnishings and heater.



Installation

Before connecting the heater to the power supply for the first time, it is necessary to arrange the loose coal on the fuel support inside the heater. Open the heater door and arrange the coal on the support to achieve the desired effect.

It is not necessary to use all the supplied coal.

Important! This heater must be earthed.

The heater is supplied with a 3 pin 13A fused re-wireable plug with 1mm². 3 core mains cable,

L = Brown

N = Blue

E = Green/Yellow

The mains supply cable must be safely routed from the heater to an electrical socket. If the mains cable is damaged, to avoid a hazard it must be replaced by an authorised service agent or a similarly qualified person.

All external wiring between the appliance and the electrical supply, including the earth, shall comply with current IEE regulations

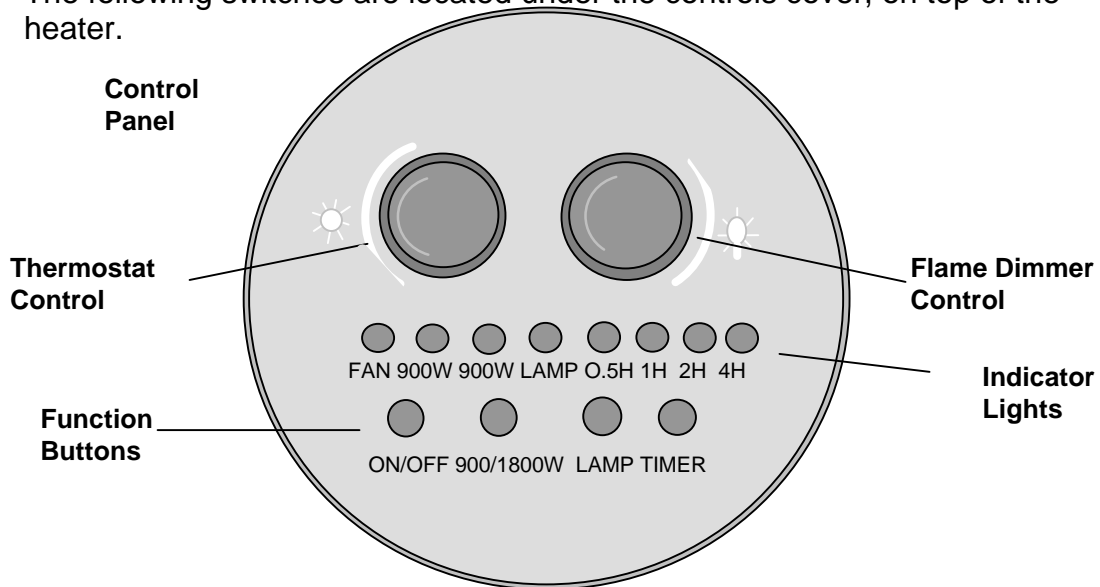
Operation

Never cover the heater or obstruct the opening at the base of the heater, this could cause overheating and consequent risk of fire.

The appliance can be controlled by the controls mounted on the heater, or using the remote control handset.

Heater Controls

The following switches are located under the controls cover, on top of the heater.



Thermostat Control - Adjust to maintain room temperature (cycles between 900 and 1800W)

Flame Dimmer Control - Adjust to set flame intensity

ON/OFF - Switches on FAN for cool air

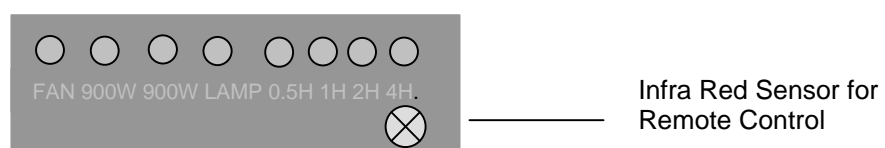
900W/1800W - Press once for Low heat setting
Press twice for High heat setting
Heater will only work if ON/ OFF button has first been pressed and if the thermostat is set above ambient room temperature. Switch off by pressing the ON/OFF button

LAMP - Switches flame/fuel effect on and off

TIMER - Press the timer button to set the heater or fan to run for a period of between a half-hour (0.5) and 7hours. The setting can be increased in 0.5H increments by repeatedly pressing the TIMER button. The indicator lights will shows the time set.

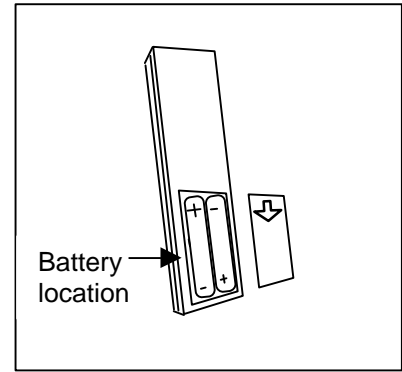
Tell Tale Panel

Situated at the front of the stove is a row of lights, which indicate the stove functions



Remote Control

Install the batteries into the handset by sliding the battery cover down on the rear of the handset
If the heater does not respond to the remote control handset commands, it is likely that the batteries require replacement
Replace the batteries with 2, AAA type. For longer battery life use Alkaline batteries.



Use

- Ensure the heater is plugged into the wall socket and switched **On**
- Aim the remote control towards the heater

The Tell Tale lamps on the front of the stove confirm the selected function

Flame effect	Press LAMP button Flame effect illuminates To switch off, press LAMP	900/1800W	
Fan	Press ON OFF button Fan operates To switch off press, ON/OFF	ON/OFF TIMER	
Low Heat (The Fan must be On)	Press ON/OFF button. Press 900/1800W button once Fan and 900 W heater operates To switch off, press ON/OFF	LAMP	
High Heat (Low Heat must be On)	Press 900/1800W button once Fan and 1800W heater operates To switch off, press ON/OFF		
Timer (Heater must be On)	Press Timer repeatedly button until time required is set Tell Tale light will show set time. I.e. 2+1+0.5 = 3.5 hours. To cancel, press ON/OFF button. Heater will switch off, or repeatedly press TIMER button until no time is set		

Maintenance

Always disconnect the heater from the electricity supply by removing the 3 pin plug and allowing the heater to cool before undertaking maintenance or replacing the bulb.

Bulb Replacement

The bulbs fitted to this heater are 230V 25W E14 small Edison screw, clear, candle bulbs
Due to the indeterminate life span and ease of replacement they are specifically excluded from the guarantee.

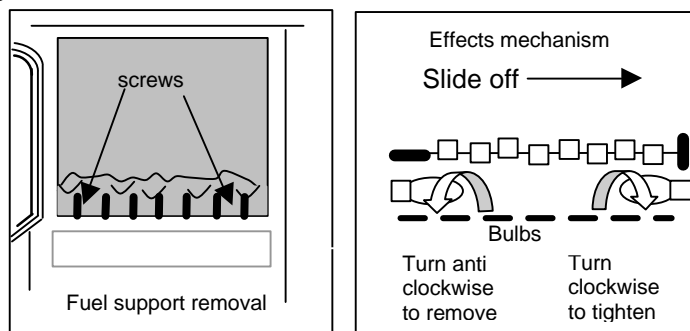
To replace a bulb.

To protect the hearth or soft furnishings we strongly recommend placing a newspaper on the floor before removing the loose coal from the fuel support. Remove the loose coal and place on the newspaper. Remove the two Philips

screws securing the fuel basket and put to one side. Pull forward and lift up the fuel support, detach the effects mechanism by sliding the rod off the motor shaft. Remove the faulty bulb by screwing the bulb anti-clockwise,

Fit the new bulb and reconnect the effects mechanism.

Relocate the fuel support and secure using the two screws. Replace the loose coals.



Automatic Cut Out

A cut out is fitted to the heating element to prevent damage due to over heating. If it operates due to an obstruction in the airflow, the heater must be turned off and allowed to cool for 15 minutes and the obstruction removed before restarting.

Care and Cleaning

The heater and glass parts need only to be wiped clean with a dry soft cloth, do not use polishes or abrasive materials.

Fault Finding

If the stove functions manually but not by the remote control handset replace the handset batteries (2 x AAA Alkaline)

No light from the fuel effect: possibly a bulb failure. Remove the faulty bulb as detailed above and check it in a table lamp that is known to work.

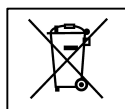
No heat or light: check the wall socket by plugging in a known working appliance. If functional, check the 13A fuse in the heater plug. If either fuse or socket is suspected, have them checked by an electrician.

Light but no heat: Check that the Thermostat on the stove is set above ambient room temperature, alternatively the automatic cut out, may have operated, see Automatic Cut Out section.

Disposal

The plug should be removed from the mains cable and the mains cable cut from the heater.

Environmental Protection.



Waste electrical products should not be disposed of with household waste. Please recycle where facilities exist. Check with your local authority or retailer for recycling advice.

Useful Telephone Numbers

- **Your Post Code**
- **Type of Fire**
- **Model / Name**
- **Serial Number**
- **The fault, problem or request**

**General advice about your heater
BFD TECHNICAL HELPLINE 08706 061065**

**To report faults or arrange for your heater to be serviced
BFD SERVICE 08706 090081**

**To order spares or for sales information
BFD SALES 08706 061 067**

**Callers in the Republic of Ireland
Call 0044 8706 061 065**