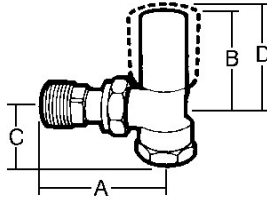




Pegler Yorkshire

369 WH Angle Pattern



Wheelhandle Radiator Valve Angle Pattern for iron

GENERAL INFORMATION

Size	Pattern No.	Box Qty	Code	Barcode	Price (£) ex VAT
1/2x1/2	369 CPWH	1	603028	5013866017803	£15.36

DIMENSIONS (mm)

Code	Description	A	B	C	D
603028	1/2 369NEW CP WH TERR ANGLE RAD VLV	65	N/A	25	54

PRESSURE & TEMPERATURE

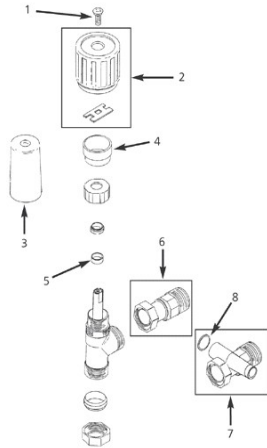
369 WH Angle Pattern	Minimum Operating Pressure (bar)	Maximum Cold Working Pressure (bar)	Maximum Hot Working Pressure (bar)
1/2 369NEW WH TERR ANGLE RAD VLV	No Minimum Operating Pressure	10.0 bar at temperatures up to 120°C	Not Suitable for Maximum Hot Working Pressure

MATERIAL SPECIFICATIONS

Number	Component	Material
1	Body	Forged Brass Chrome Plated
2	Head	Brass Bar
3	Spindle/Valve	Brass Bar
4	Glandnut/Gland	Brass Bar
5	Adapter	Forged Brass Chrome Plated
6	Capnut	Forged Brass Chrome Plated
7	Cone	Brass
8	Set Screw	Brass
9	Wheelhead	Polypropylene

SPARES

369 CPWH - Size - 1/2x1/2



Spare Key	Description	Code	Barcode	Date From	Date To	Price (£) ex VAT
1	S1CP CHROME SCREW	840025	5013866058820	January 01 1990	April 30 1995	£0.78
1	S4CP CHROME SCREW	840109	5013866058882	May 01 1995	April 30 1995To Current	£0.78
2	WH5 WHEELHANDLE	841100	5013866034008	May 01 1995	August 31 2009	£3.49
2	WH20 Wheelhandle	854505	5022050225450	September 01 2009	August 31 2009To Current	£3.49
2	WH4 WHEELHANDLE - DISCONTINUED	841001	5013866058974	January 01 1990	April 10 2009	£0.00
3	LS18 LOCKSHIELD - DISCONTINUED	841002	5013866058981	January 01 1990	April 10 2009	£0.00
3	LS19 LOCKSHIELD	841101	5013866034015	May 01 1995	April 10 2009To Current	£3.49
4	SL1 PLASTIC SLEEVE (WHITE)	840111	5013866058905	May 01 1995	April 10 2009To CurrentTo Current	£0.48
4	SL2 PLASTIC SLEEVE (GREY) - DISCONTINUED	840112	5013866058912	January 01 1990	April 30 1995	£0.00
5	GP13 GLAND PACKING	850328	5013866060038	May 01 1995	April 30 1995To Current	£0.86
5	GP13 GLAND PACKING	850328	5013866060038	January 01 1990	April 30 1995	£0.86
6	TP1CP CHROME TAIL PIPE	841006	5013866059001	May 01 1995	April 30 1995To Current	£9.85
6	TP1CP CHROME TAIL PIPE	841006	5013866059001	January 01 1990	April 30 1995	£9.85
7	TP2CP CHROME TAIL PIPE	841008	5013866059025	January 01 1990	April 30 1995	£12.32
7	TP2CP CHROME TAIL PIPE	841008	5013866059025	May 01 1995	April 30 1995To Current	£12.32
8	DC5 DUST CAP	841102	5013866059063	May 01 1995	April 30 1995To CurrentTo Current	£2.31
8	DC3 DUST CAP	841021	5013866059032	January 01	April 30 1995	£6.70

CARE & MAINTENANCE

Care

No regular aesthetic care is required for this product

Maintenance

No regular maintenance is required for this product.

For any further help please contact the Service Support Team on: 0800 1560050.

REGULATIONS

Regulations

Terrier manual radiator valves are generally approved to BS2767-10. For valves with compression connections, the connections are approved to BS EN1254-2; threaded connections comply with BS 21 or BS 2779.

They are designed for use only in an indirect open-vented or sealed water-filled central heating and/or indirect hot water system and for no other purpose.

They must be used within the pressure and temperature limits stated in the technical information table below.

Operating Conditions	Maximum
System Water Temperature (at 5bar)	120°C
Operating pressure (at 65°C)	10 bar

Under no circumstances must they be used in systems containing liquids or solutions other than water. The only exception is the addition of a proprietary central heating corrosion inhibitor, cleaner or anti-freeze to the system water in accordance with the manufacturer's instructions.

Terrier heating controls are manufactured to a strict quality assurance system in accordance with ISO 9000: 2001

GUARANTEE

Thermostatic and Manual Radiator Valves

Pegler Yorkshire Customcare 5 Year Guarantee - Terms & Conditions

Products are subject to a 5 year guarantee that is between Pegler Yorkshire and the final purchaser of the product.

The guarantee is subject to proof of purchase being supplied.

This guarantee does not affect any statutory rights the consumer may have in law.

The guarantee covers manufacturing or material defects and is not applicable where the product is fitted contrary to conditions of use in our literature.

The guarantee is subject to the following limitations:

1. The valves are designed for use only in an indirect open-vented or sealed water-filled central heating and/or indirect hot water system and for no other purpose.
2. They must be used within the pressure and temperature limits stated in the technical information table below.

Operating Conditions (Maximum)
 System Water Temperature (at 5bar) : 120 °C
 Operating pressure (at 65 oC) :10 bar

3. Under no circumstances must they be used to in systems containing liquids or solutions other than water. The only exception is the addition of a proprietary central heating corrosion inhibitor, cleaner or anti-freeze to the system water in accordance with the manufacturer's instructions.

4. Damage caused by abusive behaviour and accidental damage to the product are not covered by this guarantee

The extent of Pegler Yorkshire liability is limited to the cost of the replacement of the defective item and not to fitting or consequential damages.

APPROVALS



Kitemarked BS 2767