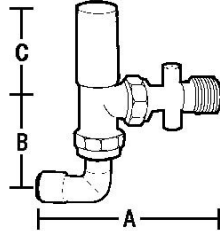


367 DLS Angle Pattern with Drain Off with Push Fit Elbow



Lockshield Radiator Valve Angle Pattern with Drain Off with Push Fit Elbow

GENERAL INFORMATION

| Size | Pattern No. | Box Qty | Code | Barcode | Price (£) ex VAT |
|----------|-------------|---------|--------|---------------|------------------|
| 10mmx1/2 | 367 CPDLS | 10 | 661009 | 5013866045592 | £19.22 |
| 15mmx1/2 | 367 CPDLS | 1 | 661010 | 5013866045608 | £19.93 |

DIMENSIONS (mm)

| Code | Description | A | B | C |
|--------|---|-----|----|----|
| 661009 | 1/2X15MM 367DCPLS CW 15X10 PF ELBOW CON | 97 | 49 | 52 |
| 661010 | 1/2X15MM 367DCPLS CW 15X15MM PF ELBOW CON | 106 | 58 | 52 |

PRESSURE & TEMPERATURE

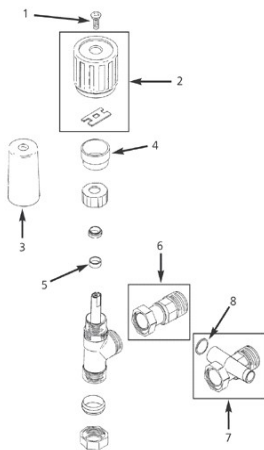
| 367 DLS Angle Pattern with Drain Off with Push Fit Elbow | Minimum Operating Pressure (bar) | Maximum Cold Working Pressure (bar) | Maximum Hot Working Pressure (bar) |
|--|----------------------------------|--------------------------------------|---|
| 1/2X15MM 367DCPLS CW 15X10 PF ELBOW CON | No Minimum Operating Pressure | 10.0 bar at temperatures up to 120oC | Not Suitable for Maximum Hot Working Pressure |

MATERIAL SPECIFICATIONS

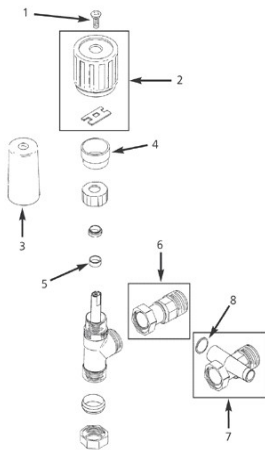
| Number | Component | Material |
|--------|----------------|----------------------------|
| 1 | Body | Forged Brass Chrome Plated |
| 2 | Head | Brass Bar |
| 3 | Spindle/Valve | Brass Bar |
| 4 | Glandnut/Gland | Brass Bar |
| 5 | Adapter | Forged Brass Chrome Plated |
| 6 | Capnut | Forged Brass Chrome Plated |
| 7 | Cone | Brass |
| 8 | Set Screw | Brass |
| 9 | Lockshield | Polypropylene |
| 10 | Connector | Brass Chrome Plated |

SPARES

367 CPDLS - Size - 10mmx1/2



| Spare Key | Description | Code | Barcode | Date From | Date To | Price (£) ex VAT |
|-----------|--|--------|---------------|-----------------|-----------------------------------|------------------|
| 1 | S1CP CHROME SCREW | 840025 | 5013866058820 | January 01 1990 | April 30 1995 | £0.78 |
| 1 | S4CP CHROME SCREW | 840109 | 5013866058882 | May 01 1995 | April 30 1995To Current | £0.78 |
| 2 | WH4 WHEELHANDLE - DISCONTINUED | 841001 | 5013866058974 | January 01 1990 | April 10 2009 | £0.00 |
| 2 | WH5 WHEELHANDLE | 841100 | 5013866034008 | May 01 1995 | April 10 2009To Current | £3.49 |
| 3 | LS19 LOCKSHIELD | 841101 | 5013866034015 | May 01 1995 | April 10 2009To CurrentTo Current | £3.49 |
| 3 | LS18 LOCKSHIELD - DISCONTINUED | 841002 | 5013866058981 | January 01 1990 | April 10 2009 | £0.00 |
| 4 | SL2 PLASTIC SLEEVE (GREY) - DISCONTINUED | 840112 | 5013866058912 | January 01 1990 | April 30 1995 | £0.00 |
| 4 | SL1 PLASTIC SLEEVE (WHITE) | 840111 | 5013866058905 | May 01 1995 | April 30 1995To Current | £0.48 |
| 5 | GP13 GLAND PACKING | 850328 | 5013866060038 | May 01 1995 | April 30 1995To CurrentTo Current | £0.86 |
| 5 | GP13 GLAND PACKING | 850328 | 5013866060038 | January 01 1990 | April 30 1995 | £0.86 |
| 6 | TP1CP CHROME TAIL PIPE | 841006 | 5013866059001 | May 01 1995 | April 30 1995To Current | £9.85 |
| 6 | TP1CP CHROME TAIL PIPE | 841006 | 5013866059001 | January 01 1990 | April 30 1995 | £9.85 |
| 7 | TP2CP CHROME TAIL PIPE | 841008 | 5013866059025 | May 01 1995 | April 30 1995To Current | £12.32 |
| 7 | TP2CP CHROME TAIL PIPE | 841008 | 5013866059025 | January 01 1990 | April 30 1995 | £12.32 |
| 8 | DC3 DUST CAP | 841021 | 5013866059032 | January 01 1990 | April 30 1995 | £6.70 |
| 8 | DC5 DUST CAP | 841102 | 5013866059063 | May 01 1995 | April 30 1995To Current | £2.31 |



367 CPDLS - Size - 15mmx1/2

| Spare Key | Description | Code | Barcode | Date From | Date To | Price (£) ex VAT |
|-----------|--|--------|---------------|-----------------|-----------------------------------|------------------|
| 1 | S1CP CHROME SCREW | 840025 | 5013866058820 | January 01 1990 | April 30 1995 | £0.78 |
| 1 | S4CP CHROME SCREW | 840109 | 5013866058882 | May 01 1995 | April 30 1995To Current | £0.78 |
| 2 | WH4 WHEELHANDLE - DISCONTINUED | 841001 | 5013866058974 | January 01 1990 | April 10 2009 | £0.00 |
| 2 | WH5 WHEELHANDLE | 841100 | 5013866034008 | May 01 1995 | April 10 2009To Current | £3.49 |
| 3 | LS18 LOCKSHIELD - DISCONTINUED | 841002 | 5013866058981 | January 01 1990 | April 10 2009 | £0.00 |
| 3 | LS19 LOCKSHIELD | 841101 | 5013866034015 | May 01 1995 | April 10 2009To Current | £3.49 |
| 4 | SL1 PLASTIC SLEEVE (WHITE) | 840111 | 5013866058905 | May 01 1995 | April 10 2009To CurrentTo Current | £0.48 |
| 4 | SL2 PLASTIC SLEEVE (GREY) - DISCONTINUED | 840112 | 5013866058912 | January 01 1990 | April 30 1995 | £0.00 |
| 5 | GP13 GLAND PACKING | 850328 | 5013866060038 | May 01 1995 | April 30 1995To Current | £0.86 |
| 5 | GP13 GLAND PACKING | 850328 | 5013866060038 | January 01 1990 | April 30 1995 | £0.86 |
| 6 | TP1CP CHROME TAIL PIPE | 841006 | 5013866059001 | January 01 1990 | April 30 1995 | £9.85 |
| 6 | TP1CP CHROME TAIL PIPE | 841006 | 5013866059001 | May 01 1995 | April 30 1995To Current | £9.85 |
| 7 | TP2CP CHROME TAIL PIPE | 841008 | 5013866059025 | May 01 1995 | April 30 1995To CurrentTo Current | £12.32 |
| 7 | TP2CP CHROME TAIL PIPE | 841008 | 5013866059025 | January 01 1990 | April 30 1995 | £12.32 |
| 8 | DC5 DUST CAP | 841102 | 5013866059063 | May 01 1995 | April 30 1995To Current | £2.31 |
| 8 | DC3 DUST CAP | 841021 | 5013866059032 | January 01 1990 | April 30 1995 | £6.70 |

CARE & MAINTENANCE

Care

No regular aesthetic care is required for this product

Maintenance

No regular maintenance is required for this product.

For any further help please contact the Service Support Team on: 0800 1560050.

REGULATIONS

Regulations

Terrier manual radiator valves are generally approved to BS2767-10. For valves with compression connections, the connections are approved to BS EN1254-2; threaded connections comply with BS 21 or BS 2779.

They are designed for use only in an indirect open-vented or sealed water-filled central heating and/or indirect hot water system and for no other purpose.

They must be used within the pressure and temperature limits stated in the technical information table below.

| Operating Conditions | Maximum |
|------------------------------------|---------|
| System Water Temperature (at 5bar) | 120 °C |
| Operating pressure (at 65 °C) | 10 bar |

Under no circumstances must they be used in systems containing liquids or solutions other than water. The only exception is the addition of a proprietary central heating corrosion inhibitor, cleaner or anti-freeze to the system water in accordance with the manufacturer's instructions.

Terrier heating controls are manufactured to a strict quality assurance system in accordance with ISO 9000: 2001

GUARANTEE

Thermostatic and Manual Radiator Valves

Pegler Yorkshire Customcare 5 Year Guarantee - Terms & Conditions

Products are subject to a 5 year guarantee that is between Pegler Yorkshire and the final purchaser of the product.

The guarantee is subject to proof of purchase being supplied.

This guarantee does not affect any statutory rights the consumer may have in law.

The guarantee covers manufacturing or material defects and is not applicable where the product is fitted contrary to conditions of use in our literature.

The guarantee is subject to the following limitations:

1. The valves are designed for use only in an indirect open-vented or sealed water-filled central heating and/or indirect hot water system and for no other purpose.
2. They must be used within the pressure and temperature limits stated in the technical information table below.

| |
|---|
| Operating Conditions (Maximum) |
| System Water Temperature (at 5bar) : 120 °C |
| Operating pressure (at 65 oC) :10 bar |

3. Under no circumstances must they be used to in systems containing liquids or solutions other than water. The only exception is the addition of a proprietary central heating corrosion inhibitor, cleaner or anti-freeze to the system water in accordance with the manufacturer's instructions.

4. Damage caused by abusive behaviour and accidental damage to the product are not covered by this guarantee

The extent of Pegler Yorkshire liability is limited to the cost of the replacement of the defective item and not to fitting or consequential damages.

APPROVALS



Kitemarked BS 2767