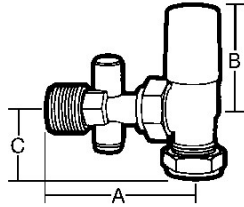


367 DLS Angle Pattern with Drain Off



Lockshield Radiator Valve Angle Pattern with Drain Off for copper

GENERAL INFORMATION

Size	Pattern No.	Box Qty	Code	Barcode	Price (£) ex VAT
8mmx1/2	367 DLS	1	601042	5013866017681	£15.88
10mmx1/2	367 DLS	1	601046	5013866017698	£15.88
15mmx1/2	367 DLS	1	601048	5013866017704	£15.88
8mmx1/2	367 CPDLS	1	601052	5013866017711	£16.83
10mmx1/2	367 CPDLS	10	601056	5013866017728	£16.83
15mmx1/2	367 CPDLS	10	601058	5013866017735	£16.83

DIMENSIONS (mm)

Code	Description	A	B	C
601042	1/2X8MM 367NEW DLS TERRIER ANG RAD VLV	77	52	26
601046	1/2X10MM 367NEW DLS TERRIER ANG RAD VLV	77	52	29
601048	1/2X15MM 367NEW DLS TERRIER ANG RAD VLV	77	52	29
601052	1/2X8MM 367NEW CP DLS TERR ANG RAD VLV	77	52	26
601056	1/2X10MM 367NEW CP DLS TERR ANG RAD VLV	77	52	29
601058	1/2X15MM 367NEW CP DLS TERR ANG RAD VLV	77	52	29

PRESSURE & TEMPERATURE

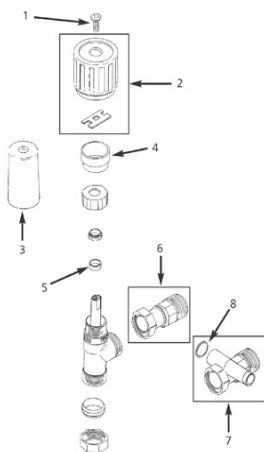
367 DLS Angle Pattern with Drain Off	Minimum Operating Pressure (bar)	Maximum Cold Working Pressure (bar)	Maximum Hot Working Pressure (bar)
1/2X8MM 367NEW DLS TERRIER ANG RAD VLV	No Minimum Operating Pressure	10.0 bar at temperatures up to 120oC	Not Suitable for Maximum Hot Working Pressure

MATERIAL SPECIFICATIONS

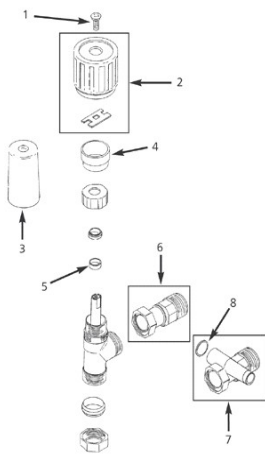
Number	Component	Material
1	Body	Forged Brass (DLS) Forged Brass Chrome Plated (CPDLS)
2	Head	Brass Bar
3	Spindle/Valve	Brass Bar
4	Glandnut/Gland	Brass Bar
5	Adapter	Forged Brass (DLS) Forged Brass Chrome Plated (CPDLS)
6	Capnut	Forged Brass (DLS) Forged Brass Chrome Plated (CPDLS)
7	Cone	Brass
8	Set Screw	Brass
9	Lockshield	Polypropylene

SPARES

367 DLS - Size - 8mmx1/2

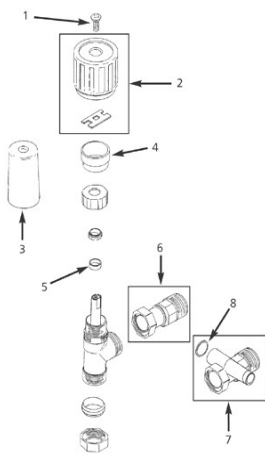


Spare Key	Description	Code	Barcode	Date From	Date To	Price (£) ex VAT
1	S1 BRASS SCREW DISCONTINUED	840026	5013866058837	January 01 1990	April 30 1995	£0.68
1	S4 BRASS SCREW	840110	5013866058899	May 01 1995	April 30 1995To Current	£0.68
2	WH5 WHEELHANDLE	841100	5013866034008	May 01 1995	April 30 1995To CurrentTo Current	£3.49
2	WH4 WHEELHANDLE - DISCONTINUED	841001	5013866058974	January 01 1990	April 10 2009	£0.00
3	LS18 LOCKSHIELD - DISCONTINUED	841002	5013866058981	January 01 1990	April 10 2009	£0.00
3	LS19 LOCKSHIELD	841101	5013866034015	May 01 1995	April 10 2009To Current	£3.49
4	SL1 PLASTIC SLEEVE (WHITE)	840111	5013866058905	May 01 1995	April 10 2009To CurrentTo Current	£0.48
4	SL2 PLASTIC SLEEVE (GREY) - DISCONTINUED	840112	5013866058912	January 01 1990	April 30 1995	£0.00
5	GP13 GLAND PACKING	850328	5013866060038	January 01 1990	April 30 1995	£0.86
5	GP13 GLAND PACKING	850328	5013866060038	May 01 1995	April 30 1995To Current	£0.86
6	TP1 BRASS TAIL PIPE	841003	5013866058998	January 01 1990	April 30 1995	£8.26
6	TP1 BRASS TAIL PIPE	841003	5013866058998	May 01 1995	April 30 1995To Current	£8.26
7	TP2 BRASS TAIL PIPE	841007	5013866059018	January 01 1990	April 30 1995	£10.27
7	TP2 BRASS TAIL PIPE	841007	5013866059018	May 01 1995	April 30 1995To Current	£10.27
8	DC3 DUST CAP	841021	5013866059032	January 01 1990	April 30 1995	£6.70
8	DC5 DUST CAP	841102	5013866059063	May 01 1995	April 30 1995To Current	£2.31



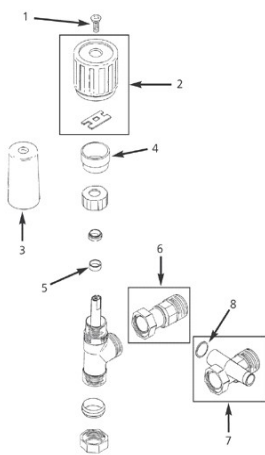
367 DLS - Size - 10mmx1/2

Spare Key	Description	Code	Barcode	Date From	Date To	Price (£) ex VAT
1	S1 BRASS SCREW DISCONTINUED	840026	5013866058837	January 01 1990	April 30 1995	£0.68
1	S4 BRASS SCREW	840110	5013866058899	May 01 1995	April 30 1995To Current	£0.68
2	WH4 WHEELHANDLE - DISCONTINUED	841001	5013866058974	January 01 1990	April 10 2009	£0.00
2	WH5 WHEELHANDLE	841100	5013866034008	May 01 1995	April 10 2009To Current	£3.49
3	LS19 LOCKSHIELD	841101	5013866034015	May 01 1995	April 10 2009To Current	£3.49
3	LS18 LOCKSHIELD - DISCONTINUED	841002	5013866058981	January 01 1990	April 10 2009	£0.00
4	SL2 PLASTIC SLEEVE (GREY) - DISCONTINUED	840112	5013866058912	January 01 1990	April 30 1995	£0.00
4	SL1 PLASTIC SLEEVE (WHITE)	840111	5013866058905	May 01 1995	April 30 1995To Current	£0.48
5	GP13 GLAND PACKING	850328	5013866060038	January 01 1990	April 30 1995	£0.86
5	GP13 GLAND PACKING	850328	5013866060038	May 01 1995	April 30 1995To Current	£0.86
6	TP1 BRASS TAIL PIPE	841003	5013866058998	May 01 1995	April 30 1995To Current	£8.26
6	TP1 BRASS TAIL PIPE	841003	5013866058998	January 01 1990	April 30 1995	£8.26
7	TP2 BRASS TAIL PIPE	841007	5013866059018	January 01 1990	April 30 1995	£10.27
7	TP2 BRASS TAIL PIPE	841007	5013866059018	May 01 1995	April 30 1995To Current	£10.27
8	DC5 DUST CAP	841102	5013866059063	May 01 1995	April 30 1995To Current	£2.31
8	DC3 DUST CAP	841021	5013866059032	January 01 1990	April 30 1995	£6.70



367 DLS - Size - 15mmx1/2

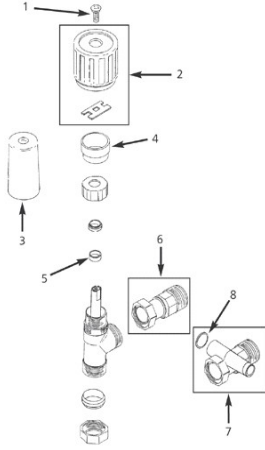
Spare Key	Description	Code	Barcode	Date From	Date To	Price (£) ex VAT
1	S1 BRASS SCREW DISCONTINUED	840026	5013866058837	January 01 1990	April 30 1995	£0.68
1	S4 BRASS SCREW	840110	5013866058899	May 01 1995	April 30 1995To Current	£0.68
2	WH5 WHEELHANDLE	841100	5013866034008	May 01 1995	April 30 1995To Current	£3.49
2	WH4 WHEELHANDLE - DISCONTINUED	841001	5013866058974	January 01 1990	April 10 2009	£0.00
3	LS19 LOCKSHIELD	841101	5013866034015	May 01 1995	April 10 2009To Current	£3.49
3	LS18 LOCKSHIELD - DISCONTINUED	841002	5013866058981	January 01 1990	April 10 2009	£0.00
4	SL1 PLASTIC SLEEVE (WHITE)	840111	5013866058905	May 01 1995	April 10 2009To Current	£0.48
4	SL2 PLASTIC SLEEVE (GREY) - DISCONTINUED	840112	5013866058912	January 01 1990	April 30 1995	£0.00
5	GP13 GLAND PACKING	850328	5013866060038	May 01 1995	April 30 1995To Current	£0.86
5	GP13 GLAND PACKING	850328	5013866060038	January 01 1990	April 30 1995	£0.86
6	TP1 BRASS TAIL PIPE	841003	5013866058998	May 01 1995	April 30 1995To Current	£8.26
6	TP1 BRASS TAIL PIPE	841003	5013866058998	January 01 1990	April 30 1995	£8.26
7	TP2 BRASS TAIL PIPE	841007	5013866059018	May 01 1995	April 30 1995To Current	£10.27
7	TP2 BRASS TAIL PIPE	841007	5013866059018	January 01 1990	April 30 1995	£10.27
8	DC5 DUST CAP	841102	5013866059063	May 01 1995	April 30 1995To Current	£2.31
8	DC3 DUST CAP	841021	5013866059032	January 01 1990	April 30 1995	£6.70



367 CPDLS - Size - 8mmx1/2

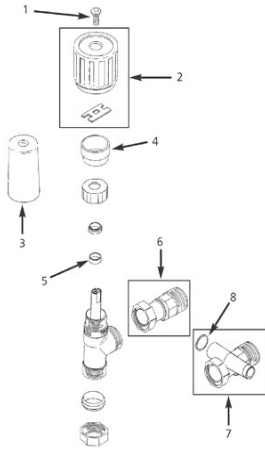
Spare Key	Description	Code	Barcode	Date From	Date To	Price (£) ex VAT
1	S4CP CHROME SCREW	840109	5013866058882	May 01 1995	To Current	£0.78
1	S1CP CHROME SCREW	840025	5013866058820	January 01 1990	April 30 1995	£0.78
2	WH5 WHEELHANDLE	841100	5013866034008	May 01 1995	April 30 1995To Current	£3.49
2	WH4 WHEELHANDLE - DISCONTINUED	841001	5013866058974	January 01 1990	April 10 2009	£0.00
3	LS18 LOCKSHIELD - DISCONTINUED	841002	5013866058981	January 01 1990	April 10 2009	£0.00
3	LS19 LOCKSHIELD	841101	5013866034015	May 01 1995	April 10 2009To Current	£3.49
4	SL1 PLASTIC SLEEVE (WHITE)	840111	5013866058905	May 01 1995	April 10 2009To Current	£0.48
4	SL2 PLASTIC SLEEVE (GREY) - DISCONTINUED	840112	5013866058912	January 01 1990	April 30 1995	£0.00
5	GP13 GLAND PACKING	850328	5013866060038	January 01 1990	April 30 1995	£0.86

				1990		
5	GP13 GLAND PACKING	850328	5013866060038	May 01 1995	April 30 1995To Current	£0.86
6	TP1CP CHROME TAIL PIPE	841006	5013866059001	May 01 1995	April 30 1995To CurrentTo Current	£9.85
6	TP1CP CHROME TAIL PIPE	841006	5013866059001	January 01 1990	April 30 1995	£9.85
7	TP2CP CHROME TAIL PIPE	841008	5013866059025	May 01 1995	April 30 1995To Current	£12.32
7	TP2CP CHROME TAIL PIPE	841008	5013866059025	January 01 1990	April 30 1995	£12.32
8	DC3 DUST CAP	841021	5013866059032	January 01 1990	April 30 1995	£6.70
8	DC5 DUST CAP	841102	5013866059063	May 01 1995	April 30 1995To Current	£2.31



367 CPDLS - Size - 10mmx1/2

Spare Key	Description	Code	Barcode	Date From	Date To	Price (£) ex VAT
1	S4CP CHROME SCREW	840109	5013866058882	May 01 1995	To Current	£0.78
1	S1CP CHROME SCREW	840025	5013866058820	January 01 1990	April 30 1995	£0.78
2	WH4 WHEELHANDLE - DISCONTINUED	841001	5013866058974	January 01 1990	April 10 2009	£0.00
2	WH5 WHEELHANDLE	841100	5013866034008	May 01 1995	April 10 2009To Current	£3.49
3	LS19 LOCKSHIELD	841101	5013866034015	May 01 1995	April 10 2009To CurrentTo Current	£3.49
3	LS18 LOCKSHIELD - DISCONTINUED	841002	5013866058981	January 01 1990	April 10 2009	£0.00
4	SL2 PLASTIC SLEEVE (GREY) - DISCONTINUED	840112	5013866058912	January 01 1990	April 30 1995	£0.00
4	SL1 PLASTIC SLEEVE (WHITE)	840111	5013866058905	May 01 1995	April 30 1995To Current	£0.48
5	GP13 GLAND PACKING	850328	5013866060038	January 01 1990	April 30 1995	£0.86
5	GP13 GLAND PACKING	850328	5013866060038	May 01 1995	April 30 1995To Current	£0.86
6	TP1CP CHROME TAIL PIPE	841006	5013866059001	May 01 1995	April 30 1995To CurrentTo Current	£9.85
6	TP1CP CHROME TAIL PIPE	841006	5013866059001	January 01 1990	April 30 1995	£9.85
7	TP2CP CHROME TAIL PIPE	841008	5013866059025	January 01 1990	April 30 1995	£12.32
7	TP2CP CHROME TAIL PIPE	841008	5013866059025	May 01 1995	April 30 1995To Current	£12.32
8	DC3 DUST CAP	841021	5013866059032	January 01 1990	April 30 1995	£6.70
8	DC5 DUST CAP	841102	5013866059063	May 01 1995	April 30 1995To Current	£2.31



367 CPDLS - Size - 15mmx1/2

Spare Key	Description	Code	Barcode	Date From	Date To	Price (£) ex VAT
1	S1CP CHROME SCREW	840025	5013866058820	January 01 1990	April 30 1995	£0.78
1	S4CP CHROME SCREW	840109	5013866058882	May 01 1995	April 30 1995To Current	£0.78
2	WH5 WHEELHANDLE	841100	5013866034008	May 01 1995	April 30 1995To CurrentTo Current	£3.49
2	WH4 WHEELHANDLE - DISCONTINUED	841001	5013866058974	January 01 1990	April 10 2009	£0.00
3	LS18 LOCKSHIELD - DISCONTINUED	841002	5013866058981	January 01 1990	April 10 2009	£0.00
3	LS19 LOCKSHIELD	841101	5013866034015	May 01 1995	April 10 2009To Current	£3.49
4	SL2 PLASTIC SLEEVE (GREY) - DISCONTINUED	840112	5013866058912	January 01 1990	April 30 1995	£0.00
4	SL1 PLASTIC SLEEVE (WHITE)	840111	5013866058905	May 01 1995	April 30 1995To Current	£0.48
5	GP13 GLAND PACKING	850328	5013866060038	May 01 1995	April 30 1995To CurrentTo Current	£0.86
5	GP13 GLAND PACKING	850328	5013866060038	January 01 1990	April 30 1995	£0.86
6	TP1CP CHROME TAIL PIPE	841006	5013866059001	January 01 1990	April 30 1995	£9.85
6	TP1CP CHROME TAIL PIPE	841006	5013866059001	May 01 1995	April 30 1995To Current	£9.85
7	TP2CP CHROME TAIL PIPE	841008	5013866059025	May 01 1995	April 30 1995To CurrentTo Current	£12.32
7	TP2CP CHROME TAIL PIPE	841008	5013866059025	January 01 1990	April 30 1995	£12.32
8	DC5 DUST CAP	841102	5013866059063	May 01 1995	April 30 1995To Current	£2.31
8	DC3 DUST CAP	841021	5013866059032	January 01 1990	April 30 1995	£6.70

CARE & MAINTENANCE

Care

No regular aesthetic care is required for this product

Maintenance

No regular maintenance is required for this product.

For any further help please contact the Service Support Team on: 0800 1560050.

REGULATIONS

Regulations

Terrier manual radiator valves are generally approved to BS2767-10. For valves with compression connections, the connections are approved to BS EN1254-2; threaded connections comply with BS 21 or BS 2779.

They are designed for use only in an indirect open-vented or sealed water-filled central heating and/or indirect hot water system and for no other purpose.

They must be used within the pressure and temperature limits stated in the technical information table below.

Operating Conditions	Maximum
System Water Temperature (at 5bar)	120°C
Operating pressure (at 65°C)	10 bar

Under no circumstances must they be used in systems containing liquids or solutions other than water. The only exception is the addition of a proprietary central heating corrosion inhibitor, cleaner or anti-freeze to the system water in accordance with the manufacturer's instructions.

Terrier heating controls are manufactured to a strict quality assurance system in accordance with ISO 9000: 2001

GUARANTEE

Thermostatic and Manual Radiator Valves

Pegler Yorkshire Customcare 5 Year Guarantee - Terms & Conditions

Products are subject to a 5 year guarantee that is between Pegler Yorkshire and the final purchaser of the product.

The guarantee is subject to proof of purchase being supplied.

This guarantee does not affect any statutory rights the consumer may have in law.

The guarantee covers manufacturing or material defects and is not applicable where the product is fitted contrary to conditions of use in our literature.

The guarantee is subject to the following limitations:

1. The valves are designed for use only in an indirect open-vented or sealed water-filled central heating and/or indirect hot water system and for no other purpose.
2. They must be used within the pressure and temperature limits stated in the technical information table below.

Operating Conditions (Maximum)
System Water Temperature (at 5bar) : 120 °C
Operating pressure (at 65 oC) :10 bar

3. Under no circumstances must they be used to in systems containing liquids or solutions other than water. The only exception is the addition of a proprietary central heating corrosion inhibitor, cleaner or anti-freeze to the system water in accordance with the manufacturer's instructions.

4. Damage caused by abusive behaviour and accidental damage to the product are not covered by this guarantee

The extent of Pegler Yorkshire liability is limited to the cost of the replacement of the defective item and not to fitting or consequential damages.

APPROVALS



Kitemarked BS 2767