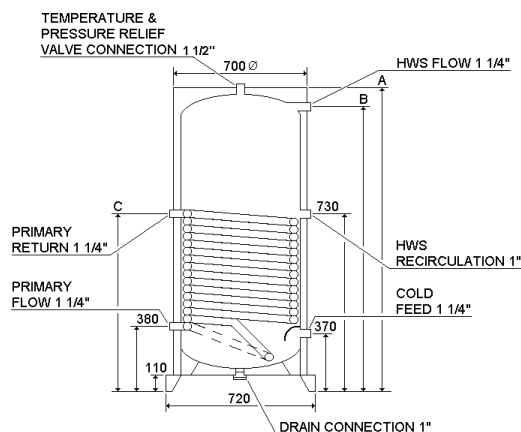
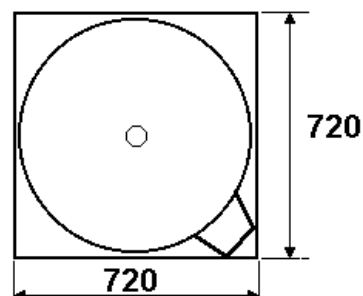


Technical Data



Top View



KEY

Dimension	ATI CC 300	ATI CC 400	ATI CC 500
A	1350	1700	2050
B	1330	1580	1930
C	980	1180	1180

The heating coil is glass lined, which increases the performance producing large quantities of hot water and gives the unit self cleaning capability thereby maintaining high performance throughout its life.

All the internal surfaces in contact with domestic hot water are treated with an opal-glassed process at 860°C. This process covers the surfaces with a vitreous enamel coating that penetrates the metal preventing oxidation and chemical corrosion of the unit.

The enamel coating also prevents lime-scale build up, thus eliminating hygiene and bacteria problems associated with normal hot water systems.

The STREBEL ATI CC unit is an indirect hot water calorifier that incorporates innovative technical solutions.

MODELS		ATI CC 300	ATI CC 400	ATI C 500
Storage	Litres	295	390	488
Maximum Thermal Absorption	kW	59.50	73.85	73.85
Hot water output at:				
45°C	Ltr/hr	1100	1400	1400
60°C	Ltr/hr	850	1050	1050
Recovery time:				
10 to 45°C	Mins	17	19	23
10 to 60°C	Mins	23	25	31
Maximum Heating coil pressure	bar	10	10	10
Maximum cylinder pressure	bar	6	6	6
Maximum hot water temperature	°C	95	95	95
Surface area of heating coil	m ²	2.1	2.6	2.6
Maximum Heating coil temperature	°C	110	110	110
Primary Flow rate	m ³ /h	4.25	6.1	6.1
Primary coil hydraulic resistance	Kpa	11.5	16	16
Secondary hydraulic resistance	Kpa	0.5	0.5	0.5
Primary Flow connection	inch BSP	1 1/4	1 1/4	1 1/4
Primary Return connection	inch BSP	1 1/4	1 1/4	1 1/4
HWS Outlet connection	inch BSP	1 1/4	1 1/4	1 1/4
HWS Secondary circulation	inch BSP	1	1	1
Cold feed connection	inch BSP	1 1/4	1 1/4	1 1/4
Drain Connection	inch BSP	1	1	1
Dry Weight	Kg	200	240	280
Filled Weight	Kg	495	630	768

The hot water figures are valid at a primary flow temperature 80°C and at a cold feed temperature 10°C.

The company reserves the right to change the specification and dimensions without prior notice

STREBEL LTD

1F Albany Park Industrial Estate
 Frimley Road, Camberley
 Surrey GU16 7PB
 Telephone: (01276 685422) Fax: (01276 685405)
 E-mail address: info@strebel.co.uk
 Website: www.strebel.co.uk