

STOKVIS

ENERGY SYSTEMS



ECONOFLAME R30
WALL MOUNTED GAS FIRED BOILERS

ECONOFLAME R30 SERIES

High Efficiency - Fully Condensing - Ultra Low NO_x

Wall Mounted Gas Fired Boilers

The Econoflame R30 Series offers a range of four, high efficiency, fully modulating, fully condensing, ultra low NO_x, extremely compact, WALL MOUNTED, gas fired boilers. These innovative boilers offer the highest efficiencies with the lowest environmental impact.

MAXIMUM INNOVATION

The R30 Series once again boasts the 'ultimate' in heating technology - a phenomenon for which Stokvis has become renowned in the UK and the rest of Europe since the 1980's.

The boilers are manufactured with stainless steel heat exchangers, plus a pre-mix, ultra low NO_x burner guaranteeing minimum NO_x, CO and CO₂ emissions - giving maximum efficiencies.

PROVEN QUALITY

With a proven 'Econoflame' track record for quality, covering decades, the R30 has a great pedigree. The R30 is very user friendly and requires minimum maintenance.

The boiler comes fully assembled and is simplicity itself to install and operate.

These top quality, whisper quiet, products are manufactured from recyclable components.



- **Capacities of 45, 65, 85, 100, and 120 kW**

- **Fully Condensing**

- **High Efficiencies > 109.5%**

- **Fully Modulating 13% to 100%**

- **Latest Generation Control Technology**

- **Whisper Quiet <48dBa**

- **Very Compact**

- **Pump Integral *except R30/100, R30/120**

- **Engineer Friendly**

- **User Friendly**

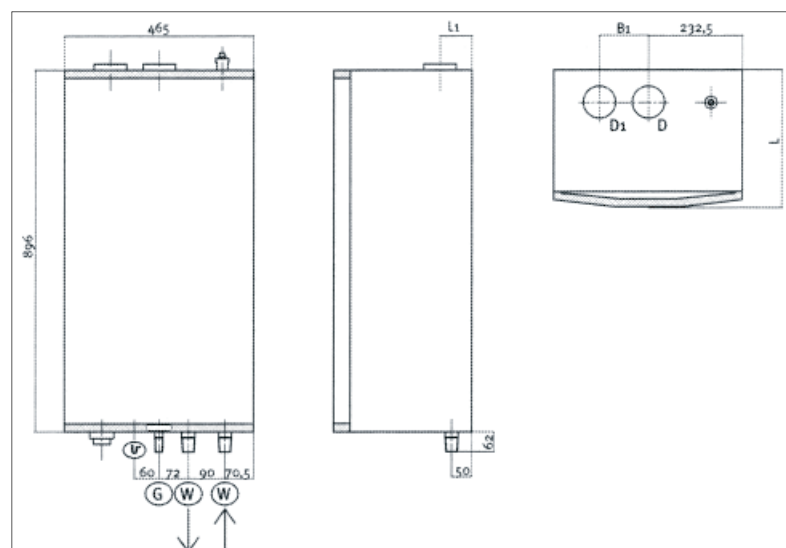
- **SEDBUK A Rated**

R30

Technical Specifications R30

Type		R30/45	R30/65	R30/85	R30/100	R30/120
Nominal heat input H _{gcv}	kW	6.7 - 44.4	9.5 - 67.4	17.7 - 88.8	19.9 - 99.9	25.0 - 124.8
Nominal heat input H _{ncv}	kW	5.8 - 40.0	8.6 - 60.7	16.0 - 80.0	18.0 - 90.0	22.5 - 112.4
Nominal heat output (80/60°C)	kW	5.6 - 39.2	8.3 - 59.2	15.6 - 77.8	17.6 - 88.2	21.9 - 109.8
Nominal heat output (40/30°C)	kW	6.3 - 43.0	9.2 - 65.0	17.0 - 85.0	19.2 - 96.3	21.9 - 109.8
Gas consumption						
natural gas H (10.9 kWh/m ³)	m ³ /h	0.5 - 3.7	0.8 - 5.6	1.4 - 7.3	1.6 - 8.2	2.1 - 10.3
propane (12.8 kWh/kg)	kg/h	0.2 - 1.6	0.3 - 2.5	0.6 - 3.3	0.7 - 3.6	0.9 - 4.6
Gas inlet pressure						
natural gas H	mbar	17 - 20	17 - 20	17 - 20	17 - 20	17 - 20
propane	mbar	30 - 50	30 - 50	30 - 50	30 - 50	30 - 50
Water Capacity	litre	5.1	6.6	8.4	10.3	12
Max. working pressure	bar	6	6	6	6	6
Flue connection	D	mm	80	80	100	100
Air supply	D ₁	mm	80	80	100	100
Gas connection	G		R ³ / ₄ "	R ³ / ₄ "	R ³ / ₄ "	R ³ / ₄ "
Water connections (ext/int)	W		R1 ¹ / ₄ "/Rp1"	R1 ¹ / ₄ "/Rp1"	R1 ¹ / ₄ "/Rp1"	R1 ¹ / ₄ "/Rp1"
Condensate connection (Ø _{external})	mm	25	25	25	25	25
Power supply (1 phase)	V	230	230	230	230	230
Frequency	Hz	50	50	50	50	50
Fuse	A	6	6	6	6	6
Max. electrical power consumption (excl.pump)	VA	97	98	123	130	215
Max. electrical power consumption (incl. pump)	VA	190	230	255	325	410
Protection rating	IP	30	30	30	30	30
Dimensions						
height	mm	896	896	896	896	896
width	mm	465	465	465	465	465
B ₁	mm	120	140	140	140	140
depth L	mm	340	405	510	560	670
L ₁	mm	74	90	90	90	90
Boiler weight, empty, ± 5%	kg	45	55	65	80	90

(Changes can be made without any prior notice)



STOKVIS

ENERGY SYSTEMS



STOKVIS

ENERGY SYSTEMS

STOKVIS INDUSTRIAL BOILERS
(INTERNATIONAL) LIMITED
96R Walton Road East Molesey Surrey KT8 0DL
TELEPHONE 08707 707747 • FACSIMILE 08707 707767
Email: info@stokvisboilers.com • Website: <http://www.stokvisboilers.com>