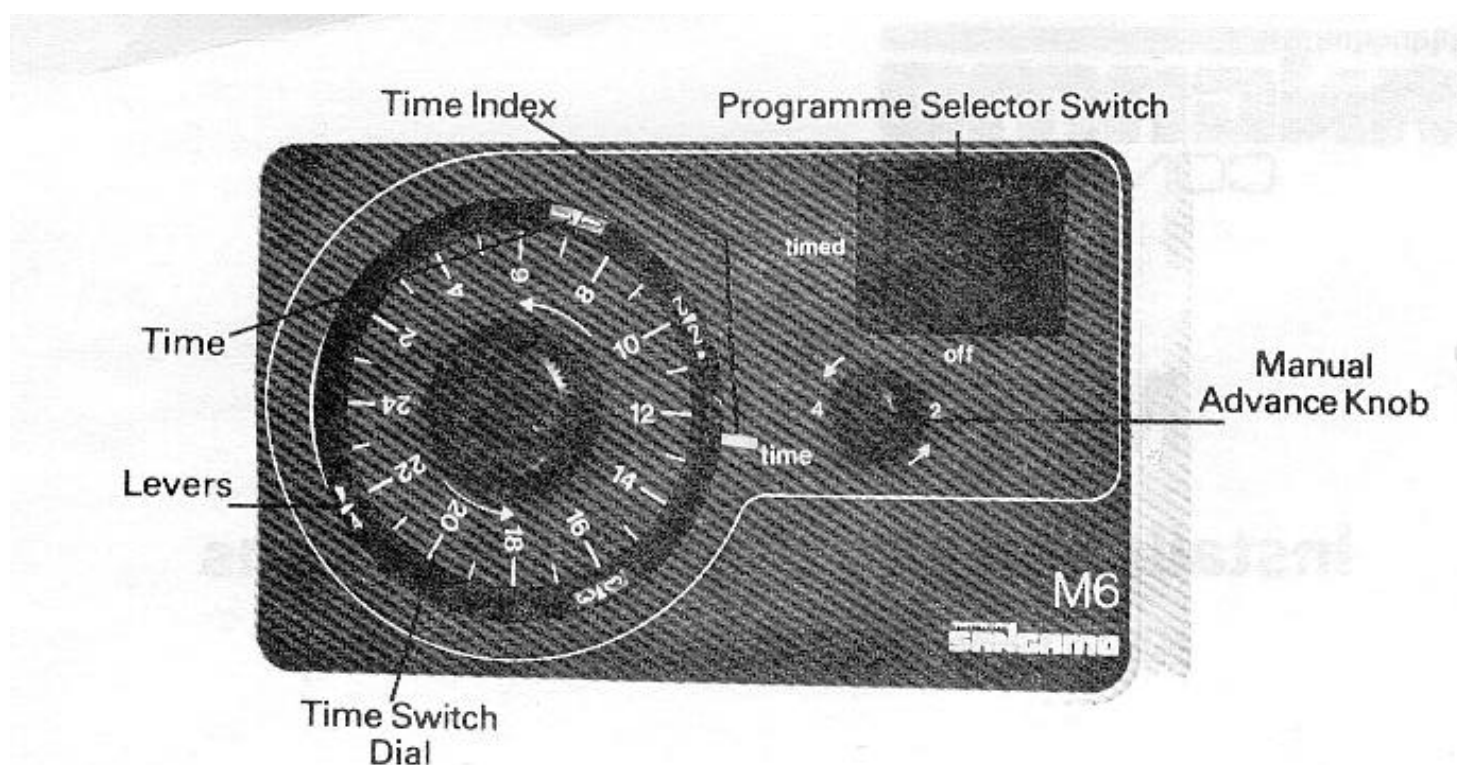


M6 Programmer

Installation and User's Instructions

To be left with the householder



This product is guaranteed by your supplier for 1 year. Should it become defective please contact your supplier.

Time Switch

The easy-to-read 24-hour dial is marked every hour and fitted with two 'on' and two 'off' levers. The 'on' levers, numbered 1 and 3 are red and the 'off' levers, numbered 2 and 4 are black. These numbers correspond to the numbers around the ADVANCE control knob.

To set the time levers, push each one in and slide it either clockwise or anti-clockwise to the appropriate time. After setting the levers turn the time switch dial anti-clockwise for one complete turn and then continue turning it until the time of day is in line with the time index.

Programme Selector Switch

This switch gives you a choice of switching operations.

- Timed — all time levers are effective so there are 2 on/off operations per day (unless the ADVANCE knob is used).
- ON — time levers non-effective (i.e. continuously 'on').
- OFF — time levers non-effective (i.e. continuously 'off').

Advance Knob

The ADVANCE knob indicates the number of the last time lever to pass the time index. If you wish to advance any operation you should :- Turn the ADVANCE knob until it indicates the number of the time lever whose operation you wish to anticipate

Assuming the time levers are set thus :-

Lever 1 ('ON') at 6 (6am)
Lever 2 ('OFF') at 8 (8am)
Lever 3 ('ON') at 17 (5pm)
Lever 4 ('OFF') at 22 (10pm)

The following examples will demonstrate the facilities provided by the Advance Knob without any cause to move levers or Time Switch Dial.

Example 1:- If after 6am you wish heating/hot water to switch off before 8am turn the knob which will be indicating 1 to indicate 2. This will immediately anticipate the action of lever 2 ('OFF') and the circuit will be 'off' and remain 'off' until lever 3 ('ON') passes the time index at 5pm.

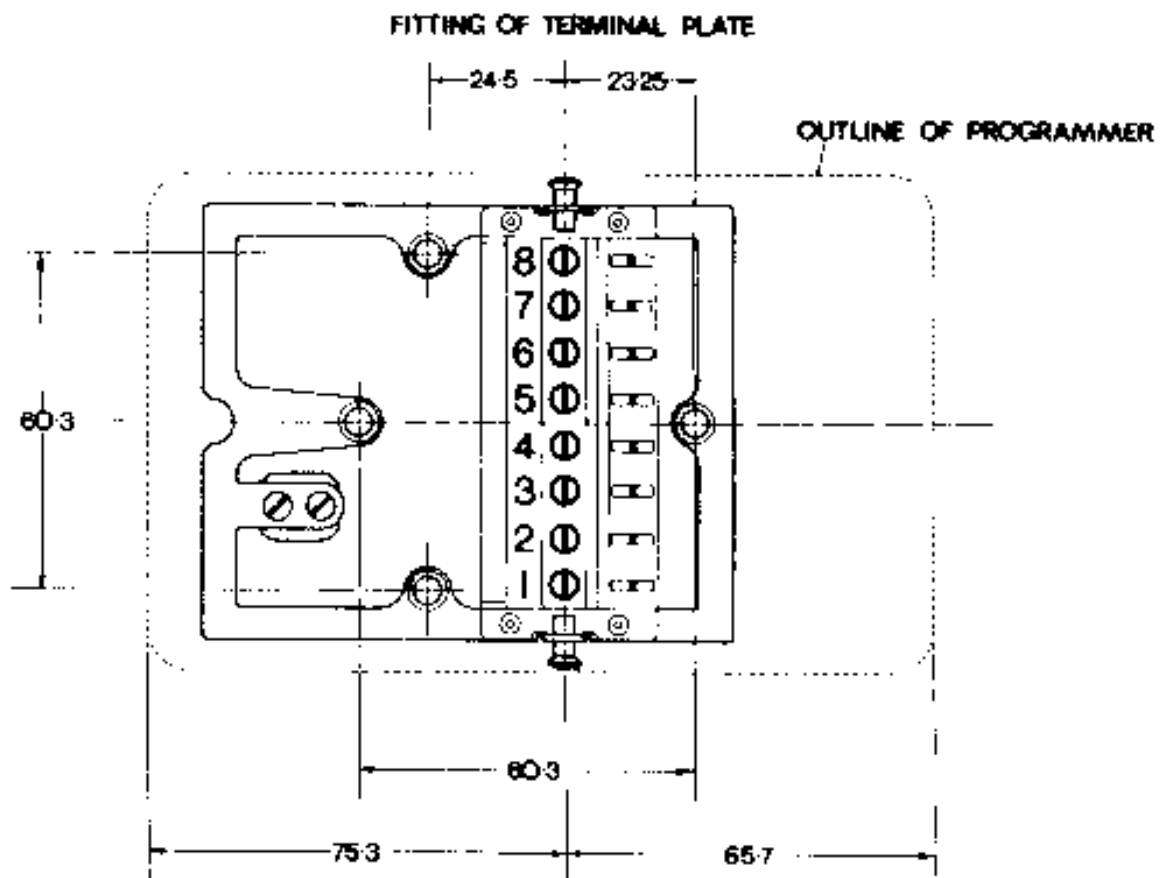
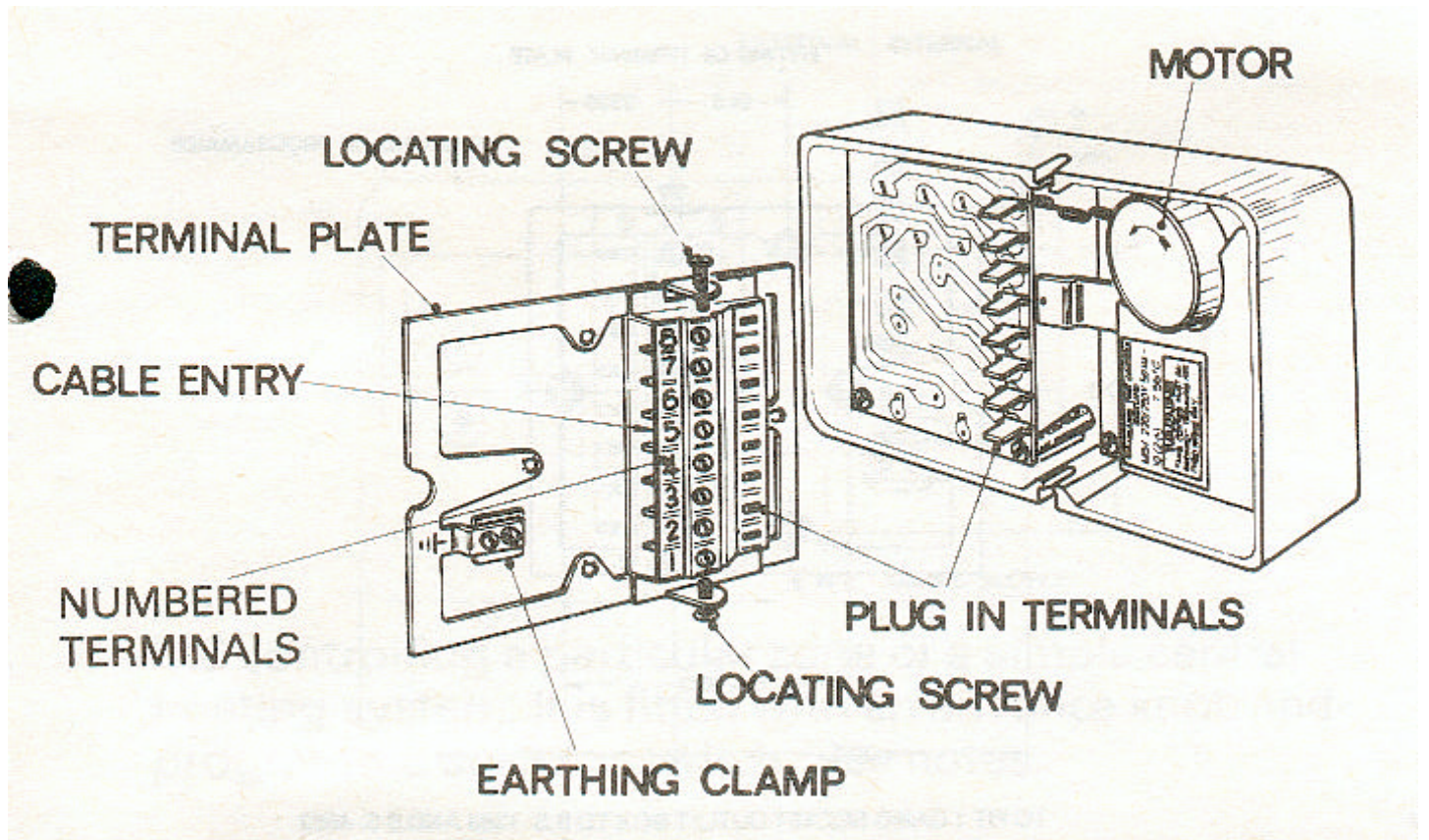
Example 2:- If after 8am you do not require heating/hot water until the following morning (i.e. you wish to omit the evening operation) turn the knob which will be indicating 2 to indicate 4. This will immediately anticipate the action of lever 4 ('OFF') and the circuit already at 'off' will remain 'off' until lever 1 ('ON') passes the time index at 6am the following morning.

Example 3:- If heating/hot water is required after 10pm turn the knob which will be indicating 4 to indicate 1. The circuit will come 'on' and would remain 'on' until lever 2 ('OFF') passes the time index at 8am the following morning. To avoid unnecessary waste of electricity it must be remembered to turn the knob to indicate 4 as soon as heating/hot water is no longer required. This will switch the heating/hot water off and allow the Programmer to continue with its set programme.

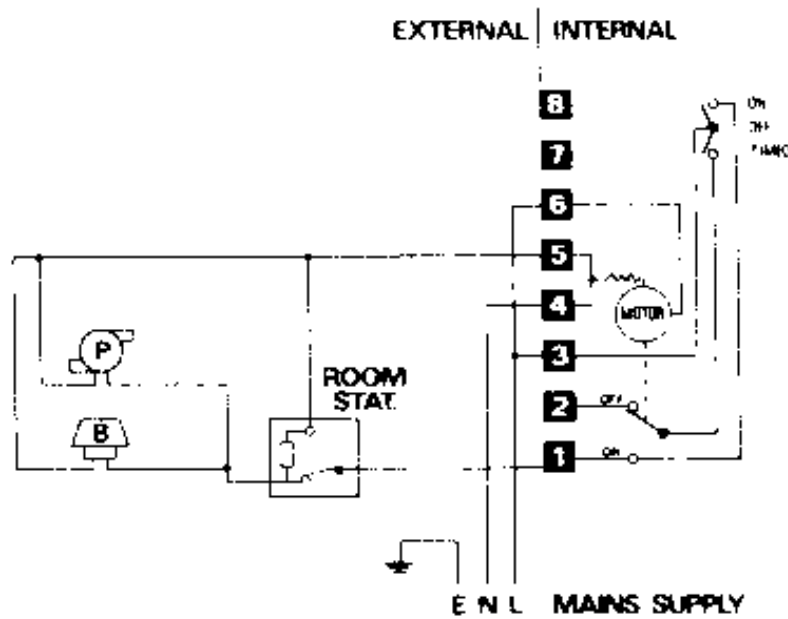
5

Installation and Wiring Instructions

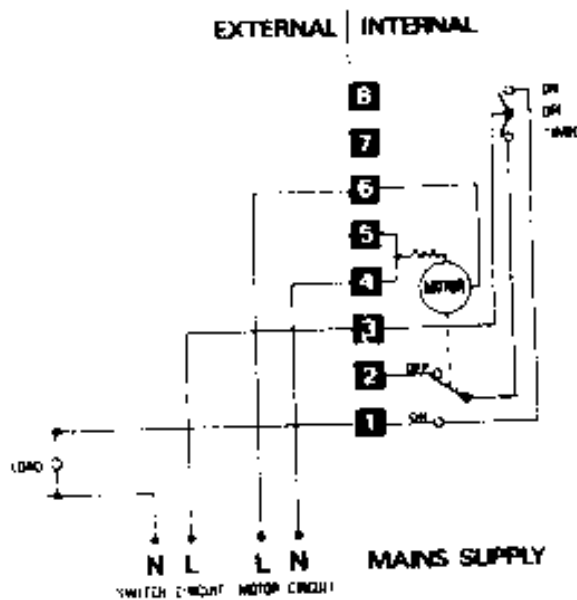
1. Loosen the two locating screws (fig 1).
2. Pull the terminal plate from the rear of the programmer.
3. Secure the plate firmly in position to a conduit box using the screws provided, or to any flat vertical surface free from condensation, using either countersunk machine screws or countersunk No. 6 wood screws. For conduit box fixing, pass the cable through the centre of the terminal plate. When mounted other than on a conduit box, a cable 'knock out' is provided on the underside of the case, to facilitate cable entry.
4. Strip back insulation by 8mm (5/16 ins.) from ends of wires so that satisfactory connection with the terminals may be made.
5. When all electrical connections are made, plug the programmer into the terminal plate, ensuring that the external wiring is not trapped under the motor.
6. Tighten the two locating screws.



TO FIT 1 GANG SOCKET OUTLET BOX TO B.S. 1363 AND B.S. 4662



M6 controlling a particular zone or a simple central heating system. It is fitted with an advance knob and programme selector switch. See notes.



M6 used as a simple time switch

Voltage rating:	As shown on identification label of switch
Contact rating:	10A resistive load 2.5A inductive load
Exposure of live parts:	Enclosed
Moisture protection:	Ordinary
Dirt protection:	Normal situations
Shock protection:	Class 1
Ambient temperature range:	0°C. to 55°C.

Important

Although every care is taken to ensure the accuracy of the electrical system circuit diagrams shown, they are intended for guidance only. Sangamo Controls or associated companies cannot be held responsible or liable for the circuit connections other than those directly associated with the programmer. **ELECTRICAL CONNECTIONS** It is essential that programmers be installed by a qualified electrician.

WARNING Programmers must be earthed. Terminals are for fixed wiring only. Provision for Class A disconnection of the supply must be made in the fixed wiring.

An installation manual is available to qualified installers on request.

SCHLUMBERGER
INDUSTRIAL ESTATE
RENFREWSHIRE
PA14 5XG

TEL: 01475 745131

TEL: 01475 744567

Email: marketing@port-glasgow.rms.slb.com

Web: www.sangamo.co.uk