

PARAGON SIESTA Plus

Manual Control

OWNER'S MANUAL

**INCLUDES USER, INSTALLATION & MAINTENANCE
INSTRUCTIONS**

**Please read these instructions carefully before you start
using the appliance**

Keep this booklet handy for future reference

**This appliance is
for use in GREAT BRITAIN or
IRELAND only**

A QUALITY PRODUCT FROM PARAGON FIRES

**PARAGON FIRES
TELFORD
SHROPSHIRE
TF7 4QJ**

PARAGON SIESTA Plus Owner's Manual

CONTENTS

PAGE

USERS INSTRUCTIONS

SECTION ONE Important Information	3
Important Information.....	3
Introduction.....	4
SECTION TWO Operating the Appliance	4
SECTION THREE Fuel Bed Layout	5
Coal Fuel Bed.....	5
Pebble Fuel Bed.....	6
SECTION FOUR Cleaning	6
Cleaning Decorative Trim.....	6
Fuel Bed parts.....	7
SECTION FIVE General Points	7

INSTALLATION INSTRUCTIONS

SECTION SIX Appliance Data	8
SECTION SEVEN Regulations & Warnings	8
SECTION EIGHT Siting the Appliance	9
Class One.....	9
Class Two Pre-cast.....	10
Class Two Fabricated Metal.....	10
Clearance to Shelf or Surround.....	11
Clearances at Side of Fire.....	11
SECTION NINE To Install the Appliance	11
Checking the Flue and Fire Opening.....	11
Connecting the Gas Supply.....	11
Concealed gas connection (from the rear).....	11
Visible gas connection.....	12
Fixing Back Plate to Fire Opening.....	12
Gas Soundness Test.....	13
Check Burner Pressure and General Operation.....	13
Fuel bed Lay out.....	13
SECTION TEN Checking Operation of Fire	14
Checking Product Clearance.....	14
Advise Customer.....	14

MAINTENANCE INSTRUCTIONS

SECTION ELEVEN Maintenance	15
Replacement of Gas Control.....	15
Replacement of Injector.....	15
Replacement of Silencer.....	16
Replacement of Oxy-Pilot Assembly.....	16
Guarantee / Appliance Information.....	17

SECTION ONE Important Information

Consumer Protection Information

As manufacturers and suppliers of heating products, we take every care, as far as is reasonably practicable, that these products are so designed and constructed as to meet the general safety requirement when properly used and installed. To this end, our products are thoroughly tested and examined before despatch.

IMPORTANT NOTICE: Any alteration that is not approved by the appliance manufacturer could invalidate the approval of the appliance, operation of the warranty and could affect your statutory rights.

Health and Safety Notice

Important

This appliance could contain some of the materials, indicated below, that could be interpreted as being injurious to health and safety. It is the users / installers responsibility to ensure that the necessary personal protective clothing is worn when handling these materials, see below for information.

Artificial Fuels, Mineral Wool, Insulation Material, Refractory/Ceramic Fibres, Glass Yarn - *may be harmful if inhaled, may be irritating to skin, eyes, nose and throat.*

When handling *avoid inhaling and contact with skin or eyes. Use disposable gloves, facemasks and eye protection. After handling wash hands and other exposed parts. If a vacuum is used for cleaning the coals or cleaning after servicing / installation it is recommended that it be of the type fitted with a HEPA filter.*

Disposal of refractory/ceramic materials. To keep dust to a minimum these materials should be securely wrapped in polythene and be clearly labelled 'RCF waste'. These materials are not classified as 'hazardous waste and should be disposed of at a site licensed for the disposal of industrial waste.

- The PARAGON SIESTA PLUS is a decorative fuel effect appliance with a radiant heat conserver box for improved efficiency.
- It is operated by a manual control.
- The PARAGON SIESTA PLUS is designed and tested to the requirements of the EN 509.
- The appliance is for use on Natural Gas only.
- The chimney or flue (unless new or previously used with a gas appliance) must be swept before installation if it has been used for solid fuel.

WARNING

This appliance has a naked flame, as with all such fires it is recommended that a fireguard should be used for the protection of children, the elderly and infirm. Fireguards should conform to BS 6539 (1984) (Fireguards for use with solid fuel appliances).

INTRODUCTION

The PARAGON SLIMLINE 3 incorporates a single gas control, which selects ignition pilot, low or high settings. It is operated via a control knob located behind the ash pan cover.

The appliance incorporates a safety device in the form of an Oxygen Depletion System, which constantly monitors the oxygen in the room and will cause the fire to switch off if the oxygen level reduces, for instance due to insufficient ventilation or a blocked flue.

If this regularly occurs do not attempt to relight the appliance until a qualified engineer has checked it, the problem may not be due to lack of air or a defective flue.

The pilot can be left on or the pilot can be extinguished and relit each time the fire is used.

SECTION ONE Important Information Continued








In GB, the appliance must be installed by a competent person i.e. CORGI-registered, in accordance with the GAS SAFETY (INSTALLATION AND USE) REGULATIONS, The Building Regulations (or The Building Regulations (Scotland) or The Building Regulations (Northern Ireland)) and The Current I.E.E. Wiring Regulations, if appropriate.

In IE, the appliance must be installed by a competent person and installed in accordance with the current edition of I.S.813 Domestic Gas Installation, the current Building Regulations and the current ETCI rules for electrical installation, if appropriate.

SECTION TWO Operating the Appliance

The appliance Control Knob is positioned centrally behind the ash pan cover.

The full lighting procedure for the appliance is as follows: -

- a. Remove ash pan cover.
- b. Push knob in as far as possible on gas control.
- c. Turn knob anti-clockwise until a click is heard. The knob will stop at the position marked  and a flash should be seen at the left-hand side of the burner. At the same time the pilot flame should light. KEEP THE KNOB PRESSED IN FOR 20 SECONDS. Should the pilot fail to light, turn the control knob clockwise to the  position, and repeat the procedure.
- d. After lighting the pilot flame the control knob should be allowed to spring out slightly. This will allow you to turn the knob further anti-clockwise to the position marked . The pilot flame should then ignite the main burner.
- e. It is possible to adjust the height of the flames by turning the control knob between the positions marked  and . Note that the knob 'latches' in position at either end of this movement and must be pushed in slightly before it can be turned.
- f. To turn the burner off, depress the knob slightly and turn it to the  position.
- g. To completely extinguish the fire, depress the knob slightly and turn to  the position.
- h. Replace ash pan cover.

Note: - If the ignition fails the pilot can be lit with a taper or a match held at the pilot head.

NOTE: If the fire is extinguished in use for any reason wait 3 minutes before relighting.

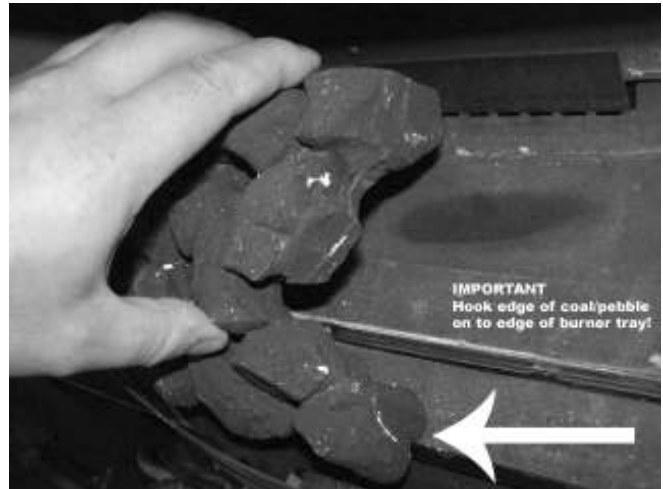
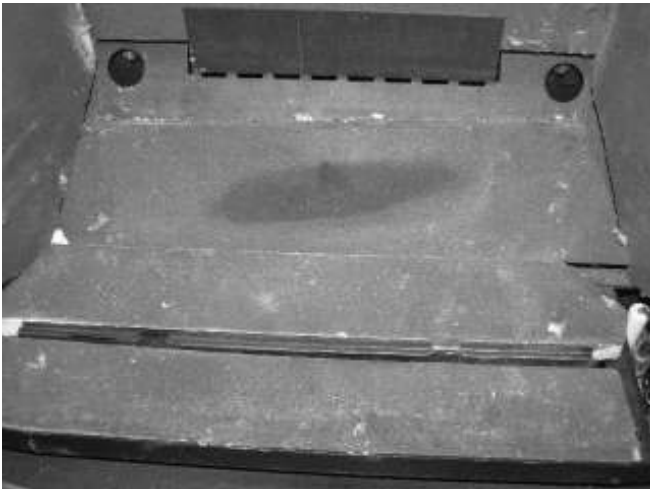
SECTION THREE Fuel Bed Layout

It is important that all the fuel bed and moulded shapes are positioned as shown in these instructions.

Some soot deposits will form on the fuel bed, this is perfectly normal and adds to the realism of the appliance. USE ONLY THE FUEL BED COMPONENTS PROVIDED AND NO ADDITIONAL FUEL BED ITEMS MUST ADDED.

The fuel bed set consists of: - 1 two piece fuel bed (coal or pebble)

Ensure the Fuel Bed Support boards are in position so that it covers over the top of the burner support and angles back support as shown. **DO NOT** place in the small back liner board until the fuel bed is fully in place.



COAL FUEL BED

Ensure that the 'Fuel Bed Support' is fitted as above. Firstly position the left hand coal matrix as above and then the right hand, as shown below. Make sure that the front edge of the fuel matrix locates behind the front edge of the burner tray to secure the fuel bed properly as shown above.

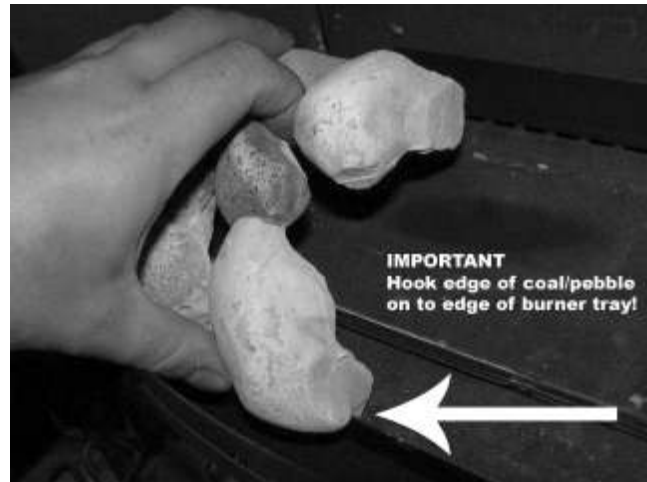
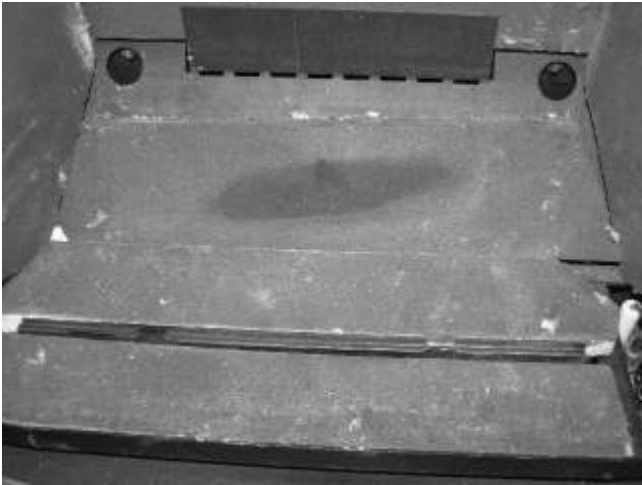


Now place the right side of the fuel bed in position behind the front ledge of the tray as shown above. Finally place the small back liner board in place behind the fuel bed to cover the metal bracket behind.

PARAGON SIESTA PLUS Users Instructions

PEBBLE FUEL BED

Ensure that the 'Fuel Bed Support boards" are fitted as below. Firstly position the left hand pebble matrix and then the right hand, as shown below. DO NOT fit the small back liner board until the fuel bed is in position.



Now place the right side of the fuel bed in position behind the front ledge of the tray as shown above. Finally place the small back liner board in place behind the fuel bed to cover the metal bracket behind

SECTION FOUR Cleaning

Warning: -Before you clean any part of the appliance ensure that the appliance is turned off and cool.

CLEANING: DECORATIVE TRIM

- The finish of the trim may from time to time need cleaning. They should be removed for cleaning.
- These surfaces should be dusted regularly and any marks removed with a soft cloth.
- Abrasive or chemical cleaner should never be used.

CLEANING Fuel Bed Parts

Important: - Refer to the 'Heath & Safety Notice located on page 3 of this booklet before cleaning or replacing any refractory material.

- The fuel bed parts are delicate and they should be handled with great care.

SECTION FOUR Cleaning cont'd

- The loose shapes may be removed for cleaning. They can be brushed very gently with a soft brush to remove dust or any deposits.
- Care should be taken to avoid contact with the refractory lining or the Fuel Bed Support; this is a delicate surface and should **not** be wiped or rubbed.
- A vacuum cleaner may only be used after all the Shapes and the Fuel Bed Support have been removed.

SECTION FIVE General Points

Like all appliances incorporating an aerated burner a low frequency noise may be heard, particularly on the Low setting, this is quite normal and does not affect the operation of the appliance.

It is advised that your fire must be serviced annually as this is more likely to provide trouble-free operation.

It is important that: -

- The chimney or flue is checked annually to ensure clearance of combustion products.
- The fire does not normally require purpose-built ventilation but if for any special reason purpose-built ventilation is provided it should be checked periodically to ensure freedom from obstruction.
- Any debris from the chimney or flue should be removed. The fire should be allowed to cool for three to four hours before it is removed.
- Rubbish must not be thrown onto the fuel bed under any circumstances.

The only user removable parts are: -

- Pebble or Coal Matrix
- Fuel Bed Support
- Decorative effect trim

SECTION SIX Appliance Data

Category of appliance:.....BII_{AS} Category I_{2H}
Overall dimensions:.....Height 515mm
Width 700mm
Forward Projection:.....85mm, (From Wall.)
Weight:.....15kg
Gas Type:.....G20 Natural Gas
Gas Pressure:.....20 mbar +/- 1.0mbar
Pressure Test Point Location:.....Gas inlet elbow
Gas Input (Gross):.....6.6 kW (Maximum) 2.4 kW (Minimum)
Injector:.....Marked 400
Gas Connection:.....8.0mm O/D, tube.
Data Badge Location:.....Behind the decorative Fascia

PACK CONTENTS

Appliance

Appliance mounting frame

Owners Instruction

Foam Seal

Trim and fascia set

Refractory Components

Base board

Fuel Bed Matrix Pebble or Coal

SECTION SEVEN Regulations and Warnings

- **THIS APPLIANCE MUST ONLY BE INSTALLED IN GREAT BRITAIN OR IRELAND.**
- **THE APPLIANCE IS SUITABLE FOR USE ON NATURAL GAS ONLY.**
- **THE APPLIANCE IS INTENDED FOR DECORATIVE PURPOSES.**
- **(GB) NO SPECIAL VENTILATION BRICKS OR VENTS ARE REQUIRED INTO THE ROOM CONTAINING THE APPLIANCE, PROVIDING NORMAL ADVENTITIOUS ROOM VENTILATION EXISTS. THE INSTALLER MUST SATISFY THIS POINT BY CARRYING OUT THE MANDATORY SPILLAGE TEST.**
- **(IE) PERMANENT VENTILATION MUST COMPLY WITH THE CURRENT EDITION OF IS813.**
- **In GB, IT IS THE LAW THAT ALL GAS APPLIANCES MUST BE INSTALLED BY A COMPETENT PERSON; I.E. A CORGI REGISTERED INSTALLER, IN ACCORDANCE WITH THE CURRENT GAS SAFETY (INSTALLATION AND USE) REGULATIONS (AS AMENDED), ALL RELEVANT PARTS OF THE LOCAL AND NATIONAL BUILDING REGULATIONS AND ALL RELEVANT RECOMMENDATIONS OF THE FOLLOWING BRITISH STANDARDS. FAILURE TO DO SO COULD LEAD TO PROSECUTION.**

THE FOLLOWING ARE RELEVANT CODES OF PRACTICE AND BRITISH STANDARDS: -

BS 5871 PART 2

BS 5440 PART 1

BS 6891

BS 715

BS 8303

BS 1251

BS 6461 PARTS 1 AND 2

BS 1289 PART 1

Note: - This appliance must be installed to current versions of the above standards and include any relevant amendments.

SECTION SEVEN Regulations and Warnings Cont.

THE BUILDING REGULATIONS ISSUED BY THE DEPARTMENT OF THE ENVIRONMENT.
THE BUILDING STANDARDS (SCOTLAND) (CONSOLIDATED) REGULATIONS ISSUED BY THE
SCOTTISH DEVELOPMENT OFFICE.

IN IE, THE APPLIANCE MUST BE INSTALLED BY A COMPETENT PERSON AND INSTALLED IN ACCORDANCE WITH THE CURRENT EDITION OF I.S.813 DOMESTIC GAS INSTALLATION, THE CURRENT BUILDING REGULATIONS AND THE CURRENT ETCI RULES FOR ELECTRICAL INSTALLATION ,IF APPROPRIATE.

PRIOR TO THE INSTALLATION ENSURE THAT THE LOCAL DISTRIBUTION CONDITIONS (IDENTIFICATION OF TYPE OF GAS AND PRESSURE) AND ADJUSTMENT OF THE APPLIANCE ARE COMPATIBLE. (G20 @ 20mbar)

WARNINGS

- This appliance has a naked flame, and with all such fires, it is recommended that a fireguard should be used for the protection of children, the elderly, or the infirm. Fireguards should conform to B.S.6539 (1984) (Fireguards for use with solid fuel appliances)
- **This appliance incorporates a safety device in the form of an Oxygen depletion system. IT MUST NOT BE ADJUSTED OR PUT OUT OF OPERATION! THIS IS A NON-SERVICEABLE ITEM AND MUST BE EXCHANGED AS A COMPLETE ASSEMBLY USING ONLY THE ORIGINAL MANUFACTURER'S PART.**

During initial firing, an odour may be evident. This is the starch binder used during the manufacture of the fibre components of the fire, and there are **no harmful** effects produced.

Care must be taken to prevent any damage being caused to surrounding soft furnishing or decoration, e.g. many embossed vinyl wall coverings may become discoloured if placed too close to the appliance.

IMPORTANT NOTES

This appliance can be used in conjunction with the following chimneys: -

- Conventional brick or stone chimney,
- A pre-cast flue (subject to adequate draw) or
- A metal flue box conforming to BS 715, further details are covered in later text .

SECTION EIGHT Siting the Appliance

The fire can be installed in the following flues and locations: -

• CLASS ONE

A conventional brick or stone chimney, with the builder's opening constructed of non-combustible material as used for a solid fuel appliance, with a minimum effective cross-sectional dimension of 225 x 225 mm (9 x 9 ins) or a lined flue (e.g. clay, metal etc.) with a minimum diameter of 125 mm (5 ins), with a minimum effective overall height of 3 metres (10 ft). Consisting of a builder's opening with a minimum height of 450 mm and minimum width of 320 mm wide and a minimum depth of 150mm (or 120mm if flue has never been used for solid fuel) to allow sufficient volume for debris collection. No hearth is necessary but the base of the opening must be 50mm or more from floor surface.

SECTION EIGHT Siting the Appliance Cont.

Any permanent flue restriction or variable dampers shall be removed or locked fully open. The chimney should be swept prior to installation if not new or previously used with a gas appliance.

CLASS TWO

Pre-cast

A pre-cast flue correctly constructed conforming to the requirements of BS 1289: 1975, 1986 or 1989 with a minimum effective overall height of 3 metres (10 ft) which is correctly terminated (see BS 5440).

Note: An inspection should be made to ensure that the internal walls of the flue are clear of mortar fangs. It is recommended that the plasterwork should not be directly bonded to the surface of the flue blocks, ensuring that there is a small air gap between the flue blocks and the wall surface. The fire can be installed with the plasterwork being directly bonded to the flue blocks but there is a risk of surface cracking occurring to the plaster above the appliance.

The gather block which is the first block with a closed face in the block stack must be at least 500mm from its under edge to the floor surface covering. The reason for this is to ensure that when the appliance is fitted the lowest point of the appliance is a minimum of 50mm from the floor covering.

It will be necessary to close off the lower part of the flue block opening to provide an opening height of 450mm to 470mm.

It is important that none combustible material (i.e. brick, mortar, plaster etc.) are used to close off the base of the opening, and that the new lower surface of the opening is made flat and smooth (this flat surface is for the appliance to rest upon and to shut off air below the appliance)

• CLASS TWO

Fabricated metal

A double-walled or insulated metal flue box built to the requirements of BS 715 with a minimum diameter of 125 mm (5 ins) and a minimum effective overall height of 3 metres (10 ft).

Note: If the flue box is to be used with an existing brick or stone chimney a 125 mm (5 ins) minimum diameter flue liner conforming to BS 715 should be used.

Dampers or register plates must not restrict any of the above flues. The flue must only service a single appliance and not have any branches or traps that may impede the natural draught. If a terminal is fitted it must be suitable for the purpose (see 'Approved Flues & Terminals' published by BG Technology Certification Services).

- The front face and the base of the fireplace opening must be flat to ensure that a good seal is formed between the rear and base of the appliance and the chimney to avoid any reduction of natural draught.
- The gather box must be at least 500mm from its top inside edge to the floor surface covering. The reason for this is to ensure that when the appliance is fitted the lowest point of the appliance is a minimum of 50mm from the floor covering.
- It will be necessary to close off the lower part of the flue box opening to provide an opening height of 450mm to 470mm.

It is important that non combustible material (i.e. metal, brick, mortar, plaster etc.) are used to close off the base of the opening, and that the new lower surface of the opening is made flat and smooth (this flat surface is for the appliance to rest upon and to shut off air below the appliance).

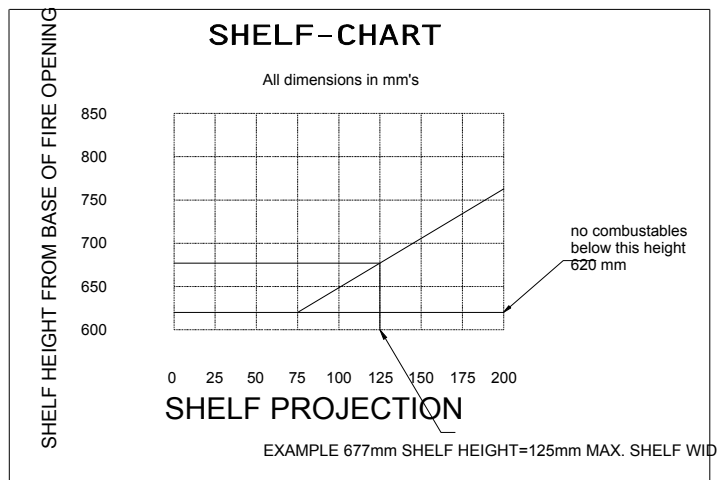
SECTION EIGHT Siting the Appliance Cont.

Clearance to Shelf or Surround

To check the compatibility of a combustible shelf or surround, refer to the chart.

Clearances at side of fire

Minimum width between vertical sides of combustible surround should not be less than 700 mm provided fire is central to surround and sides do not project more than 150 mm. When vertical side forward projection is increased by 12.5 mm add 50 mm to inside width of surround.



SECTION NINE To Install the Appliance

CHECKING THE FLUE AND FIRE OPENING

- Check that the chimney conforms to the required specifications as previously stated. Examine the condition and carry out any remedial work.
- If the flue has been used for solid fuel it should be swept prior to the installation.
- Prior to installing the appliance a smoke test (using a smoke bomb) should be carried out to check that satisfactory smoke clearance has been established. If all the smoke is not drawn into the flue, pre-heat the flue with a blowtorch or similar and re-check. If there is any uncertainty examine for the cause and, if necessary, seek expert advice.
- When installing this appliance against a dry lined (plasterboard) wall ensure that any void between the plasterboard and the wall is sealed with a suitable non-combustible material (i.e. plaster or mortar).

CONNECTING THE GAS SUPPLY

Determine where the gas supply is to be connected to the appliance. This may be done from the front of the unit from either the right or left side, or a concealed fitting from the rear.

Concealed gas connection (from the rear)

Note: It may be necessary to remove the burner to aid installation.

IMPORTANT: When removing the burner you must support the appliance battery pack to avoid putting undue strain on the leads.

It is recommended that the wall mounting plate and the fire box are temporarily fitted to the flue prior to routing the gas to help determine the best position for the gas supply

- If the supply is to be a concealed connection the supply must be routed to the right side of the unit, taking into account the requirements of BS 6891 1988 dealing with enclosed pipes.

A blind grommet is fitted to the rear of the appliance for the entry of the gas pipe (a hole should be cut in the grommet to fit the supply pipe - the grommet must be put back into place to seal box).

SECTION NINE To Install the Appliance Continued

- A restrictor elbow is positioned under the fire to the right-hand side with a 8mm compression connection at its inlet.
- Ensure after the connection as been made to the restrictor elbow that that shut off screw within the elbow is fully open and the cap fitted and sealed

Visible gas connection (to the front)

- Connections may be made from the front of the appliance from the right in 8mm diameter pipe.
- The tube should be routed under the fascia of the fire, across the trim of the Solar type.
- The inlet elbows should be rotated to the required position and the end of the 8mm gas feed pipe formed to route under control and into the inlet elbow.
- A suitable means of isolation should always be fitted in the supply feed to the fire to facilitate servicing.

Fixing the back plate to the fire opening (Fascia Assembly)

- Ensure that the fire opening size and position meets with the requirements stated in section 8 for the flue type (*Important: ensure a 50mm minimum from floor covering to base of fire opening*).
- Align the inside base of the back fixing plate frame with the base of the fire opening, use a spirit level to ensure level and mark through the four fixing holes
- Drill the four marked positions with a masonry drill, apply a suitable high temperature sealant (high modulus silicone or fire clay etc.) around the rear of the mounting plate, fix the mounting plate in position using wood screws and wall plugs. The spacer frame does not need to be removed until the fire reaches the end of its life so it can be permanently sealed.
- The main firebox can now be positioned into the opening ensuring that the holes in the firebox flange pass over the four projecting studs from the mounting plate. It will be necessary to make the gas connection to the appliance at this stage this can be aided by the removal of the burner unit (see “Connecting the gas supply”).
- Where required fit the inner trim and brushed stainless fuel retainer assembly to the studs before fitting the securing nuts.
- Fit the Four M4 nuts to secure the firebox to the spacer box frame. (See Fig 3)
- Now fit the firebox liners and fuel beds as described in the relevant section on fuel bed assembly.
- The decorative fascia front panel can now be fitted; this is fixed by hooking over the top of the firebox top corners, or magnetically supported with additional support tabs on the firebox base for the Solar mini version.




SECTION NINE To Install the Appliance Continued

- After the gas soundness test, and fuel bed as been laid correctly and a satisfactory spillage test as been carried out the decorative frame can be finally fitted.

Gas Soundness Test

Turn on the gas supply to the appliance and check for soundness in accordance with current codes of practice. (refer to BS6891 (in GB) or IS813(in IE)

Check Burner Pressure and General Operation

- Remove ash pan cover and decorative fascia panel by lifting away.
- Remove the screw from the pressure test point on the inlet elbow and fit pressure gauge.
- Turn on the gas to the appliance.
- Purge the air from the appliance by rotating the control to the ignition position, push in to allow the air in the pipe work to be purged and the piezo to ignite the pilot.
- Check that the electrode is sparking at the gap between the thermocouple tip and the electrode, continue until pilot ignition is established.
- Depress the control knob slightly and rotate anti-clockwise until the index symbol is aligned with the  on indicator label, release and allow the appliance to run.
- Check the inlet pressure is 20 ± 1 mbar.
- Refit pressure test point screw and check for leaks.
- Refit ash pan cover.

Fuel Bed Layout

IMPORTANT: - REFER TO THE 'HEALTH & SAFETY NOTICE SEE SECTION ONE OF THIS BOOKLET BEFORE CLEANING OR REPLACING ANY REFRACTORY MATERIAL.

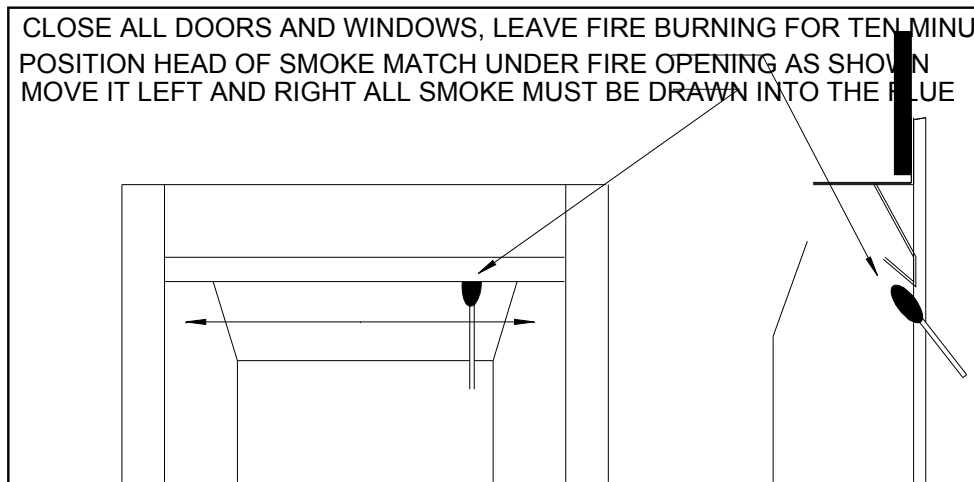
It is important that all the Fuel bed moulded shapes are positioned as shown in these instructions. Lay fuel bed as shown under **Section Three** of these instruction.

USE ONLY THE FUEL BED PARTS PROVIDED AND NO ADDITIONAL SHAPES MUST BE ADDED.

SECTION TEN Checking Operation of Fire

Checking Product Clearance

- Check for satisfactory clearance of combustion products, close all doors and windows and leave fire burning for five minutes.
- Insert lighted smoke match 10mm into the fire immediately under the canopy, move match horizontally along from one side to the other all the smoke should be drawn into the flue.
- If spillage occurs, allow a further 5 minutes. Should spillage still occur, turn off the fire, remove the restrictor plate (if fitted) and repeat clearance otherwise seek expert advice.
- If an extractor fan is situated in the room this test should be repeated with the fan running. If there is a connected room with an extractor fan, the test should be repeated with all the doors to that room opened and the extractor fan running at maximum setting. Should spillage occur seek expert advice.



ADVISE CUSTOMER THAT:

The curing effect of heating the fuel bed and other ceramic components will cause an initial odour. This is due to the starch used in the manufacturing process and is non-toxic. Any debris should be cleaned from the appliance. A vacuum cleaner can be used but only after all the Loose fuel bed and Fuel Bed Support have been removed. The appliance should be serviced annually by a competent person in accordance with these instructions and the appliance checked for spillage in accordance with the method detailed in these instructions.

Demonstrate the lighting and extinguishing procedures to the user and the removal and refitting of the decorative trim for cleaning.

If ventilation is fitted for any reason it must be checked regularly to ensure freedom from obstructions.

Hand these instructions over to the user.

SECTION ELEVEN Maintenance

- Servicing should be carried out annually by a competent person such as a CORGI-registered person in accordance with the relevant regulations, to ensure the safe and correct operation of the appliance.
- Before commencing any service or replacement of parts, turn off the gas supply to the fire. After servicing check for gas soundness.
- When ordering spare parts please quote appliance name and serial number these can be found on the data badge, which is located by removing the decorative fire trim.
- At least once a year, check for debris in the catchment area behind the fire and in the flue way.
- If soot has accumulated check to establish cause, rectify and clean flue or chimney accordingly.
- Examine the coals or pebbles for signs of cracking and replace if necessary. **IMPORTANT: - REFER TO THE 'HEALTH & SAFETY NOTICE IN SECTION ONE OF THIS BOOKLET BEFORE CLEANING OR REPLACING ANY REFRACTORY MATERIAL.** Refer to coal or pebble layout procedure (Section Three) before attempting to replace coals or pebbles, which should only be replaced as a complete set with no extra coals or pebbles added.
- Check pilot aeration holes for linting; use a vacuum cleaner to remove any lint taking care not to damage the pilot head.

Replacement of Gas Control

1. Turn off the gas supply by the isolating cock.
2. Remove decorative trims.
3. Remove moulded refractory parts.
4. Remove control knob from shaft by pulling off.
5. Remove 4 screws fixing burner unit into the casing.
6. Disconnect fire at inlet elbow and remove burner unit from the casing.
7. Disconnect the thermocouple from the rear of the gas valve.
8. Undo the compression nuts securing the pipes to the gas valve and remove the nut screws fixing the valve to the bracket.
9. Clean, service or replace gas valve.
10. Re-assemble in the reverse order.
11. Turn on the gas supply, check for soundness and re-commission appliance.

Replacement of Injector

1. Repeat operations 1-5 for removal of gas control.
2. Remove the 2 screws and lift out the burner and silencer pad.
3. Undo injector Lock nut, compression fitting and remove the injector.
4. Clean or replace injector.
5. Re-assemble in the reverse order.
6. Turn on the gas supply, check for soundness and re-commission

SECTION ELEVEN Maintenance Cont.

Replacement of Silencer

1. Repeat operations 1-2 for replacement of injector.
2. Remove silencer.
3. Clean, service or replace silencer.
4. Re-assemble in the reverse order.
5. Turn on the gas supply, check for gas soundness and re-commission appliance.

Replacement of Oxy-Pilot Assembly

NOTE: If the pilot assembly is replaced it must be replaced by an identical unit from the same manufacturer and replaced as a complete unit.

1. Repeat operations 1-5 for removal of gas control.
2. Disconnect the thermocouple from the gas valve.
3. Disconnect the gas connection from the pilot assembly.
4. Remove ignitor lead from pilot assembly.
5. Undo the Long-nut securing the oxy-pilot to the burner.
6. Clean or replace oxy-pilot (NOTE: - THIS IS A NON-SERVICEABLE DEVICE AND MUST NOT BE ADJUSTED).
7. Re-assemble in the reverse order.
8. Turn on the gas supply, check for gas soundness and re-commission appliance.

PARAGON SIESTA PLUS

THIS IS YOUR EXTENDED THREE YEAR PARTS

WARRANTY

PLEASE READ IT CAREFULLY AND ENSURE YOUR INSTALLER HAS FILLED IN THE FIRST PORTION, KEEP IT IN A SAFE PLACE SO THAT IT IS AVAILABLE WHEN YOUR CORGI ENGINEER CARRIES OUT THE ANNUAL SERVICE.

THIS IN NO WAY REDUCES YOUR STATUTORY RIGHTS

THE WARRANTY COMMENCES FROM THE DATE OF PURCHASE YOU MUST RETAIN YOUR RECEIPT OR INVOICE AS PROOF OF PURCHASE.

THIS EXTENDED WARRANTY SPECIFICALLY EXCLUDES SOFT REFRACTORY COMPONENTS AND ANY BATTERIES.

Terms and Conditions

1. The appliance must be installed by a CORGI registered person.
2. The appliance must be used in accordance with the users instructions.
3. A CORGI registered person must service the appliance annually.
4. The service log must be correctly filled out and the record of annual services must be up to date and supported by receipts in each case.
5. This warranty is not transferable and relates to the original installation only.
6. The Registration Form must be correctly filled out and returned.
7. The appliance has not been subjected to misuse or accident or been modified or repaired by any person other than the authorised employee or authorised representative of Charlton and Jenrick Ltd.
8. The registration form must be returned within 3 months of purchase.

PARAGON HELPDESK NUMBER 01952 278 020

PARAGON SIESTA PLUS

Important

For future reference we suggest you record the following details here, and keep the receipt as proof of purchase. This information may be asked for when you contact the helpdesk.

Model: **PARAGON SIESTA PLUS**

Serial No.

--	--	--	--	--	--	--	--

The serial number can be found on the label attached to the packaging and on the data badge, which is located on the appliance behind the trim, which is held on with magnets.

Retailer Name _____

Address _____

Date of Purchase

--	--	--	--	--	--	--	--

SERVICE LOG

The following information must be complete and supported by receipts as part of the conditions of the extended three year parts warranty and the appliance must be registered by completing and returning the registration document (last page of this booklet) to Paragon Fires.

Date of First annual service:

--	--	--	--	--	--	--	--

Engineer Name _____

Corgi Registration No.

--	--	--	--	--	--	--	--	--	--

Date of Second annual service:

--	--	--	--	--	--	--	--

Engineer Name _____

Corgi Registration No.

--	--	--	--	--	--	--	--	--	--

We may introduce modifications to products from time to time, and consequently the details given in this booklet are subject to alteration without notice.

Paragon Fires

Telford
Shropshire
TF7 4QJ

Telephone 01952 278 020
Web Site www.paragonfires.co.uk

PLEASE REGISTER YOUR 3 YEAR WARRANTY WITH US TODAY

Simply detach this sheet from this booklet, complete and return it in a stamped addressed envelope to:

PARAGON FIRES

Charlton and Jenrick Ltd
UNIT G1 – G3
HALESFIELD 5
TELFORD
SHROPSHIRE
TF7 4QJ

YOUR DETAILS

Name _____

Address _____

Post Code

TELEPHONE No.

PRODUCT DETAILS

Model: **PARAGON SIESTA PLUS** **Serial No.**

This information can be found on the label attached to the packaging and on the data badge, which is located behind the decorative trim of the appliance.

Date of Purchase

WHERE DID YOU PURCHASE THIS PRODUCT

Name _____

Address _____

Post Code

TELEPHONE No.

Paragon Siesta Plus Coal Packing

Product ID Label	A-0098	Serial No Prefix	KB
Fire Box Labels:	Top Spillage (Pair) Data Badge		
Fire Box Grommet			
Warning Label (Fire Guard)			
Burner Tray /Box Assembly			
Coal Fuel bed (Part no 4499)			
Fixing (0705) (includes 4 magnets & foam seal)			
Instructions			
Rear Insert Ceramic (Part No 5239)			
ID Label & Packing Label			
Serial Number			
Inspector			

Paragon Siesta Plus Pebble Packing

Product ID Label	A-0106	Serial No Prefix	KB
Fire Box Labels:	Top Spillage (Pair) Data Badge		
Fire Box Grommet			
Warning Label (Fire Guard)			
Burner Tray /Box Assembly			
Pebble Fuel bed (Part no 4498)			
Fixing (0705) (includes 4 magnets & foam seal)			
Instructions			
Rear Insert Ceramic (Part No 5239)			
ID Label & Packing Label			
Serial Number			
Inspector			