



**Johnson & Starley**

*SAP Appendix Q Eligible*

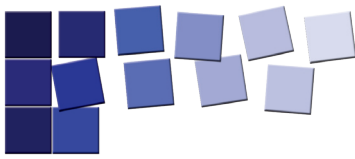


# DRYFLOW

## E1004

*Installation & Operating Instructions*





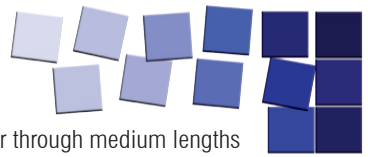
## **CONTENT**

1.	Description	<b>3</b>
2.	Features	<b>3</b>
3.	Installation	<b>5</b>
4.	Wiring Diagrams	<b>6</b>
5.	Maintenance	<b>7</b>
6.	Dismantling & Recycling	<b>7</b>

**THIS LEAFLET MUST BE LEFT AVAILABLE FOR THE USER**



# 1. DESCRIPTION



This **E1004** extractor fan is for exhausting air directly outside or through medium lengths of ducting and is suitable for wall or ceiling installation. To ensure optimum operation and guarantee a long life, please read this manual carefully. It explains how to install correctly, use and maintain the product properly. Following these instructions will ensure the reliability of the product and extend its working life.

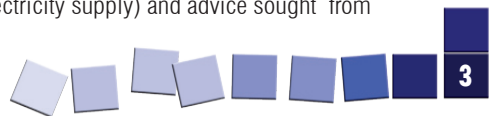
**The manufacturer will not be held responsible and will not accept any responsibility for damage caused to persons or things due to improper use with reference to the precautions outlined in this leaflet.**

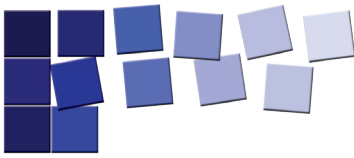
# 2. FEATURES

The product, constructed using state of the art technology, complies with current standards regarding electrical equipment. It conforms with the EMC 2004/108/EC European Directive regarding radio interference suppression and electromagnetic compatibility.

**WARNING: Serious injury or death could result if these instructions are not carefully followed**

- Do not use this product for any purpose other than that for which it was designed.
- Remove the product from its packaging and make sure that it has not been damaged. If in doubt, contact the supplier, authorised dealer, service centre or manufacturer to check that the product will still operate correctly. Do not attempt to use or repair the product before doing this.
- Do not leave packing material within the reach of children or unskilled people. To dispose of the packaging and the appliance at the end of its useful life refer to the recycling norms in force.
- The use of any electrical product requires compliance with some basic rules which are listed below:
  - do not touch it with wet or damp parts of the body (e.g hands, feet).
  - this product is not intended for use by persons (including children) with reduced physical, sensory or mental capabilities or lack of experience and knowledge, unless they have been given supervision or instruction concerning the use of the product by a person responsible for their safety. The fan should be sited where it is inaccessible to such people.
  - children should be supervised to ensure they do not play with the product.
- The product should be connected to the mains electricity supply or electrical outlet only if:
  - the electrical voltage and frequency correspond to those shown on the rating label.
  - the capacity of the electricity supply is sufficient to operate the product at its maximum power.
  - suitable electrical protection must be provided for the product to be installed.
- The electrical supply to which the fan is connected must comply with all existing regulations. All installations must comply with current IEE wiring regulations.
- Before maintenance or cleaning is carried out, the product must be switched off and disconnected from the mains electricity supply.
- If a fault, malfunction or anomaly of any type occurs, the fan should be isolated (switching it off and disconnecting it from the mains electricity supply) and advice sought from qualified personnel.





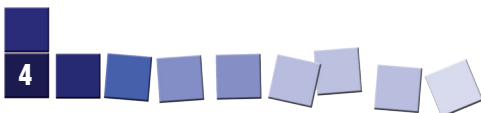
- Always request original spare parts for repairs
- If the product needs to be removed, turn off the mains supply circuit-breaker and then disconnect the fan.
- The fan **MUST BE** installed as detailed in this leaflet

**WARNING: Damage could be caused to the product if the installation instructions are not followed**

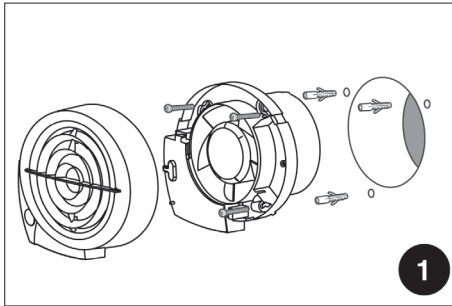
- The product should not be used in an ambient temperature higher than 40°C (104°F).
- The product should not be exposed to atmospheric agents (rain, sun, snow, etc.).
- The product or its parts should not be placed in water or other liquids.
- Routine maintenance as described below should be carried out to check the condition of the fan.
- The air or fumes being extracted must be clean and free from greasy particles, soot, chemical and corrosive agents, flammable or explosive mixtures.
- **The product must be installed by professionally qualified personnel. Incorrect installation can cause damage to people, animals or property, for which the manufacturer cannot be held liable.**
- The product must be connected to the electricity supply via a double pole switch of a suitable size, with contact openings of at least 3 mm.
- If the electrical supply board (or switching device) is located some distance from the fan a means of local isolation must be provided.
- To ensure optimum operation, do not block the air intake and exit vents.
- Any ducting used must be free of blockages.
- The room where the product is operating must have adequate air replacement to ensure maximum effectiveness.
- If the product is sited in a room containing a fuel burning appliance which is not of the balanced flue type, the installer must ensure that air replacement is adequate both for the fan and the fuel burning appliance (UNI CIG 7129).
- The product must **not** be used as an activator for water heaters, stoves, etc.
- The product must **not** exhaust into ducts designed to evacuate fumes from combustion in stoves or other combustion-powered devices.

**E1004** - this fan combines the latest technology with energy saving and efficiency. It is a quiet running, 3 speed fan. It is designed to run continuously at a pre-selectable choice of 2 lower speeds (fixed at installation). The user can boost the fan speed to its maximum performance when required by means of a remote switch, light switch, PIR sensor or humidistat.

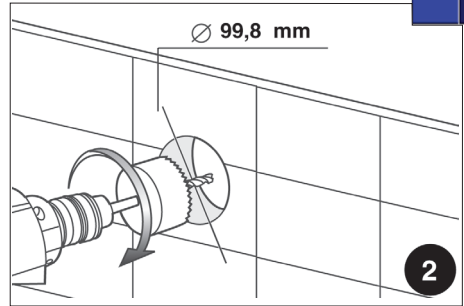
**The E1004 is SAP Appendix Q Eligible Product.**



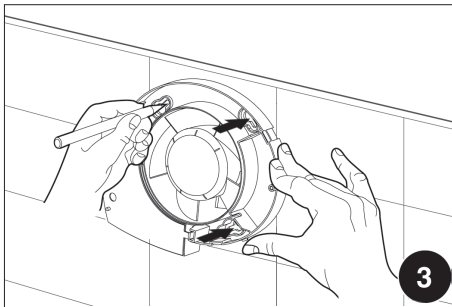
### 3. INSTALLATION



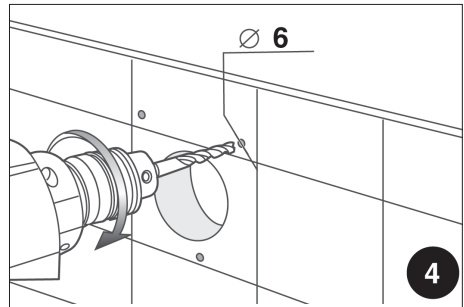
1. Check there is nothing missing in box and that instruction leaflet is included.



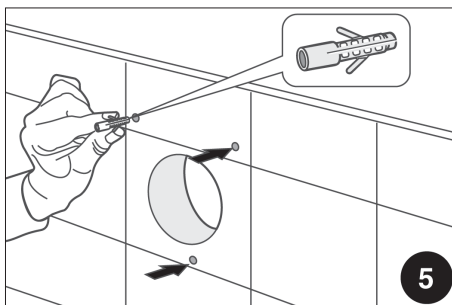
2. **Drill hole in wall - minimum dia 99.8mm - allow extra width if using ducting - it is the installer's responsibility to use the appropriate core cutter to obtain the correct hole.**



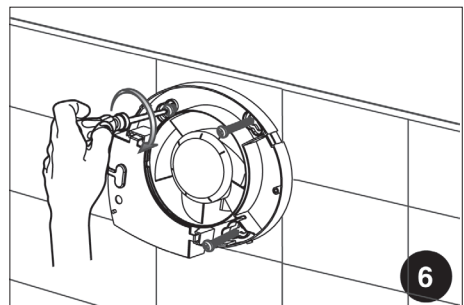
3. Use fan assembly as template to mark drill holes - NB fan can be at any angle.



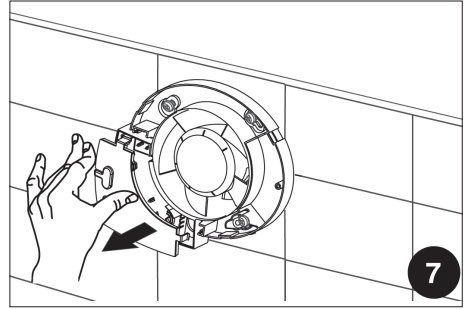
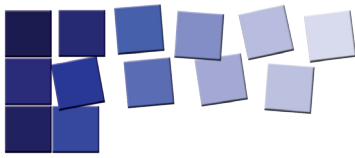
4. Drill 3 x 6mm diameter holes.



5. Fit wall plugs.



6. Screw fan to wall.

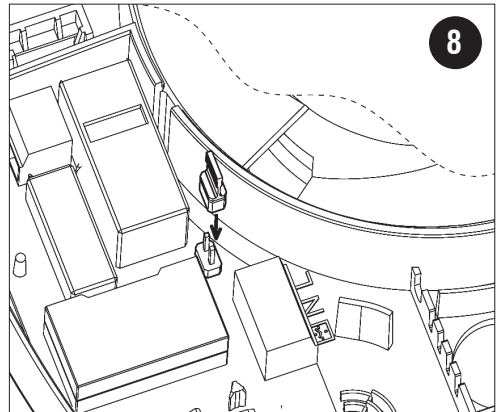
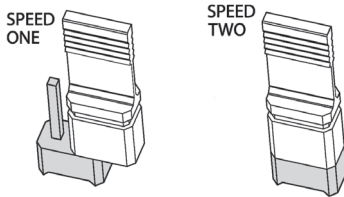


7. Make electrical connection

## 4. WIRING DIAGRAMS

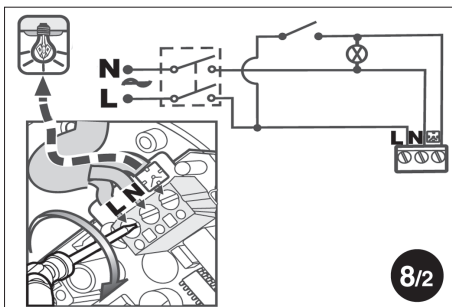
### E1004 - JUMPER

8. The E1004 is designed to run continuously at one of 2 lower speeds fixed at installation using the jumper switch. Fan supplied ready for Speed 1 - lowest speed. Installer can change to Speed 2 if required. The user can boost the fan speed to its maximum performance by using remote switch.



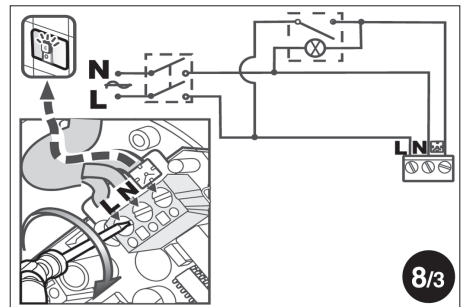
### VIA LIGHT SWITCH

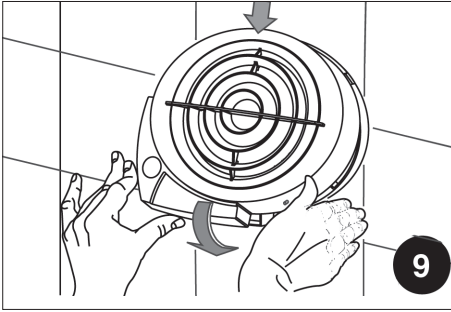
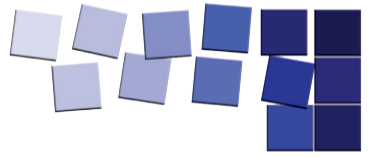
E1004 - 3 SPEED



### VIA REMOTE ILLUMINATED SWITCH

E1004 - 3 SPEED





9. Replace front cover.

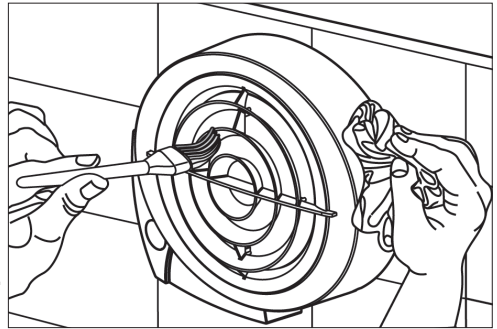
## 5. MAINTENANCE

Before any maintenance or cleaning operation, switch off the fan and disconnect it from the main power supply.

The front cover and grille can be cleaned with a dry cloth or soft brush.

The fan must not come into contact with any kind of liquid or solvent. If this should occur, contact a qualified technician before reassembling the fan.

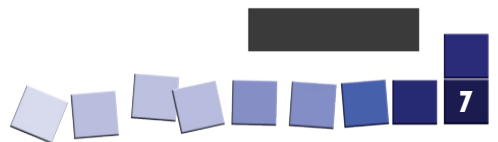
**NOTE: The motor does not require lubrication as it is maintenance free “sealed for life” type.**



## 6. DISMANTLING & RECYCLING

This product has been designed and constructed using high-quality materials and components that can be recycled or re-used.

Under the EU Directive 2002/96/EC on Waste Electrical and Electronic Equipment, this product must not be treated as household waste and should be disposed of accordingly.





**Johnson & Starley**

Rhosili Road, Brackmills, Northampton NN4 7LZ  
Main Switchboard Tel: 01604 762881 Fax: 01604 767408  
Spares Tel: 01604 707012 Fax: 01604 764879  
Service Tel: 01604 707011 Fax: 01604 707017  
[www.johnsonandstarley.co.uk](http://www.johnsonandstarley.co.uk)