



**Johnson & Starley**

# Reno HE

High Efficiency  
Boiler Range



Reno HE37C  
Reno HE30C



Reno HE31S  
Reno HE25S  
Reno HE16S



Reno HE31H  
Reno HE25H  
Reno HE16H

RELIABILITY YOU CAN TRUST

[www.johnsonandstarley.co.uk](http://www.johnsonandstarley.co.uk)



# A Warm Welcome

**Johnson & Starley** have been established since **1922** and have long been recognised as the **UK's leading supplier** of innovative **Home Comfort Solutions** to the UK domestic heating market.

The company helped to **pioneer** the first popular domestic central heating system in the post war period and since then its innovative and exciting approach to the market has resulted in a succession of the highest **quality heating** and **ventilation solutions**.

As a supplier to the installer, developer, private and social housing sectors, the company has earned wide recognition for the quality, reliability, ease of installation, quiet operation and long life of its products.

This approach has now resulted in the **Reno HE** High Efficiency boiler range - built to the same exacting standards as all the company's products and benefiting from the expertise of **Johnson & Starley's** unrivalled know-how and experience in **Home Comfort Solutions**.



## Contents

p3	Reno HE
p4	Easy Installation and Reduced Maintenance
p5	Reno Range Features
p6	Flue Options
p7	Twin Flue
p8	Flue Components
p9	Accessories
p10	Technical Specification



**HIGH EFFICIENCY BOILERS**

**WARM AIR CENTRAL HEATING  
VENTILATION & HEAT RECOVERY**

**FILTERS & CLEANERS  
WATER HEATERS & CYLINDERS**

**H O M E C O M F O R T S O L U T I O N S**

# Reno HE

## HIGH EFFICIENCY WALL HUNG BOILERS WITH **RENOWNED** QUALITY

The new **Reno HE** range of high efficiency boilers is aptly named. **Reno** stands for **Renowned** quality, performance, reliability and energy efficiency.

These boilers are **Sedbuk A** rated, easy to use and install and with a choice of intelligent models to suit the differing requirements of a wide social and private housing market. They are available in Natural Gas and LPG versions.

Models are available to provide a wide choice of installation options:

- **Reno HE37C**, 37 kW combination boiler  
**Reno HE30C**, 30 kW combination boiler
- **Reno HE31S**, 31 kW system boiler  
**Reno HE25S**, 25 kW system boiler  
**Reno HE16S**, 16 kW system boiler
- **Reno HE31H**, 31 kW heat only boiler  
**Reno HE25H**, 25 kW heat only boiler  
**Reno HE16H**, 16 kW heat only boiler



Reno HE37C, Reno HE30C



Reno HE31S, Reno HE25S, Reno HE16S

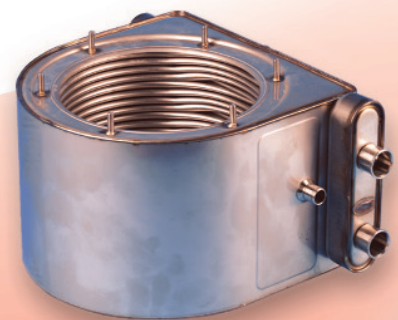


Reno HE31H, Reno HE25H, Reno HE16H

## Installer and Customer Led Design

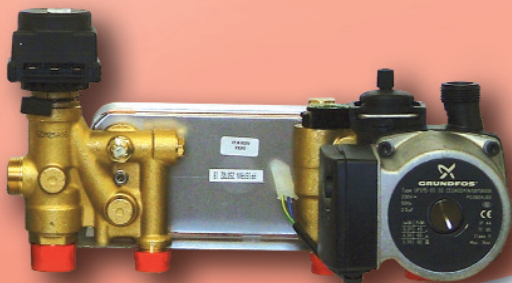
In designing the **Reno HE** range, **Johnson & Starley** has listened carefully to installers and their customers, to provide exactly the features they want.

- **Easy and versatile installation**
- Reliability and performance
- Longevity and energy efficiency
- High quality components
- Environmentally friendly
- Compact design



## The Highest Quality Components

- Primary Heat exchanger is manufactured from stainless steel for **high durability**, corrosion resistance and low maintenance
- **Two year guarantee** and five years for the primary heat exchanger
- Digital PCB with no moving parts
- Hi-tech user friendly controls
- Quality pumps



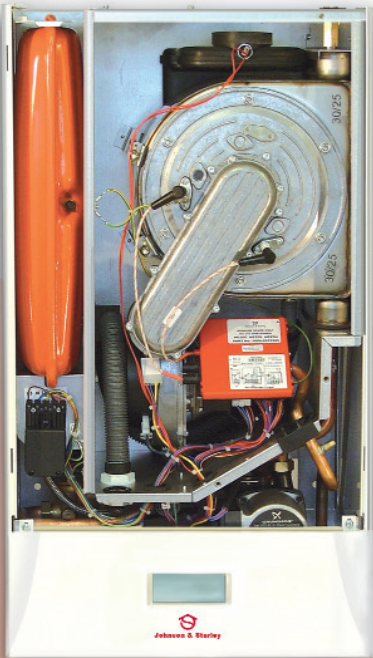
RELIABILITY YOU CAN TRUST



# Easy Installation & Reduced Maintenance

- Pressure gauge and filling loop, allowing simple fitting of the pipework
- Downloadable history ensures straight forward commissioning and future service work
- All **Reno HE** models have a lap top connection to permit fully remote in-depth diagnostics
- Test mode to check minimum and maximum (flow) rates

## Forward Thinking



The **Reno HE** range includes many environmental and technical innovations:

- Twin spark and detect electrodes which provide **greater stability** and **longer life**
- Fully modulating burner, 3.72-37.2kW, with wide turn down and thermister control for optimum comfort, maximum fuel efficiency and thus **fuel cost savings**
- A new energy efficient ultra quiet electronically smoothed fan
- Compatibility with underfloor heating systems
- Built in U trap
- In-built frost protection
- Timed pump overrun
- Low NOx class 5

## Energy Efficient Performance

- Typically **saves 30%** on the running costs of traditional boilers
- Meets the standards of Part L of the Building Regulations
- Sedbuk band 'A' rated

**HIGH EFFICIENCY BOILERS**

**WARM AIR CENTRAL HEATING**

**VENTILATION & HEAT RECOVERY**

**FILTERS & CLEANERS**

**WATER HEATERS & CYLINDERS**

**HOME COMFORT SOLUTIONS**

# Reno HE37C, Reno HE30C

## Combination Boilers

### FEATURES INCLUDE

- Temperature stabilising system to prevent hot slugs of water
- Opentherm, OTC and cascade heating compatible. Allows the option of sophisticated control
- Pre-heat option, improving hot water response time
- Domestic hot water delivery:  
**Reno HE37C** - 15.2 Ltrs/min @ 35° C Rise  
17.7 Ltrs/min @ 30° C Rise  
**Reno HE30C** - 12.3 Ltrs/min @ 35° C Rise  
14.3 Ltrs/min @ 30° C Rise
- Low pressure safety cut off with early warning indicator
- Intelligent pump & diverter valve with anti-seize protection to **reduce maintenance costs**
- Optional top entry flow and return
- Timer options - digital or analogue
- Fixing Jig for ease of installation

# Reno HE31S, Reno HE25S, Reno HE16S System Boilers

### FEATURES INCLUDE

- Intelligent pump anti-seize protection
- Optional top entry flow and return
- Fixing Jig



Reno HE31S, Reno HE25S, Reno HE16S

# Reno HE31H, Reno HE25H, Reno HE16H Heat Only Boilers

### FEATURES INCLUDE

- Intelligent pump anti-seize if wired from boiler
- Top entry flow and return
- Fixing bracket
- Top/bottom gas entry



Reno HE31H, Reno HE25H, Reno HE16H



Reno HE37C, Reno HE30C

# Flue Options

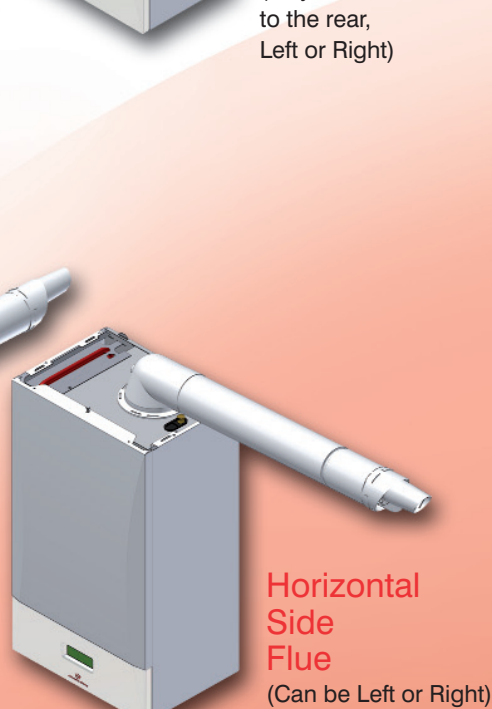
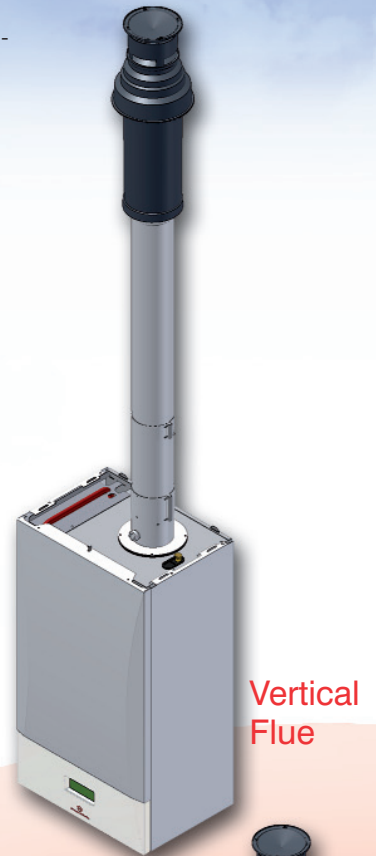
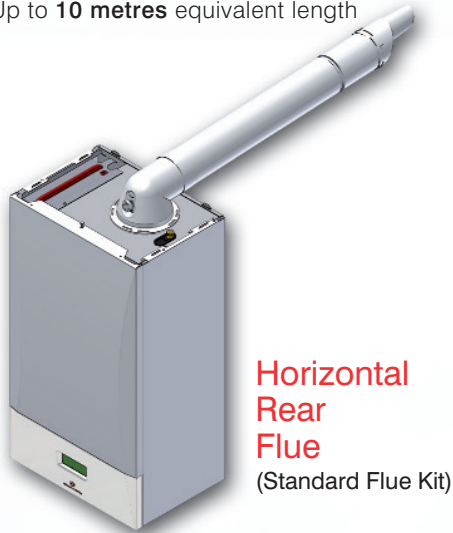
For flexibility of installation, the Reno HE High Efficiency boiler range has two flueing options -

## Concentric Flue and Twin Flue

- The horizontal flue terminal itself can be installed from inside the property and has a built-in fall
- Low profile flue turret has an integral sampling point to both increase installation options and provide easier servicing.

### Concentric Flue

Up to **10 metres** equivalent length



**HIGH EFFICIENCY BOILERS**

**WARM AIR CENTRAL HEATING**

**VENTILATION & HEAT RECOVERY**

**FILTERS & CLEANERS**

**WATER HEATERS & CYLINDERS**

HOME COMFORT SOLUTIONS

## Twin Flue

Up to **30 metres** equivalent length



Offset Twin to  
Horizontal  
Concentric  
Terminal

Offset Twin to  
Vertical  
Concentric  
Terminal

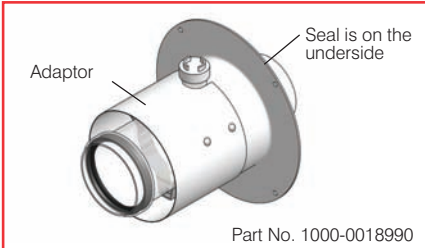
# Flue Components

## Concentric Flue

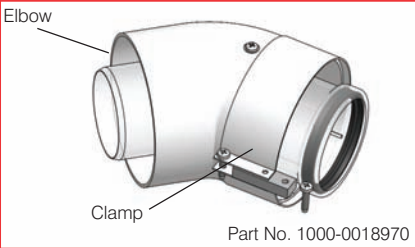
Standard Horizontal Flue Kit (60/100) Part No. 1000-0020070



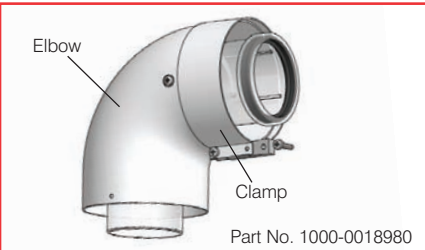
### Vertical Appliance Adaptor



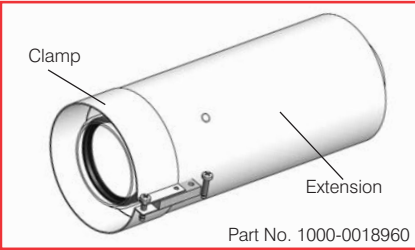
### 45 Degree Elbow



### 90 Degree Elbow



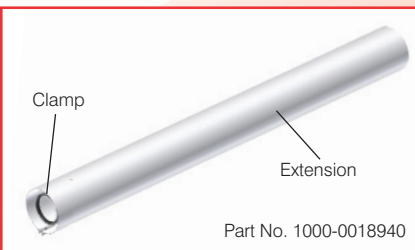
### 250mm Straight Extension



### 500mm Straight Extension



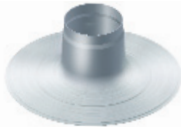
### 1000mm Straight Extension



## Concentric Flue Components

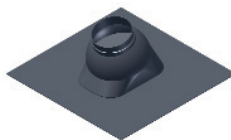
### Flat Roof Weather Collar

Part No. 1000-0020060



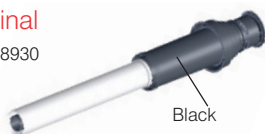
### Pitched Roof Weather Collar

Black - Part No. 1000-0020030  
Terracotta - Part No. 1000-0020040



### Vertical Terminal

Part No. 1000-0018930



### 100mm Wall Fixing Bracket

Part No. 1000-0020050



## Twin Flue

### Concentric Adaptor



### Twin Flue Adaptor

Part No. 1000-0020080



### 80mm Elbows

#### 90 Degree Elbow 80mm

Part No. 1000-0020100



#### 45 Degree Elbow 80mm

Part No. 1000-0020110



### Flue Extension & Bracket

#### Flue Extension 1 Meter 80mm

Part No. 1000-0020120



#### Wall Fixing Bracket 80mm

Part No. 1000-0020090



HIGH EFFICIENCY BOILERS

WARM AIR CENTRAL HEATING

VENTILATION & HEAT RECOVERY

FILTERS & CLEANERS

WATER HEATERS & CYLINDERS

HOME COMFORT SOLUTIONS



# Accessories

There are many accessories available for use with the Reno appliances. All are completely priced and readily available.

## Plume Management Kit 60mm



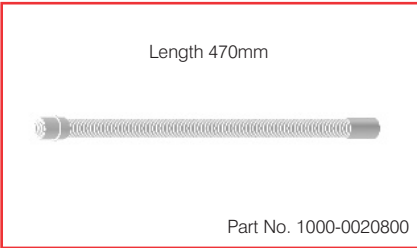
## Plume Management Kit Accessories



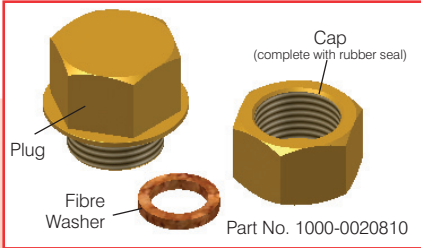
## Ridge Terminal



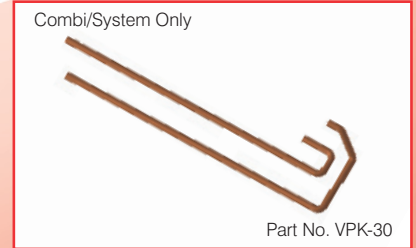
## Condensate Flexible Drain All Models



## Filling Loop Blanking Kit Combi Only



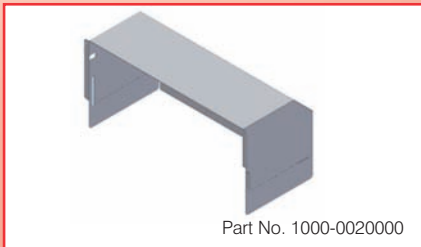
## Vertical Pipe Flow/Return Kit



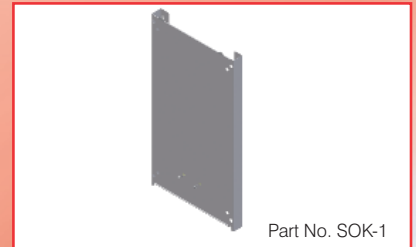
## Remote Controller Opentherm



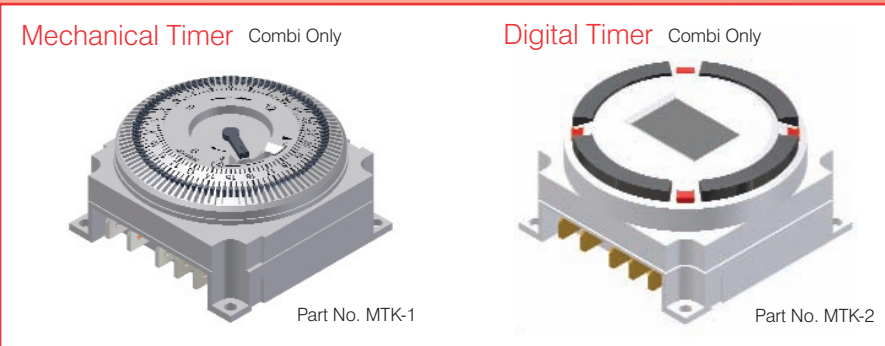
## Bottom Valance Combi/System Only



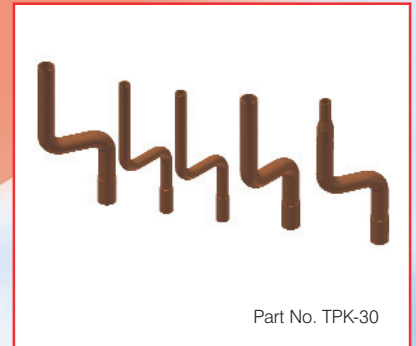
## Stand-Off Kit Combi/System Only



## Timers



## Tail Pipe Kit Combi/System Only



# Technical Specification

	Units	Reno 37C	Reno 30C
<b>Consumer Features</b>			
LPG Option		Yes	Yes
Height	mm	766	766
Width	mm	425	425
Depth	mm	300	300
Max. Continuous DHW flow rate raised 35 deg. C	Litres/min	15.2	12.3
Max. Continuous DHW flow rate raised 30 deg. C	Litres/min	17.7	14.3
Integral mechanical timer		Optional	Optional
Integral electronic timer		Optional	Optional
Remote 7 day programmable thermostat		Optional	Optional
Concealed user controls		Yes	Yes
User adjustable DHW temperature		Yes	Yes
User adjustable CH temperature		Yes	Yes
LCD status/fault display		Yes	Yes
LED status/fault display		No	No
<b>Technical Features</b>			
Seasonal Efficiency (Sedbuk) rating	Sedbuk	A	A
Min. installation clearances top	mm	150	150
Recommended installation clearances bottom	mm	200	200
Minimum clearance left/right	mm	5	5
Minimum clearance front operating	mm	5	5
Minimum clearance front servicing	mm	450	450
Maximum heat input DHW (net)	kW	38.0	30.6
Maximum heat input CH (net)	kW	30.7	25.5
Maximum heat output DHW (net)	kW	37.1	30
Maximum heat output CH - Condensing (Non Condensing Mode)	kW	32.6 (30.0)	27.85 (25.0)
Maximum gas rate	m/hr	3.9	3.2
Minimum heat input DHW (net)	kW	9.18	7.14
Minimum heat input CH (net)	kW	9.18	7.14
Minimum gas rate	m/hr	0.95	0.74
NOx class		5	5
Minimum DHW flow rate	Litres/min	2.2	2.2
Minimum DHW operating pressure	bar	0.5	0.5
Maximum DHW inlet pressure	bar	10	10
Safety discharge pressure	bar	3	3
Automatic modulation of CH output		Yes	Yes
Automatic by-pass to be fitted in system		Yes	Yes
Expansion Vessel	Litres	8	8
Filling loop		fitted	fitted
Pre-plumbing wall jig		Yes	Yes
Gas connection	mm	15	15
CH Flow and Return connections	mm	22	22
DHW inlet and outlet connections	mm	15	15
Pressure relief discharge tail	mm	15	15
Installation lift weight	kg	47	45
Electrical supply	V/Hz	230/50	230/50
Power consumption	watts	145	145
Electrical protection		IP40	IP40
Electronic ignition		Yes	Yes
Frost protection		Yes	Yes
Pump exercise		Yes	Yes
Pump overrun		Yes	Yes
Diverter valve exercise		Yes	Yes
Concentric flue diameter	mm	100	100
Twin flue diameter	mm	80	80
Standard concentric/twin flue length	m	1	1
Maximum horizontal concentric equivalent flue length	m	7.5	10
Maximum vertical concentric equivalent flue length	m	7.5	10
Maximum twin flue horizontal equivalent length	m	23	30
Maximum twin flue vertical equivalent length	m	30	30
Optional Flow and Return pipe kit		Yes	Yes

**HIGH EFFICIENCY BOILERS**

**WARM AIR CENTRAL HEATING**

**VENTILATION & HEAT RECOVERY**

**FILTERS & CLEANERS**

**WATER HEATERS & CYLINDERS**

**HOME COMFORT SOLUTIONS**

Reno 31S	Reno 25S	Reno 16S	Reno 31H	Reno 25H	Reno 16H
Yes	Yes	Yes	Yes	Yes	Yes
766	766	766	640	640	640
425	425	425	370	370	370
300	300	300	300	300	300
N/A	N/A	N/A	N/A	N/A	N/A
N/A	N/A	N/A	N/A	N/A	N/A
N/A	N/A	N/A	N/A	N/A	N/A
N/A	N/A	N/A	N/A	N/A	N/A
Optional	Optional	Optional	Optional	Optional	Optional
Yes	Yes	Yes	Yes	Yes	Yes
N/A	N/A	N/A	N/A	N/A	N/A
Yes	Yes	Yes	Yes	Yes	Yes
Yes	Yes	Yes	No	No	No
No	No	No	Yes	Yes	Yes
A	A	A	A	A	A
150	150	150	150	150	150
200	200	200	200	200	200
5	5	5	5	5	5
5	5	5	5	5	5
450	450	450	450	450	450
N/A	N/A	N/A	N/A	N/A	N/A
30.7	25.5	16.3	30.7	25.5	16.3
N/A	N/A	N/A	N/A	N/A	N/A
32.6 (30.0)	27.85 (25.0)	17.8 (16.0)	32.6 (30.0)	27.85 (25.0)	17.8 (16.0)
3.2	2.6	1.7	3.2	2.6	1.7
N/A	N/A	N/A	N/A	N/A	N/A
9.18	7.14	3.78	9.18	7.14	3.78
0.85	0.74	0.4	0.85	0.74	0.4
5	5	5	5	5	5
N/A	N/A	N/A	N/A	N/A	N/A
N/A	N/A	N/A	N/A	N/A	N/A
N/A	N/A	N/A	N/A	N/A	N/A
3	3	3	N/A	N/A	N/A
Yes	Yes	Yes	Yes	Yes	Yes
Yes	Yes	Yes	Yes	Yes	Yes
8	8	8	N/A	N/A	N/A
N/A	N/A	N/A	N/A	N/A	N/A
Yes	Yes	Yes	N/A	N/A	N/A
15	15	15	15	15	15
22	22	22	22	22	22
N/A	N/A	N/A	N/A	N/A	N/A
15	15	15	N/A	N/A	N/A
44	42	42	35	33	33
230/50	230/50	230/50	230/50	230/50	230/50
145	145	145	95	95	95
IP40	IP40	IP40	IP40	IP40	IP40
Yes	Yes	Yes	Yes	Yes	Yes
Yes	Yes	Yes	Yes	Yes	Yes
Yes	Yes	Yes	Yes	Yes	Yes
Yes	Yes	Yes	Yes	Yes	Yes
N/A	N/A	N/A	N/A	N/A	N/A
100	100	100	100	100	100
80	80	80	80	80	80
1	1	1	1	1	1
10	10	10	10	10	10
10	10	10	10	10	10
23	30	30	23	30	30
30	30	30	30	30	30
Yes	Yes	Yes	N/A	N/A	N/A



# Johnson & Starley

The **Reno HE** High Efficiency Wall Hung Condensing Boiler Range is just part of Johnson & Starley's total Home Comfort Solutions. These include warm air heaters, ventilation, heat recovery systems and ancillary products.

The company's commitment to the market includes full technical support, after-sales service and installer training programmes both on-site and at the company's new head office training facility.

## HOME COMFORT SOLUTIONS

### Company Details

Website Address [www.johnsonandstarley.co.uk](http://www.johnsonandstarley.co.uk)  
Email [sales@johnsonandstarley.co.uk](mailto:sales@johnsonandstarley.co.uk)  
[marketing@johnsonandstarley.co.uk](mailto:marketing@johnsonandstarley.co.uk)  
Telephone Number **01604 762881** (Main switchboard)  
Fax Number **01604 767408**

### Spares

Telephone **01604 707012**  
Fax **01604 762884**



Designed and manufactured in Northampton for the UK market

### Sales

Telephone **01604 707012**  
Fax **01604 764879**

### Service

Telephone **01604 707011**  
Fax **01604 707017**

### Warm Air Upgrade Enquiry Service

Telephone **01604 707026**  
Fax **01604 707017**

## COMMERCIAL & INDUSTRIAL H&V SOLUTIONS

### Company Details



Johnson & Starley Dravo Division Industrial H&V

Website Address [www.dravo.co.uk](http://www.dravo.co.uk)  
Email [dravo@johnsonandstarley.co.uk](mailto:dravo@johnsonandstarley.co.uk)  
[marketing@johnsonandstarley.co.uk](mailto:marketing@johnsonandstarley.co.uk)  
Telephone Number **01604 707022**  
Fax Number **01604 706467**

Rhosili Road Brackmills Northampton NN4 7LZ

In the interests of continuous development Johnson & Starley reserve the right to change specification without prior notice.

Publication No.: ZZ1233/5  
September 2007

RENO BOILER RANGE

HI-SPEC WARM AIR HEATERS

ECONOMAIRE WARM AIR HEATERS

HOME 'N' DRY VENTILATION

HEAT RECOVERY

DRYFLOW