

REP24 CO

***Electronic Proportional Heat / Cool Thermostat
with Manual Heat/Cool Selection***



GB

Installation Instructions
User Instructions

Danfoss

Index



Installation Instructions
User Instructions

3-5
6

Installation Instructions

Please note

This product should only be installed by a suitably qualified electrician or heating installer. The installation must comply with local Building Regulations and Wiring Regulations, including any competent person requirements that may exist.

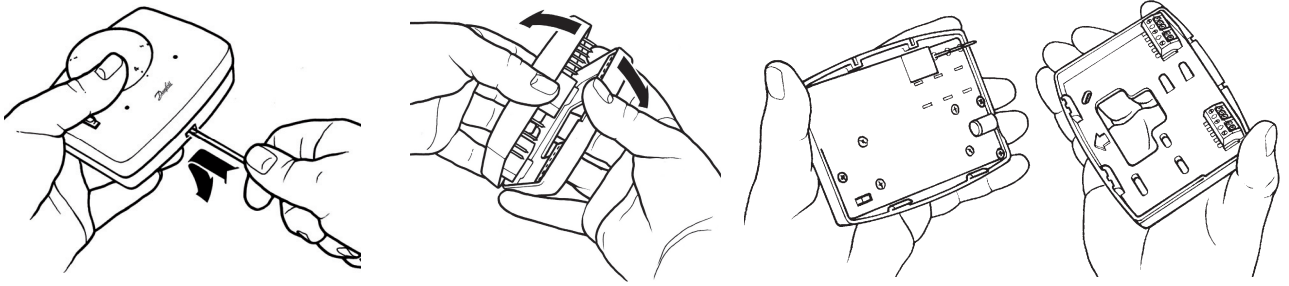
Specification

| Thermostat features | |
|---|------------------------------|
| Temperature Range | 10-30°C |
| Thermostat Heat, Standby, Cool Selector | Yes |
| Power Supply | 24 Vac \pm 15%, 50/60Hz |
| Control Method | P+I, 2k Proportional Band |
| Dimensions (mm) | 110 wide x 90 high x 40 high |
| Design Standard | EN60730-2-9 |
| Rated Impulse Voltage | 2.5Kv |
| Ball Hardness Test | 75°C |
| Control Pollution Situation | Degree 2 |
| Temperature Accuracy | \pm 1°C |
| Control Output | 0 - 10 Vdc |

Product overview

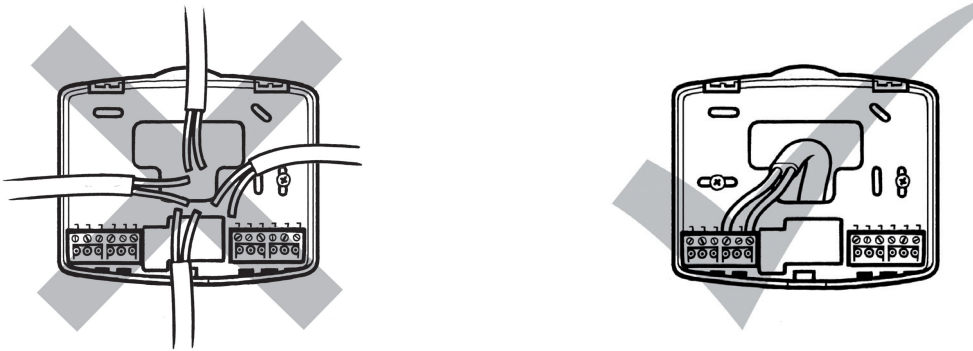
This thermostat is designed for fan coil and chilled beam applications alongside proportional valve and actuator systems where a 0-10v proportional control output is required.

- ❑ First remove the wallplate from the back of the unit.

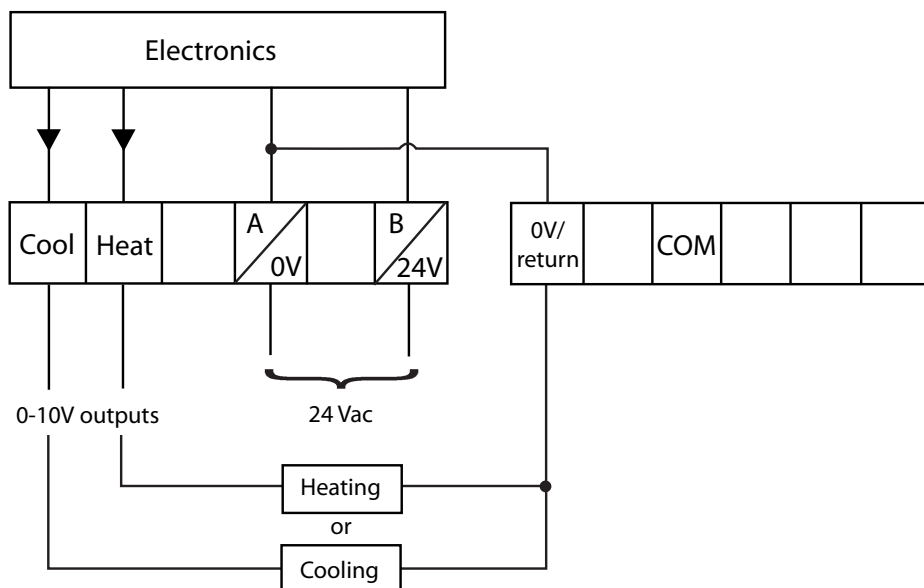


- ❑ Fix at a height of approximately 1.5m from the floor, away from draughts or heat sources such as fan-coil outlets, sunlight or office equipment.



Wiring



Connection Diagram



DIL Switch options, shown in factory set position.

| | | | Sw On |
|---|---------|---|----------|
| 1 | Fan Con |  | Fan Auto |
| 2 | MOT |  | WAX |

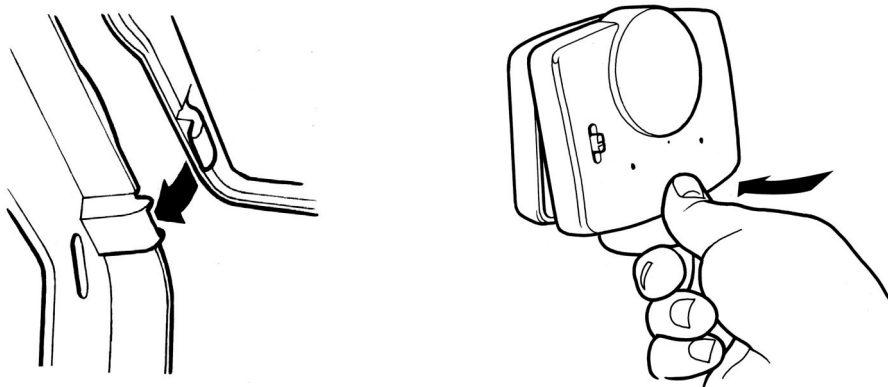
DIL Switch Descriptions

Switch 1: Not used on this model

Switch 2: *MOT* - Motorised valve actuator selection.
WAX - Wax valve actuator selection.

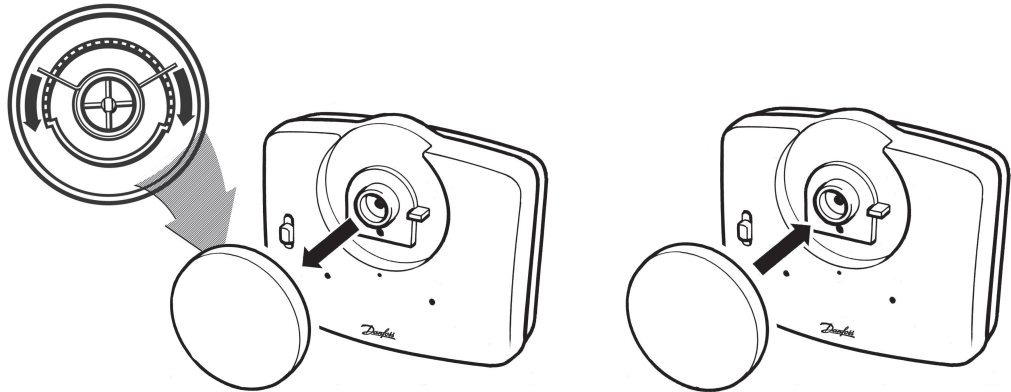
Mounting thermostat to the wallplate

- ❑ To mount the thermostat to the wallplate, align the tabs on the top of the thermostat with the apertures in the wallplate and hinge the thermostat down, pressing firmly to engage the securing clip in the wallplate.



Locking & limiting

- ❑ To lock or limit the setting range turn the setting dial to 3 and remove knob.
- ❑ Position the locking springs on the rear of the dial to the desired position and re-mount the knob ensuring that number 3 on the dial aligns with the reference mark on the case.



User Instructions

Setting the temperature

Turn the setting dial to the required temperature.

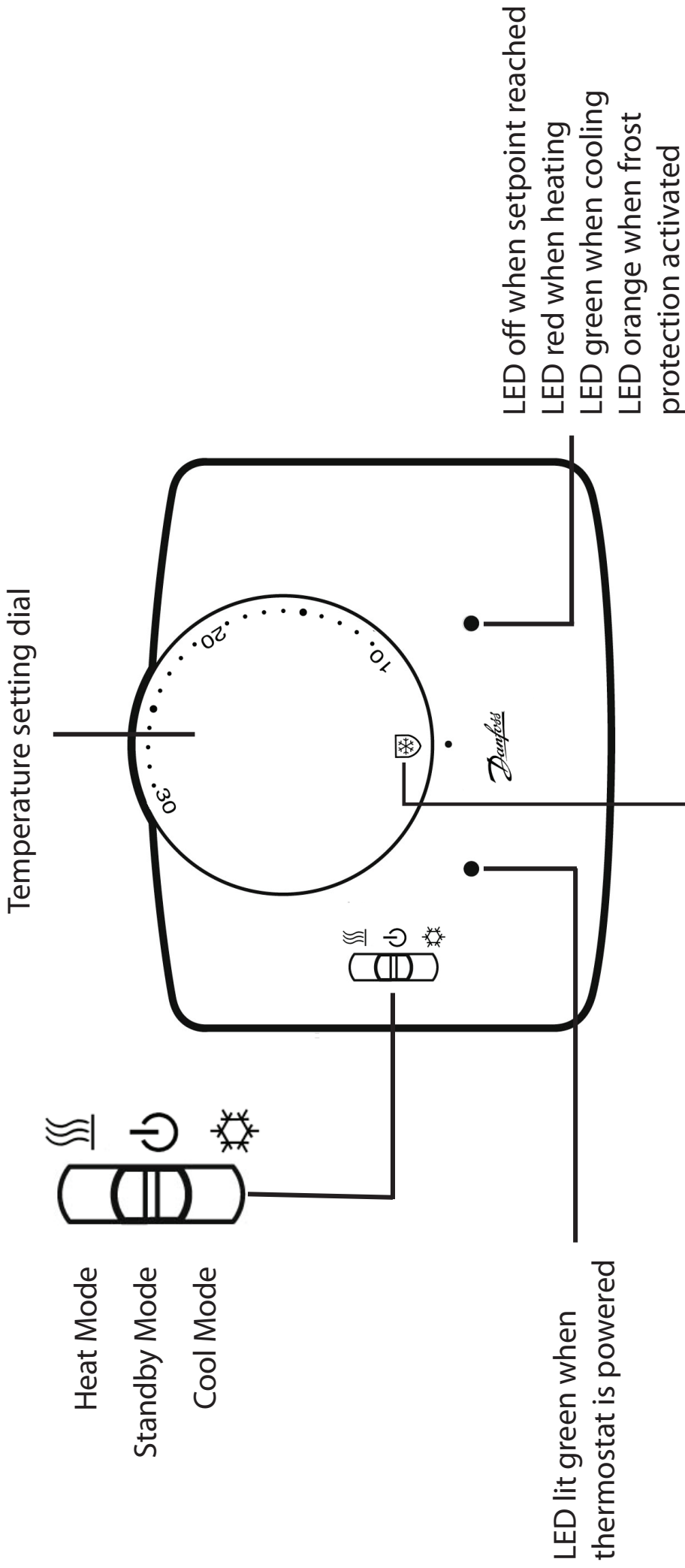
Frost Protection

To activate frost protection, turn the dial below 10°C. Frost protection becomes active at 8°C. If the temperature in the room drops below 8°C then the output will activate.

When frost protection is activated the right LED will turn orange.

Standby Mode

In cooling mode, the standard frost protection is not available; instead there is standby mode. When the dial is turned past 10°C the unit enters standby mode and cooling will be inactive until the dial is turned up past 10°C.



www.danfoss.com/BusinessAreas/Heating

This product complies with the following EC Directives:

Electro-Magnetic Compatibility Directive.

(EMC) (2004/108/EC)

Low Voltage Directive.

(LVD) (2006/95/EC)

