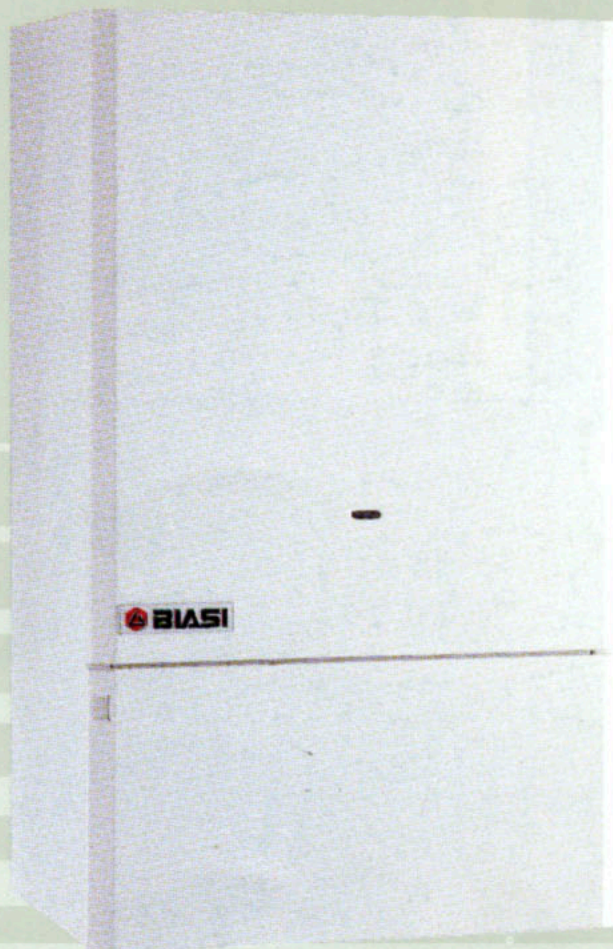
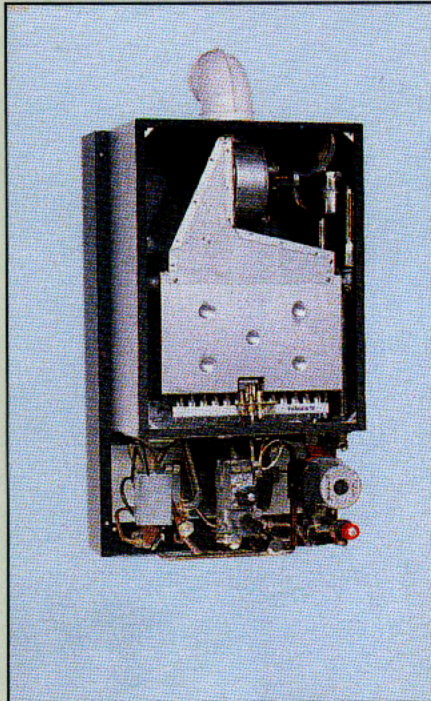


GAS BOILERS



BIASI
TERMOMECCANICA SpA

MVP



Wall mounted, gas-fired, fanned flue, combination boilers incorporating two separate heat exchangers, one for heating and one for hot water.

The heating output can be adjusted accordingly with low or high flame.

The MVP Boiler ensures a maximum of comfort and control whilst ensuring full central heating and hot water control.

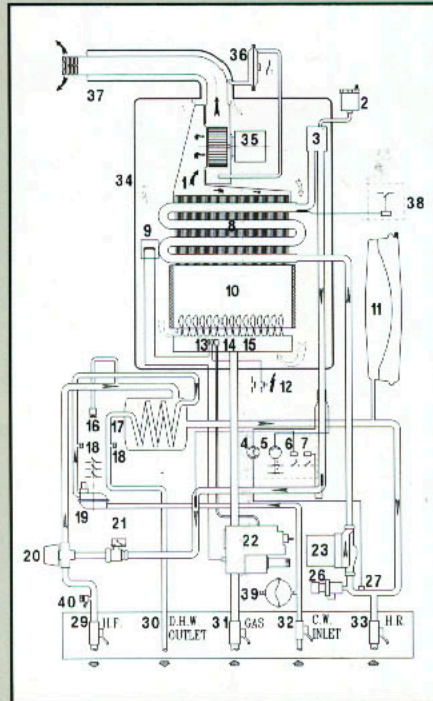
The MVP offers a much simpler and inexpensive installation as it does not require a separate pump, storage cylinder or header tank.

As a room-sealed, fan assisted boiler, it can be fitted almost anywhere - even in a cupboard.

The MVP Boiler is designed specifically to meet the needs of the modern home and will ensure trouble-free operation.

All Boilers come fitted with a time-clock.

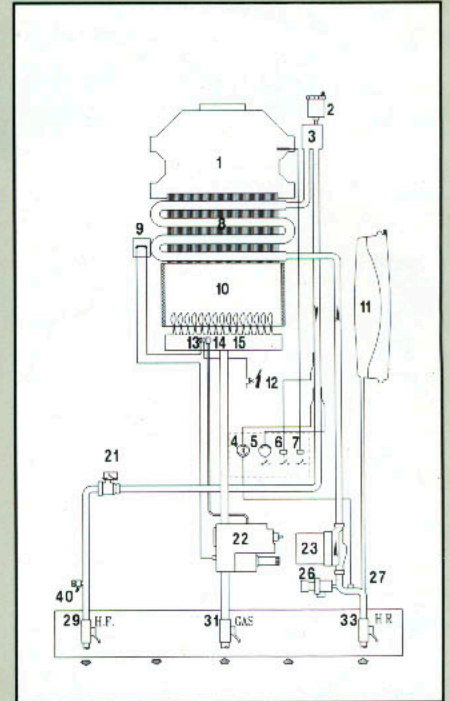
MODEL MVP - Combination (FF)



TECNICAL SPECIFICATION

- **Vertical single** flue hood (1).
- **Water-fumes heat exchanger** made of copper e treated against smoke corrosion (8).
- **Burner** made out of modular elements with stainless steel heads (15).
- **Combustion Chamber**, well insulated with ceramic panels (10).
- **Gas Valve**, which allows pressure adjustment between minimum and maximum of the hot water system independantly from the central heating system (22).
- **Heating flow switch** for failure of water supply or pump (21)
- **Pump-multi speed** and very quiet (23).
- **Safety Valve**, rated at 3 bar on the heating circuit (26).
- **Automatic Air Vent** (2).
- **CH expansion tank** (11).
- **Ignition-Piezoelectric** with permanent pilot (12).

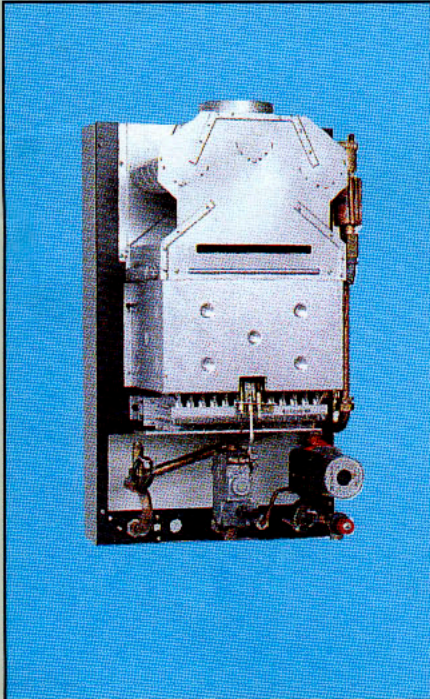
MODEL MG - Heating only



- **Temperature/Pressure gauge** (4).
 - **Thermostats** (5-6-7-9-38).
 - **Gas and Water Connections** (31-32).
- ### Combination Boiler-MVP
- **DHW Heat Exchanger**, consisting of a large surface area copper coil, which guarantees high performance even in hard water areas (17).
 - **Three- way electric** diverting valve and DHW differential pressure switch to favour hot water supply (20).
 - **Timer Clock** allowing the boiler to fire at pre-set times.
 - **Air differential** pressure switch, for the safe operation of the fan, it allows the main burner to ignite only if the air flow is sufficient for a correct combustion.
 - **Fitting template-supplied** with all boilers.
 - **Boiler connections** (29-33).
 - **Fan** is very quiet and efficient to safely discharge all exauast fumes (35 e 37).

MG

BOILER SPECIFICATION



Gas Fired wall mounted boiler, available in two models.

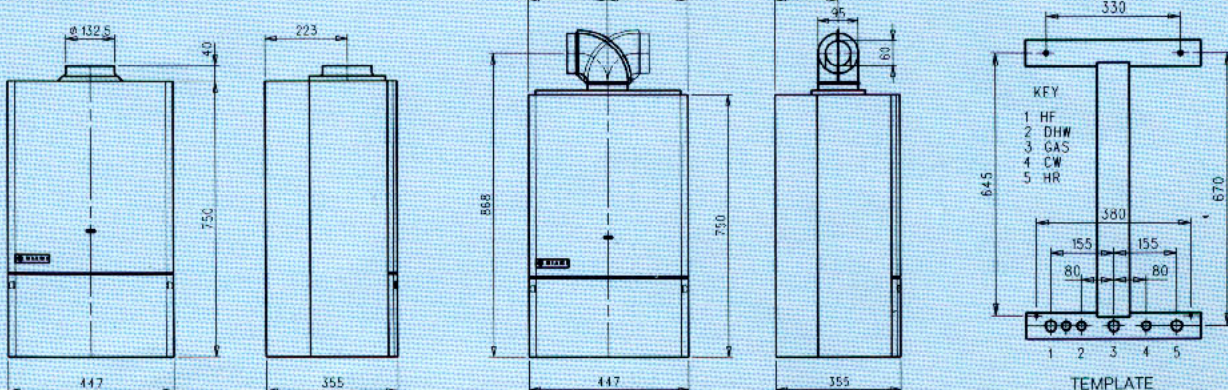
High Quality Components and multiple safety devices and Biasi's simplicity of design ensures greater reliability and a long, trouble free life.

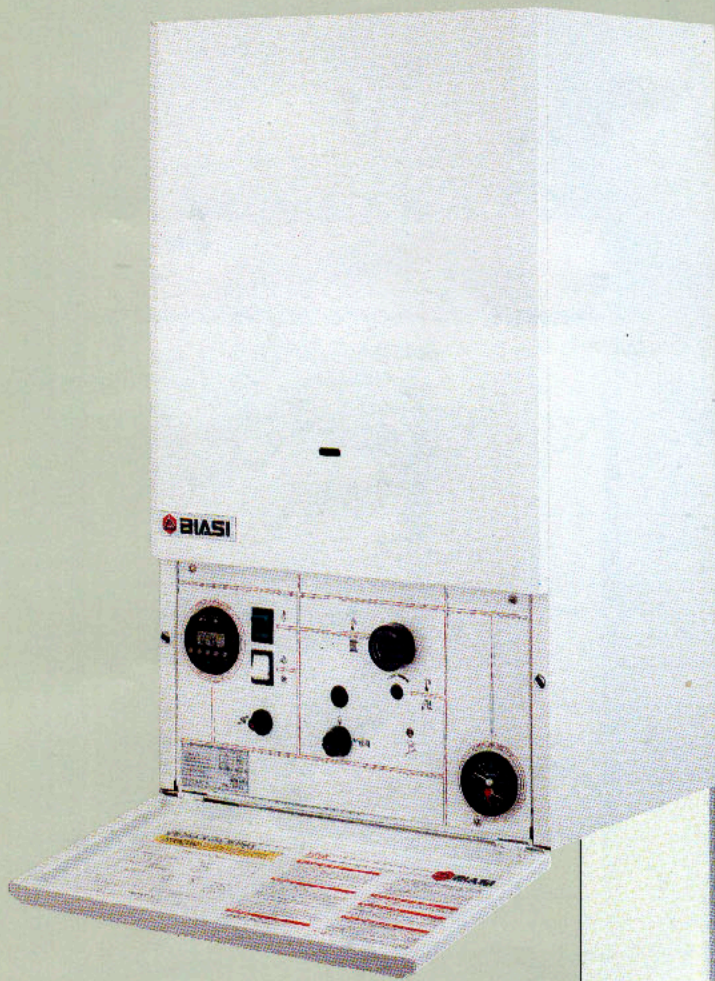
The Boiler does not need the use of a feed and expansion tank as it is already fitted within the Boiler casing.

This makes the MG model very easy to install.

MODEL		MG 47	MG 79	MV P COMBI
HEAT OUTPUT C.H.	kW Btu/h	13,9 47,500	23,3 79,500	23,3 79,500
HEAT OUTPUT D.H.W.	kW Btu/h	-	-	23,3 79,500
DIMENSIONS HEIGHT	mm	750	750	750
WIDTH	mm	447	447	447
DEPTH	mm	350	350	350
HOT WATER FLOW AT Δt 25°C TEMP RISE AT Δt 35°C TEMP RISE	lt/min.	-	-	13,3 9,5
ELECTRICAL SUPPLY		240 V - 50 HZ 3 AMP FUSED	240 V - 50 HZ 3 AMP FUSED	240 V - 50 HZ 3 AMP FUSED
FLUE SIZE		100 mm 4"	100 mm 4"	100 mm 4"
WATER CONNECTIONS D.H.W. C.H.		15 mm 22 mm	15 mm 22 mm	15 mm 22 mm
GAS CONNECTIONS NAT GAS		3/4" BSP	3/4" BSP	3/4" BSP
IGNITION SYSTEM		PIEZOELETRIC WITH PERMANENT PILOT		
WEIGHT	Kg	31	32	42

DIMENSION mm





For an easy,
safe and stylish
installation



The needs of the user installer and service engineer have all been considered in the design of the Biasi wall-mounted gas boilers.

The boilers are easy to install, safe, reliable and extremely efficient. Stylish design and well balanced dimensions make the Biasi boilers extremely easy to match to any type of interior design.

The front access panel, which opens downwards to reveal the user instructions, safely hides away the control panel.

Front access to the internal components including water and electrical connections makes maintenance easy.



BIASI HOUSE
UNIT 41, PLANETARY ROAD INDUSTRIAL ESTATE, NEACHELLS LANE,
WEDNESFIELD, WOLVERHAMPTON WV 13 3XB
Tel. 0902 304304/304400 - Fax: 0902 304321