

# ATAG

*H e a t i n g*

Super high efficiency heating and hot water boilers for every type of home and commercial property.



THE **ECO**LOGICAL CHOICE

# Wake up to Warmth...

WITH **ATAG**, THE ECOLOGICAL CHOICE

- 3 All ATAG Boilers have smooth tube Patented stainless steel heat exchangers for long life efficiency and reliability.
- 3 All ATAG products help to meet the governments Sap 3 & 4 carbon reduction targets.
- 3 All ATAG Boilers achieve 3 BREEAM star points for NOX reduction
- 3 All ATAG products come with extensive flue options: Concentric, Twin and Flexible liner
- 3 All ATAG boilers come with a single condensate safety valve discharge pipe which is KIWA approved.
- 3 All ATAG boilers come with internal Energy Management Systems.

**ATAG**  
Heating



A series



Q series



Q solar





# 'A Series...

RELIABILITY & LOW ENERGY COSTS

"State-of-the-art heat exchanger design, with the finest quality smooth stainless steel tubing, delivers efficiencies up to 98% in heating mode and 95% when delivering hot water, beating everything in this sector."

## Highly efficient

You want to know you are getting the maximum efficiency from your boiler at all times. ATAG 'A' Series boilers are the most efficient on the market - by far. State-of-the-art heat exchanger design, with the finest quality smooth stainless steel tubing, delivers efficiencies up to 98% in heating mode and 95% when delivering hot water, beating everything in this sector.

Plus, with ultra low emissions that meet or exceed all current European standards, you know that when you



install an ATAG boiler, you'll be helping to protect the environment, too.

## Lashings of hot water

'A' Series condensing combination boilers provide boosted hot water outputs and up to 20% higher efficiency than conventional boilers, in hot water mode. That stops your energy costs spiralling, while excellent flow rates - up to 15 litres/min - provides all the hot water you need for a busy, demanding family life.



### **Safety assured**

Safety of operation has always been our most important consideration. All 'A' Series boilers are made of the finest quality materials and are KIWA and Gastec approved. Guaranteed for 5 years you can be assured of years of troublefree safe operation.

### **So simple to control**

Every 'A' Series boiler incorporates an easy to use, 'intelligent' weather dependent energy management centre that ensures that the boiler operates according to your personal lifestyle. All ATAG combination boilers are suitable for use on solar thermal systems.

### **Technically advanced**

Keeping fuel costs to a minimum in days of ever rising energy costs is a 'must have' feature. ATAG's pre-mix burner technology makes a major contribution by allowing seamless modulation from 20 –100% output. Put simply, it reduces gas consumption and minimises running costs. All 'A' Series boilers are SEDBUK 'A' rated and have BREEAM 3 points, the industry's ultimate accolades for high efficiency and low emissions.

### **Prefer a system boiler?**

ATAG 'A' Series system boilers are ideal for installation where there is a hot water cylinder for separate hot water supply, either as part of a new system or for replacing your old boiler. These heat only models incorporate all the energy saving features, reliability and other benefits found in our multiple flu options.

**"All ATAG combination boilers are suitable for use on Solar thermal systems."**

✓ Extensive flue options  
Concentric, Twin and Flexible liner.

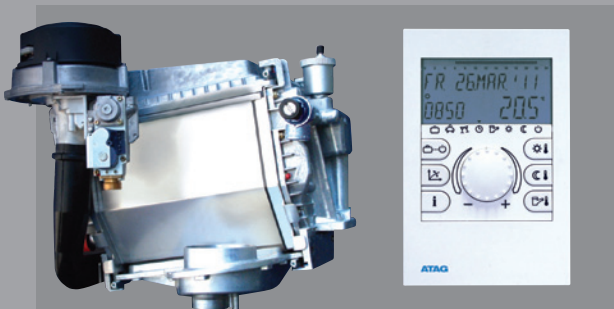
✓ In built gas saver module  
Does not require an additional gas saver unit.  
Saving space and cost

✓ IP44 Rated  
IP44 rated boiler casing which is suitable for zone 2 in a bathroom.

✓ Helps meet carbon reduction targets  
Helps to meet the governments Sap 3 & 4 carbon reduction targets. ( SAP Appendix Q Listed )

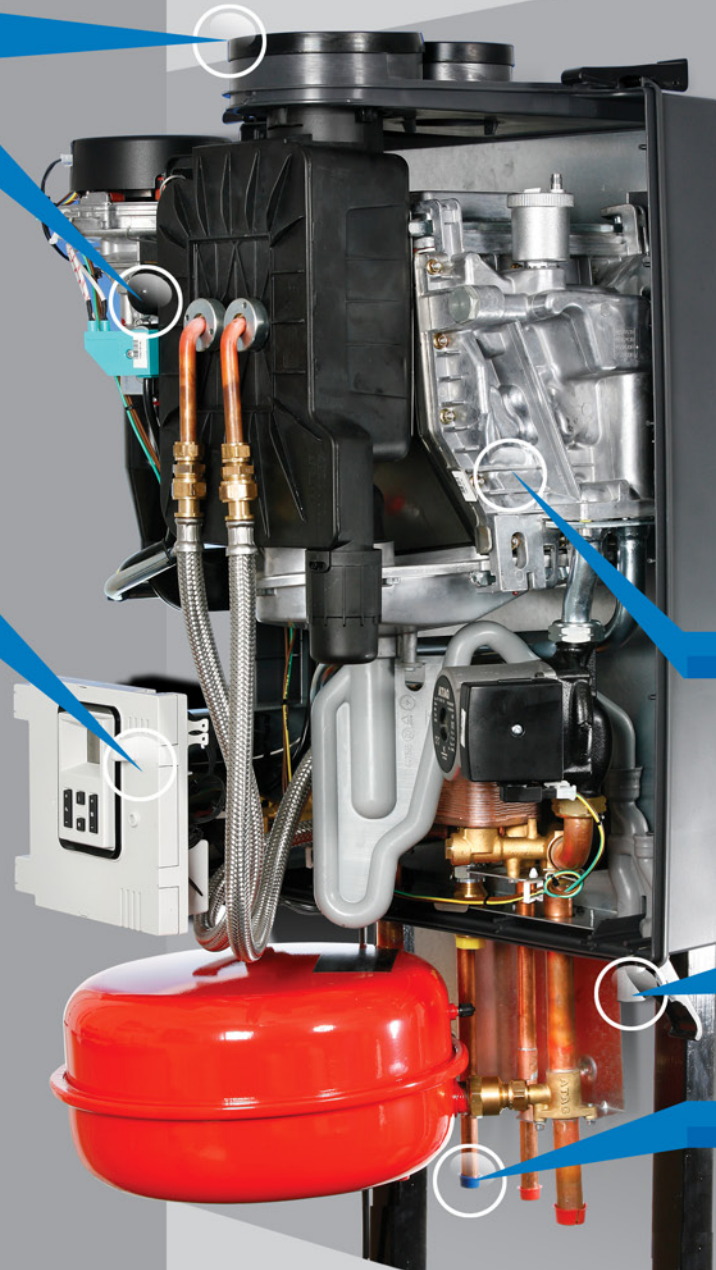
✓ Internal Energy Management System  
Comes with internal Energy Management System and can be connected to a 230V, Volt free or Open Therm supply and is suitable for RF (Radio Frequency) room stats.

✓ Quality assured  
Constructed with Brand A components for ultimate quality assurance.



**Pure innovation**  
State of the art  
heat exchanger design

**Pure Intelligence**  
The Brain'Z'  
Energy Management System



# A325ECX

## TAKING THE LEAD

For the absolute pinnacle of super high efficiency, the A325 ECX meets all the latest Government carbon reduction targets for 'new build' and unlike its many competitors in the market, doesn't require the addition of an unsightly and expensive gas saver unit. This is built-in by ATAG at the factory and comes as standard with this boiler.

### Durability

Has stainless steel heat exchanger for long life efficiency and reliability.

### 5 year Warranty

5 year parts and labour warranty.  
(\*2 years on open vent boiler)

### Single valve discharge pipe

Single condensate and safety valve discharge pipe which is KIWA approved.

### Solar thermal pre-heated hot water

All ATAG Combination Boilers are suitable for solar thermal pre-heated hot water.

# 'Q' Series...

LARGER HOMES & HIGHER HOT WATER DEMANDS

"Like its 'A' Series sibling, the ATAG 'Q' Series exemplifies the latest super high efficiency and low carbon emissions technology, while delivering of outputs and configurations suited to larger properties with a heavier demand on domestic hot water."



## Quality throughout

High quality components, tested thoroughly for their functionality and durability ensure that 'Q' Series boilers always deliver on reliability. So you can rest assured that your boiler will not only maintain high levels of heating and hot water comfort, but also provide years of trouble-free service.

## Fast and plentiful hot water

Combination boilers in the 'Q' Series can supply up to 23.2 litres of hot water at 38°C, on a continuous basis. That means you can fill your bath within 5 minutes or provide a virtual deluge in your mega shower.

## Efficiency that's super high

The 'Q' series takes you into a new realm of efficiency from your gas usage and output, keeping heating bills to a minimum. ATAG's boiler technology is second to none: the result of years of intensive research and development by a leader in the field. Efficiencies up to 110%\* can be obtained, coupled with the lowest emissions in its class.

\*RAL UZ61 efficiency = 110% at 23-26°C

## Under your control

The simple controls on ATAG 'Q' Series boilers ensure they supply heat and hot water, as you want it...and when

you want it. In combination with the new 'Q' series of thermostats, you can gain the maximum benefit from your boiler.

## Working with a brain

The BrainQ digital clock thermostat has an illuminated digital display so that you can read off important information while the status of the ATAG 'Q' can be easily retrieved using a push button and rotating knob.





# Cascade

## Two, three...or more

For larger installations, where heating and hot water requirements exceed 60kW, ATAG have the solution-Cascade. With cascade, multiple boilers are connected to each other enabling outputs to be built up to 500kW

To control the boilers in the optimum way, ATAG has the MADQ Cascade controller that is capable of communicating with each boiler, making it possible for the boilers to modulate equally thus preventing unnecessary switching on and off. It also provides lead boiler rotation.

**ATAG**

# 'Q' Solar Series...

UTILISING THE POWER OF THE SUN

“A major breakthrough in boiler design, the ‘Q’ Solar integrates a central heating boiler and solar powered cylinder into one unit that balances both fuelled hot water and solar energy to power central heating.”

## Here comes the sunny side

Completing ATAG's line-up is the ATAG 'Q' Solar, which as its name suggests, utilises solar energy to deliver both heating and domestic hot water. This is truly the ultimate way of heating, using the power of the sun to cut fuel costs over time, while reducing the environmental impact of boiler emissions to an absolute minimum.

A major breakthrough in boiler design, the 'Q' Solar integrates a central heating boiler and solar powered cylinder into one unit that balances both fuelled hot water and solar energy to power central heating.

Built-in weather dependent controls and outside sensor options add the cutting edge to this energy saving technology, while high quality stainless steel cylinders and coils ensure maximum reliability and product longevity.





Type		200 litre		380 litre	
		Q25SC200N	Q38SC200N	Q25SC380N	Q38SC380N
Input Hs CH	kW	25	38	25	38
Qn Input Hi CH	kW	22,5	34,2	22,5	34,2
Qnw Input Hi DHW		22,5	34,2	22,5	34,2
Efficiency class according BED	%	★★★★	★★★★	★★★★	★★★★
Efficiency according EN677 (36/30°C part load, Hi)	%	109,8	109,6	109,8	109,6
Efficiency according EN677 (80/60°C full load, Hi)	%	97,5	97,4	97,5	97,4
Modulation range CH (capacity 80/60°C)	kW	4.4 - 21.9	6.0 - 33.3	4.4 - 21.9	6.0 - 33.3
Modulation range CH (capacity 50/30°C)	kW	4.9 - 23.9	6.8 - 36.3	4.9 - 23.9	6.8 - 36.3
Nox class EN483				5	
CO <sup>2</sup>	%			9	
Flue gas temp. CH (80/60°C on full load)	°C	68	69	68	69
Flue gas temp. CH (50/30°C on low load)	°C			31	
Gas consumption G20 CH (DHW) (at 1013 mbar/15°C)	m <sup>3</sup> /h	2,38	3,62	2,38	3,62
Electr. power consumption max.	W	106	165	106	165
Electr. power consumption on part load acc. EN677 incl. boiler pump	W	74	74	74	74
Electr. power consumption stand by	W			10	
Current	V/Hz			230/50	
Fuse rating	A			5	
Degree of protection acc. EN 60529				IPX0D	
Weight boiler (empty/filled)	kg	50 / 53,5	53 / 58	50 / 53,5	53 / 58
Weight cylinder (empty/filled)	kg	75 / 275	75 / 275	98 / 478	98 / 478
Weight total (empty/filled)	kg	125 / 328,5	128 / 333	148 / 531,5	151 / 536
Width	mm	510	510	660	660
Height	mm	1880	1880	1860	1860
Depth	mm	895	895	1040	1040
Input Solar part (80/30°C)	kW	8	8	10	10
After run time pump CH	min			5	
After run time pump DHW	min			1	
PMS Water pressure min./max.	bar			1 / 3	
P Operating water pressure / nominal	bar			1 / 3.5	
DHW flow (at 38°C)	l/min	24,1	29,5	30,9	38,9
DHW flow (at 60°C)	l/min	13,5	16,5	17,3	21,8
DHW temperature (Tin=10°C)	°C			60	
Heat up time 15° to 60°C (gas fired)	min		17		19
Reheat time (70% draw off)	min		12		18
DHW Expansion vessel charge pressure	bar			3	
DHW Expansion valve setting	bar			6	
Pressure reducing valve	bar			3.5	
Set opening temperature and pressure of relief valves	K, bar			95 / 7.0	
Pump type boiler	UPER	20-60	20-70	20-60	20-70
Available pump height CH	kPa	32	16	32	16
Pump type solar system		UPR15-60	UPR15-60	UPR15-60	UPR15-60
CE product identification number (PIN)				0063BQ3021	

# ATAG 'A' Series

Type		Combi			Solo		
		A203C	A325C	A325ECX	A200S	A320S	A2005S OV
Input Hs CH	kW	20	32	32	20	32	20
Qn Input Hi CH	kW	18	28.8	28.8	18	28.8	18
Qnw Input Hi DHW	kW	23.4	34,2	34.2			
Efficiency DHW, year	%	83.2	85.9	95.1			
Efficiency class according BED		★★★★	★★★★	★★★★	★★★★	★★★★	★★★★
Efficiency according EN677 (36/30°C part load, Hi)	%	109.2	109.7	109.7	109.2	109.7	109.2
Efficiency according EN677 (80/60°C full load, Hi)	%	97.9	97.9	99.7	97.9	97.9	97.9
Modulation range CH (capacity 80/60°C)	kW	4.4 - 17.7	6.1 - 28.3	6.1 - 28.3	4.4 - 17.7	6.1 - 28.3	4.4 - 17.7
Modulation range CH (capacity 50/30°C)	kW	4.9 - 19.3	6.8 - 30.9	6.8 - 30.9	4.9 - 19.3	6.8 - 30.9	4.9 - 19.3
NOx class EN483		5					
CO <sup>2</sup> / O <sup>2</sup>	%	9 / 4.7					
Temperature class for PP flue		T100					
Appliance type		B23 B33 C13 C33 C43 C53 C63 C83 C93					
Flue gas temp. CH (80/60°C on full load)	°C	68	68	58.7	68	68	68
Flue gas temp. CH (50/30°C on low load)	°C	31	31	30.5	31	31	31
Categories		I12H3P					
Gas consumption G20 CH (DHW) (at 1013 mbar/15°C)	m <sup>3</sup> /h	1.91 (2.48)	3.05 (3.62)	3.05(3.62)	1.91	3.05	1.91
Electr. power consumption max.	W	114	117	117	114	117	34
Electr. power consumption part load	W	86	89	89	86	89	34
Electr. power consumption stand by	W	3.7	3.7	3.7	3.7	3.7	3.7
Current	V/Hz	230 +10% %-15% / 50Hz					
Degree of protection acc. EN 60529		IPX4D (IPX0D for B23 & B33)					
Weight (empty)	kg	37.5	42.5	45.5	34.5	39	30
Width	mm	500	500	500	500	500	500
Height	mm	650	870	870	650	870	650
Depth	mm	395	395	395	395	395	395
Water content CH	L	3.3	4.8	4.8	3.3	4.8	3.3
Water content DHW	L	0.5	0.7	0.7			
Overrun time pump CH	sec	60					
Overrun time pump DHW	sec	20	20	20			
Content expansion vessel	L	8	12	12	8	12	
Pre-charge pressure exp. vessel	bar	0.8	1	1	0.8	1	
PMS Water pressure CH min./max.	bar	1/3					0.05/3
PMW Water pressure DHW min./max.	bar	1/8					
Flow temperature max.	°C	85					90
Pump type	UP	15-50	15-60	15-60	15-50	15-60	
Pump head available	kPa	28	20	20	28	20	
DHW flow (at T = 35°C)	l/min	9.3	14.3	15.0			
DHW flow (at Tout = 28°C)	l/min	11.6	17.9	18.8			
Max. DHW temperature (Tin=10°C)	°C	60	60	60			
CE product identification number (PIN)		0063BT3195					

Type		Combi			Solo			
		Q25C	Q38C	Q51C	Q25S	Q38S	Q51S	Q60S
Input Hs CH	kW	25	38	51	25	38	51	60
Qn Input Hi CH	kW	22.5	34.2	45.9	22.5	34.2	45.9	54
Qnw Input Hi DHW		31.5						
Efficiency class according BED		★★★★	★★★★	★★★★	★★★★	★★★★	★★★★	★★★★
Efficiency according EN677 (36/30°C part load, Hi)	%	109.7	109.1	109.3	109.7	109.1	109.3	109.3
Efficiency according EN677 (80/60°C full load, Hi)	%	97.5	97.4	97.3	97.5	97.4	97.3	97.3
Modulation range CH (capacity 80/60°C)	kW	6.0 - 21.9	6.0 - 33.3	8.8 - 44.7	6.0 - 21.9	6.0 - 33.3	8.8 - 44.7	8.8 - 52.5
Modulation range CH (capacity 50/30°C)	kW	6.8 - 23.9	6.8 - 36.3	9.8 - 48.7	4.9 - 23.9	6.8 - 36.3	9.8 - 48.7	9.8 - 57.3
NOx class EN483		5						
CO <sup>2</sup>	%	9						
Flue gas temp CH (80/60°C on full load)	°C	68	69	70	68	69	70	70
Flue gas temp CH (50/30°C on low load)	°C	31						
Gas consumption G20 CH (DHW) (at 1013 mbar/15°C)	m <sup>3</sup> /h	2.38 (3.33)	3.62	4.86	2.38	3.62	4.86	5.71
Electr. power consumption max.	W	106	165	150	106	165	150	168
Electr. power consumption stand by	W	10						
Current	V/Hz	230/50						
Fuse rating	A	5						
Degree of protection according EN 60529		IPX0D						
Weight (empty)	kg	79	79	89	50	53	64	64
Width	mm	840	840	1000	500	500	660	660
Height	mm	680						
Depth	mm	385						
Water content CH	L	5	5	7	3.5	5	5	7
Water content DHW	L	14	14	14				
After run time pump CH	min	5						
After run time pump DHW	min	1	1	1				
PMS Water pressure min/max.	bar	1/3						
PMW Water pressure DHW max.	bar	8						
Flow temperature max.	°C	85						
Pump type	UPER	20 - 60	20 - 70	20 - 70	20 - 60	20 - 70	20 - 70	20 - 70
Available pump height CH	kPa	29	20		32	22		
Label		SEDBUK A rate						
DHW flow rate (at 38°C)	L/min	13.4	16.6	23.2				
DHW flow rate (at 60°C)	L/min	7.5	9.3	13				
DHW temperature (T <sub>in</sub> =10°C)	°C	60	60	60				
CE product identification number (PIN)	W	0063BQ3021						

# Choose an ATAG Condensing Boiler

It's a **comfortable** decision to make

## ATAG - Just who are we?

Based in Holland, ATAG Heating Group is a world leader in the design and manufacture of high efficiency, low emission, condensing, gas boilers.

Manufactured from the highest quality materials to ensure years of trouble-free use, all ATAG boilers are designed with ease of access to key components for servicing and repairs, should they ever be required.

## Your local installer

ATAG don't just stop at making boilers, we train the people who fit them. With a number of dedicated training facilities across the UK, we ensure that whoever installs your boiler has access all the technical knowledge and expertise to provide a first class job. So, that means heating and hot water just right for you, for many years to come.

THE **ECOLOGICAL** CHOICE



**ATAG**  
Heating



**ATAG Heating UK Limited,**  
Unit 3 Beaver Trade Park, Quarry Lane,  
Chichester, West Sussex PO19 8NY

Tel: **01243 815 770** Fax: 01243 839 596  
Email: [info@atagheating.co.uk](mailto:info@atagheating.co.uk)

Web: [www.atagheating.co.uk](http://www.atagheating.co.uk)

