

CI/SfB	(53.5)	Xh
September 2006		

# ANDREWS MAXxflo

Condensing Water Heaters

CWH30/100, CWH30/200, CWH60/200, CWH90/200,  
CWH120/200, CWH30/300, CWH60/300, CWH90/300, CWH120/300

NATURAL GAS AND LPG

# Specification Sheet

**THE ENERGY MANAGEMENT  
OF WATER HEATING**

**CE WRAS**  
0087  
APPROVED  
PRODUCT



## TECHNICAL DETAILS

Model Reference					
	CWH30/100	CWH30/200 CWH30/300	CWH60/200 CWH60/300	CWH90/200 CWH90/300	CWH120/200 CWH120/300
Input gross H <sub>s</sub>	6.7-31.1 kW	6.7-31.1 kW	13.4-62.2 kW	20.1-93.3 kW	26.8-124.4 kW
Input nett H <sub>i</sub>	6.0-28.0 kW	6.0-28.0 kW	12.0-56.0 kW	18.0-84.0 kW	24.0-112.0 kW
Nominal Output (tank set point = 60°C)	6.5-30.5 kW	6.5-30.5 kW	13.0-61.0 kW	19.5-91.6 kW	26.0-122.1 kW
Natural Gas, G20 gas consumption	2.96 m <sup>3</sup> /h	2.96 m <sup>3</sup> /h	5.93 m <sup>3</sup> /h	8.89 m <sup>3</sup> /h	11.85 m <sup>3</sup> /h
Min. Dynamic Gas supply pressure	20 mbar	20 mbar	20 mbar	20 mbar	20 mbar
Propane, G31 gas consumption	2.18 kg/h	2.18 kg/h	4.35 kg/h	6.53 kg/h	8.71 kg/h
supply pressure	37 mbar	37 mbar	37 mbar	37 mbar	37 mbar
Efficiency (gross)	98.0%	98%	98%	98%	98%
Efficiency (net)	109%	109%	109%	109%	109%
NOx level	25 ppm	25 ppm	25 ppm	25 ppm	25 ppm
NOx level	44 mg/kWh	44 mg/kWh	44 mg/kWh	44 mg/kWh	44 mg/kWh
Noise level •	51dBA	51dBA	51dBA	51dBA	51dBA
Ionisation current – max	6.0 µA	6.0 µA	6.0 µA	6.0 µA	6.0 µA
Ionisation current – min	4.0 µA	4.0 µA	4.0 µA	4.0 µA	4.0 µA
HSI resistance	1.0-1.4 KΩ	1.0-1.4 KΩ	1.0-1.4 KΩ	1.0-1.4 KΩ	1.0-1.4 KΩ
max.recovery thru 50°C	510l/h	510l/h	1020l/h	1530l/h	2040l/h
Time to recover tank through 50°C rise 100 litre capacity	13 mins	n/a	n/a	n/a	n/a
200 litre capacity	n/a	25 mins	13 mins	9 mins	7 mins
300 litre capacity	n/a	38 mins	19 mins	13 mins	10 mins
Flue size (concentric) Internal/External	80/125	80/125	80/125	130/200	130/200
Flue size (conventional)	80	80	80	130	130
Max flue run – room sealed ▲	14	14	12	14	14
Max flue run – conventional ■	50	50	20	50	40
Max flue static pressure	140 Pa	140 Pa	140 Pa	140 Pa	140 Pa
Inlet/outlet connections	1" BSP	1" BSP	1" BSP	1½" BSP	1½" BSP
Return connection	1" BSP	1" BSP	1" BSP	1" BSP	1" BSP
Nominal operating water pressure	3.5 bar	3.5 bar	3.5 bar	3.5 bar	3.5 bar
Maximum water pressure	8.0 bar	8.0 bar	8.0 bar	8.0 bar	8.0 bar
Minimum water pressure	1.0 bar	1.0 bar	1.0 bar	1.0 bar	1.0 bar
Gas connection (gas cock supplied)	¾" BSP	¾" BSP	¾" BSP	¾" BSP	¾" BSP
Electrical supply	230/50V /Hz	230/50V /Hz	230/50V /Hz	230/50V /Hz	230/50V /Hz
Power consumption	170 W	170 W	340 W	510 W	680 W
Weight – empty (100 litre)	145 kg	n/a	n/a	n/a	n/a
Weight – empty (200 litre)	n/a	155 kg	170 kg	185 kg	200 kg
Weight – empty (300 litre)	n/a	165 kg	180 kg	195 kg	210 kg
Weight – full (100 litre)	245kg	n/a	n/a	n/a	n/a
Weight – full (200 litre)	n/a	355 kg	370 kg	385 kg	400 kg
Weight – full (300 litre)	n/a	465 kg	480 kg	495 kg	513 kg
Shipping weight (100 litre)	168 kg	n/a	n/a	n/a	n/a
Shipping weight (200 litre)	n/a	178 kg	193 kg	208 kg	213 kg
Shipping weight (300 litre)	n/a	188 kg	203 kg	218 kg	233 kg
Shipping depth	1040 mm	1040 mm	1040 mm	1040 mm	1040 mm
Shipping width	880 mm	880 mm	880 mm	880 mm	880 mm
Shipping height (100 litre)	1312 mm	n/a	n/a	n/a	n/a
Shipping height (200 litre)	n/a	1653 mm	1653 mm	1653 mm	1653 mm
Shipping height (300 litre)	n/a	2077 mm	2077 mm	2077 mm	2077 mm

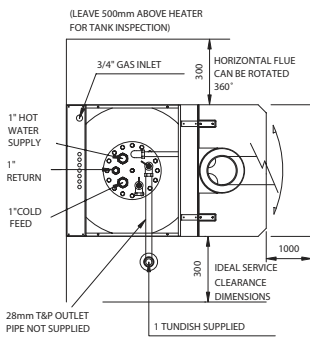
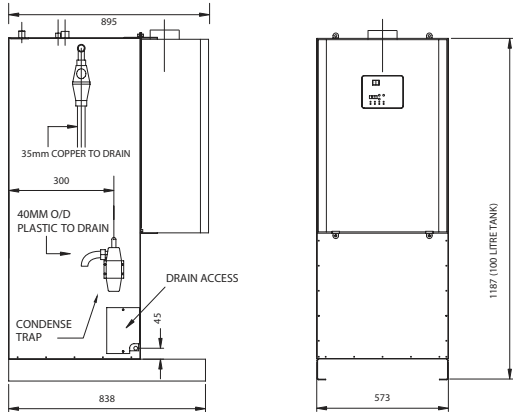
• Noise level measured at 2 m from flue terminal.

▲ Reduce flue length by 1.2 m for 90° bend, 0.7 m for 45° bend and 1.5 m for condense trap.

■ Reduce flue length by 4 m for 90° bend, 2 m for 45° bend and 4 m for condense trap.

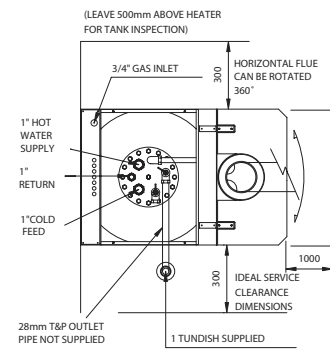
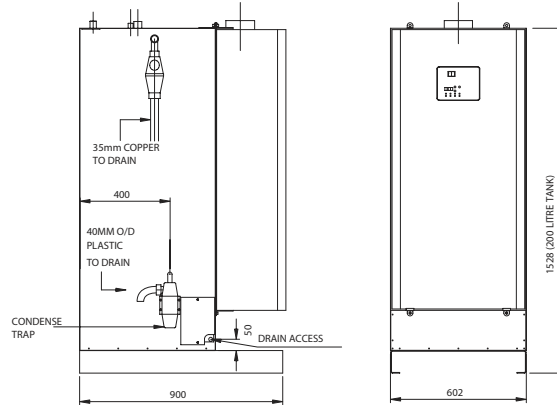
# PRODUCT DIMENSIONS

## Maxxflo CWH30/100

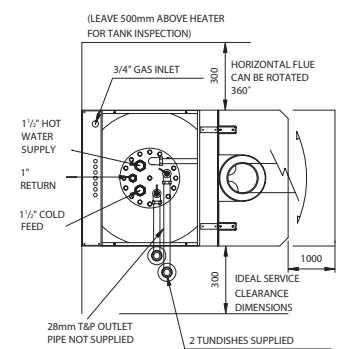


PLAN VIEW MODEL CWH30/100

## Maxxflo CWH30/200, CWH60/200, CWH90/200 & CWH120/200

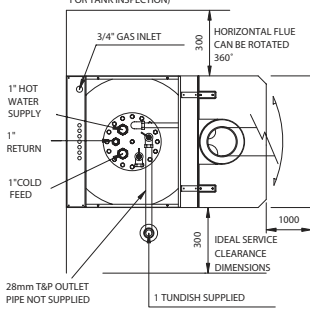
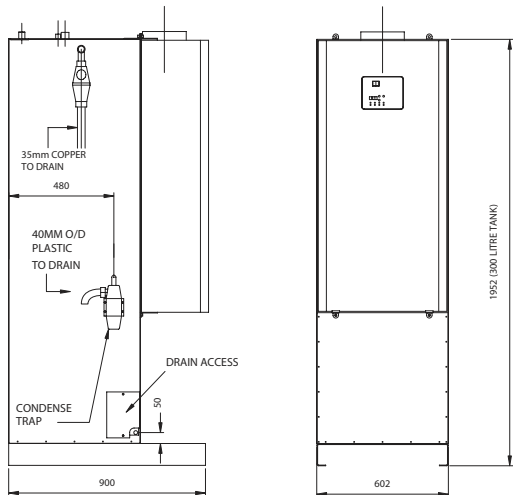


PLAN VIEW MODELS CWH30/200 & 60/200

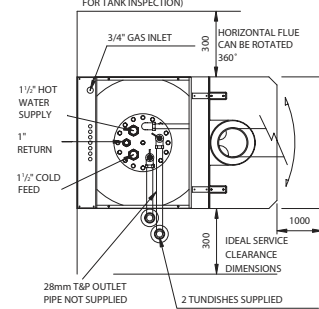


PLAN VIEW MODELS CWH90/200 & 120/200

## Maxxflo CWH30/300, CWH60/300, CWH90/300 & CWH120/300

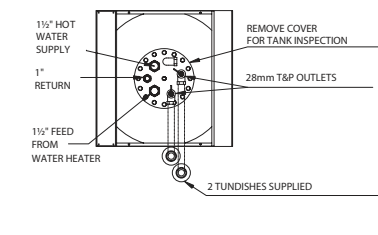
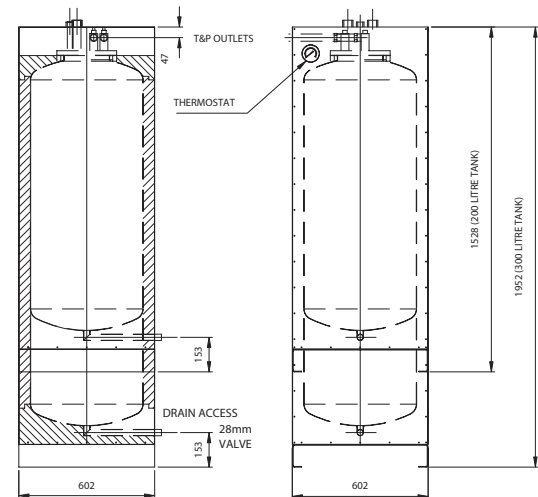


PLAN VIEW MODELS CWH30/300 & 60/300



PLAN VIEW MODELS CWH90/300 & 120/300

## HWST 200 & HWST300 STORAGE TANKS



PLAN VIEW

