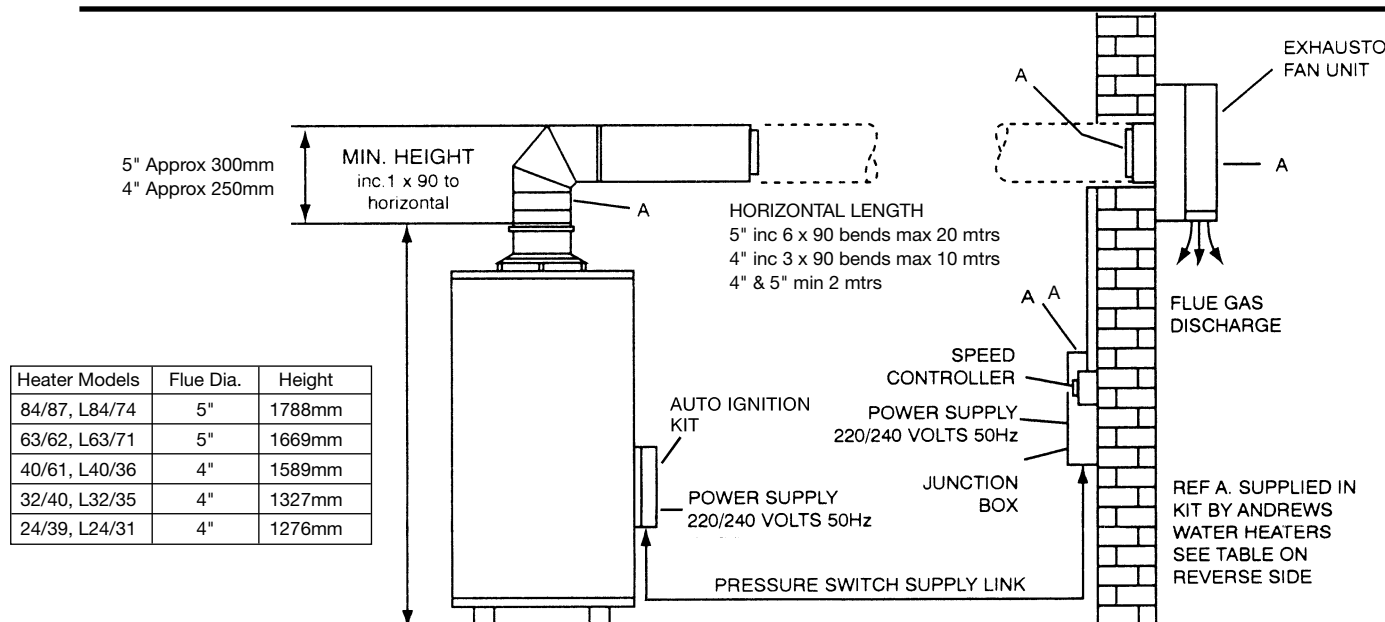


**T/D 047**

## NATURAL GAS AND PROPANE FIRED STORAGE WATER HEATERS

### Typical Installation Standard Range with Exhausto Flue Fan and Automatic Ignition Kit



- The Exhausto Flue Fan when used on Standard Range Water Heaters with the Solenoid Control Kit will give the following control facility.  
The Exhausto Flue Fan will run continuously as long as the power is available.  
The heater thermostat will operate the burner via the Automatic Ignition Kit.
  - The main advantages of this system are to be seen in applications where the lack of height in a plant room or boiler house makes a conventional flue installation inappropriate or inconvenient.  
It should be noted that any increase in the height of flue from the appliance will result in the horizontal length being decreased by the same distance.
- Propane fired equipment must not be installed in a basement or cellar.**
- Greater freedom is gained in siting the appliance and its flue terminal.
  - Removal of the flue products is more positive and less dependent on wind conditions.
  - All Fan-Powered flue systems must conform with the requirements of the appliance manufacturers instructions and BS 5440 1990 Pt. 1.
  - The Exhausto Flue Fan system gives a fail-safe fan-assisted system for open flued gas appliances.  
All gas appliances must be CE-marked.
  - The fan is located on a suitable external wall in a place convenient for the gas appliance and with due regard to requirements for its siting, environmental considerations, future service requirements and current building regulations, BS Standards and any local by-laws that may be in existence.
  - The Exhausto Flue Fan system gives a downward discharge of the flue gases through secure grilles located on the underside of the fan housing.
  - The Exhausto Flue Fan unit is constructed from galvanised sheet metal, fitted with a centrifugal impeller and non moving pressure differential switch, ensuring correct airflow when the appliance is used. The fan unit is supplied with a 3 metre long 6-core heat resistance silicon cable.
  - Low maintenance requirement. It is recommended that the fan and its connections should be inspected once a year at the same time as the annual maintenance of the heating appliance.
  - Low ambient sound pressure level (1 metre). Less than 63dBA at the maximum speed.

#### CAUTION

The Fan Unit must **not** be mounted directly on a timber wall or any other walls of inflammable material.

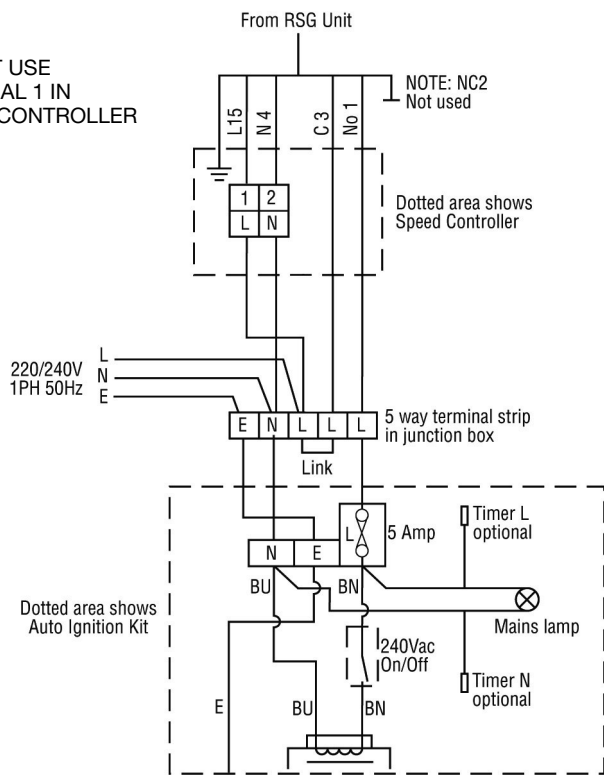
The flue pipe must **not** be in contact with any inflammable material when it is installed in the wall.

When the fan is installed in a timber framed house the recommendations of British Gas Publication DM2 'Guide to Gas Installations in Timber Framed Houses' should be observed.

T  
E  
C  
H  
N  
I  
C  
A  
L  
D  
A  
T  
A  
S  
H  
E  
E  
T

# INSTALLATION INSTRUCTIONS FOR STANDARD RANGE WITH EXHAUSTO FLUE FAN AND AUTO IGNITION KIT

**NOTE**  
DO NOT USE  
TERMINAL 1 IN  
SPEED CONTROLLER



## ELECTRICAL SUPPLY

Wiring External to the water heater must be installed in accordance with the I.E.E. Regulations for the wiring of buildings and to any local regulations that may apply.

The installation is designed to run off 220/240V 1Ph 50Hz supply and the fuse rating is 5 Amp.

The method of connection to the mains electricity supply should facilitate complete electrical isolation of the appliance preferably by use of an unswitched shuttered socket outlet in conjunction with a fused three pin plug both complying with the requirements of BS 1363/A.

Alternatively a fused double pole switch or fused spur box serving only the heater may be used.

The point of connection to the mains should be readily accessible and adjacent to the appliance.

Connect electrical supply to the Terminal Block located in the Junction Box.

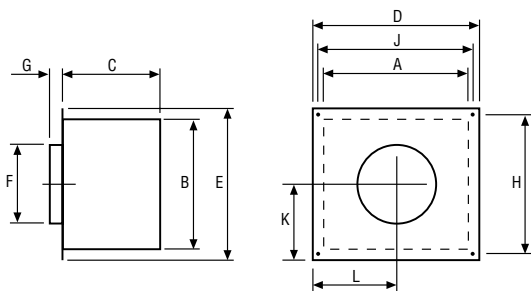
The mains input cable should be 0.75mm<sup>2</sup> 3 core and should be connected to the mains supply as detailed above.

Wiring diagram opposite shows the Terminal Connections for EXHAUSTO FLUE FAN and Automatic Ignition Kit.

## INSTALLATION AND COMMISSIONING INSTRUCTIONS

Full step-by-step instructions are contained in the Exhausto manual supplied with each kit.

## EXHAUSTO FLUE FAN DIMENSIONAL SPECIFICATION



	A	B	C	D	E	F	G	H	J	K	L
RSG125	265	250	220	336	320	Ø121	35	280	296	153	157
RSG150	325	310	240	400	380	Ø146	35	340	360	181	186
RSG200	405	380	275	478	453	Ø196	35	413	438	215	221

## EXHAUSTO FLUE FAN KITS (REF. A)

Each kit comes complete with the following components.

MODELS 84/87 L84/74 63/62 L63/71 B207	
PART NO.	COMPONENT
E034	RSG 125
C946	Speed Controller
C947	Junction Box
E035	Adaptor x 2

MODELS 40/61 L40/36 32/40 L32/35 24/39 L24/31 B251	
PART NO.	COMPONENT
E034	RSG 125
C946	Speed Controller
C947	Junction Box
E591	Adaptor for RSG 125

## NOTE

- It is important to remember that when ordering a flue fan kit the correct heater model is quoted.
- The adaptors supplied will suit Selkirk IL flue systems.
- If using other flue systems alternative adaptors will be required.
- We do not supply additional flue requirements.



Andrews Water Heaters  
Wood Lane, Erdington  
Birmingham B24 9QP  
Telephone: 0845 070 1058 Fax: 0845 070 1059  
E-mail: andrews@andrews-waterheaters.co.uk

Since it is our policy to strive for progressive design and performance all our equipment is subject to