

alfa sprint

# Quietly efficient



The relaxation of a  
hot shower...



...the benefits of  
hydromassage...



...the joy of children  
in the bath.



The **Alfa Sprint** boiler combines high performances in central heating and hot water production with a near-silent operation. The premix (natural gas or propane) burner gives a high output with low emissions. All this coupled with its low water storage volume helps to care for the environment. The **Alfa Sprint**... quietly efficient.



*excellence in hot water*

alfa  
sprint

**TECHNICAL DATA**

Model			ALFA SPRINT S	ALFA SPRINT SV	ALFA SPRINT M	ALFA SPRINT MV
Input		kW	35	35	10/35	10/35
Output		kW	31.2	31.2	9.2/31.2	9.2/31.2
Tank heating surface		m <sup>2</sup>	1.42	1.42	1.42	1.42
Total capacity		litres	103	103	103	103
Primary capacity		litres	60	60	60	60
Dimensions	Height	mm	1404	1404	1404	1404
	Width	mm	542	542	542	542
	Depth	mm	765	765	765	765
Weight empty		kg	159	159	159	159
<b>Domestic Hot Water performance (DHW)</b>			<b>(Operating at 80°C - Cold water at 10°C)</b>			
Peak delivery 40°C		litres/10'	192	192	192	192
Peak delivery 40°C		litres/60'	938	938	938	938

**WHEN  
TO CHOOSE  
THE ALFA  
SPRINT**



The Alfa Sprint is ideal for the needs of the modern family.



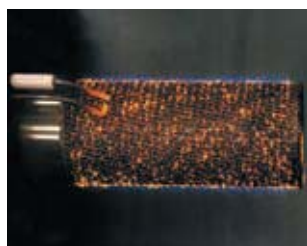
It is ideal when a bath and a shower are taken simultaneously.

Whenever the convenience of a single unit giving both heating and an abundant supply of domestic hot water is needed.

**CHOOSE YOUR LEVEL OF COMFORT**

Model	ALFA S	ALFA SV	ALFA M	ALFA MV
Exclusive Tank-in-Tank design	●	●	●	●
Premix gas burner (S=On/Off M=Modulating)	S	S	M	M
Sealed boiler (balanced or assisted flue connection)		●		●
Several optional heating connection kits available	●	●	●	●
Three optional types of control system available	●	●	●	●

Your installer will advise you on the choice of CH and HW options and fittings or contact ACV



**THE TECHNOLOGY OF  
BG 2000 S AND BG 2000 M BURNERS**

BG 2000 S Low NOx air/gas premix burners are outstanding not only for their eco-friendly design but also for their incredibly silent operation. They are fitted with automatic ignition and an ionisation flame detector. BG 2000 M burners, even more economical, are fitted with an electronic power modulation unit which adjusts the burner output to suit demand.

**TANK-IN-TANK  
THE HEART OF ACV TECHNOLOGY**



**HIGH STRENGTH**

Stainless steel combined with ACV know-how gives the tank exceptional resistance against attack from aggressive water conditions and corrosion.

**AUTO-DESCALING**

The indirect domestic hot water system limits scaling, and by allowing the tank to expand and contract during the heating cycle, the corrugations in the tank walls prevent scale from adhering. This is one of the main advantages of tanks built to the exclusive ACV Tank-in-Tank design.

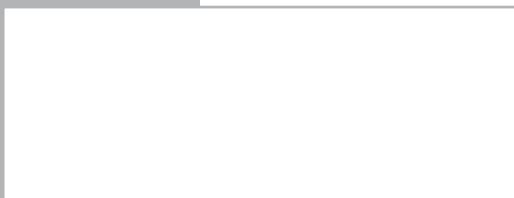
**ANTI-LEGIONELLA**

The large surface of heat exchange on the fully immersed tank maintains the Domestic Hot Water at a minimum uniform temperature of 60°C and so prevents the formation of legionella and the proliferation of all bacteria.

**FAST RECOVERY**

The large surface area of heat exchange on the Tank-in-Tank also means that a large quantity of water can be heated in an exceptionally short time.

STOCKIST



**ACV INTERNATIONAL nv/sa**  
KERKPLEIN, 39  
B-1601 RUISBROEK - BELGIUM  
TEL.: +32 2 334 82 20 - FAX: +32 2 378 16 49  
E-MAIL: international.info@acv-world.com  
www.acv-world.com