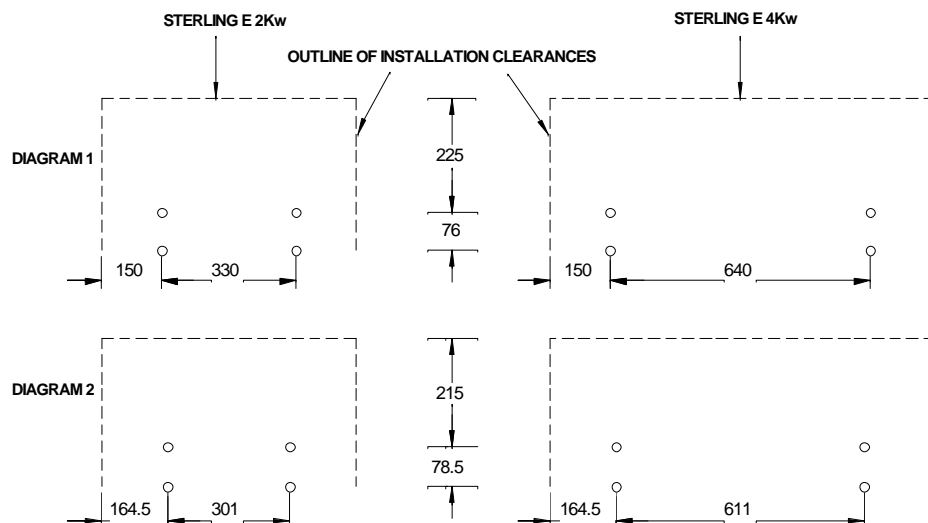


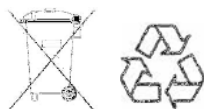
## INSTALLATION DIAGRAMS



All dimensions given are mm.

**NOTE:** The bottom fixing holes must be 2.07 metres (81½") from the floor level to obtain the correct mounting height of the heater appliance.

**IMPORTANT:** A clearance distance of 1.5 metres downwards from the underside of the heater appliance and 1.5 metres outwards from the mounting surface must be maintained for correct operation and air distribution.



*Products with the symbol (crossed out wheellie bin) cannot be disposed as household waste. Old electrical and electronic equipment should be recycled at a facility capable of handling these products and their waste byproducts. Contact your local authority for details in locating a recycling facility nearest to you. Proper recycling and waste disposal will help conserve resources whilst preventing detrimental effects on our health and the environment.*

### Smith's Environmental Products Ltd

Blackall Industrial Estate

South Woodham Ferrers, Chelmsford, Essex. CM3 5UW

Tel: 01245 324900 Fax: 01245 324422 After Sales: 01245 324560

Website: [www.smiths-env.com](http://www.smiths-env.com) E-mail: [sales@smiths-env.com](mailto:sales@smiths-env.com)



# STERLING E 2kW & 4kW INSTALLATION & USER GUIDE



This heater appliance is intended for use as a warm air curtain and is to be mounted on the wall above doorways or along a wall. It is to be mounted with the underside a maximum of 2.1 metres above floor level. It can be mounted directly to a wall surface to provide a near vertically downward air discharge or on angled mounting brackets (supplied) to provide an air discharge angled 25° from downward. If exceeding 3 metres there will be a reduction in performance.

THE STERLING “E” PC (PULL CORD MODEL) SHOULD BE USED IN BATHROOMS OR SIMILAR HIGH HUMIDITY AREAS. DO NOT USE THE STANDARD 2 kW & 4kW.

### INSTALLATION INSTRUCTIONS.

#### Preparation.

- a) Ensure the mounting surface is flat, sound and capable of safely supporting this heater appliance. The surface must not be of a flammable material.
- b) Check for sufficient installation clearances around the appliance to enable correct operation and service access. See Diagram 1 on back page.
- c) Wall fixing points: Screws and wall plugs used must be suitable for the wall type and construction material.
- d) Remove the heater appliance front cover fixing screws (5 on the 2kW model, 7 on the 4kW model). Remove the packaging containing the two angled mounting brackets and four screws. Store the brackets package, the cover and cover fixing screws in a safe place until required. Note: The brackets have four fixing screws included; these are intended only for securing the heater appliance to the brackets.

#### To mount the heater appliance directly to the wall.

- 1) Drill four fixing holes as shown in Diagram 1 on back page according to model type.
- 2) Plug all four holes and apply fixing screws to the top two holes. Leave the underside of the screw heads projecting approx. 10 mm.
- 3) Lift up the heater appliance and hold it with the switches at the bottom, and the mains electrical cable at the top left corner.
- 4) The back panel has two keyhole slots - align and engage these with the two screws in the wall. When the screws are at the top of the slots they are to be tightened, then apply the other two screws in the vacant plain holes 76mm beneath the keyhole slots. Ensure all four screws are fully engaged and secure. Ensure the heater appliance back panel is flat without distortion. If the wall is uneven, add packing behind the fixing points until the heater appliance back panel is flat.
- 5) Replace the front cover and secure with the fixing screws described in d) above. Discard the angled mounting brackets and the associated four fixing screws.

#### To mount the heater appliance on the angled mounting brackets.

- 6) Drill four fixing holes as shown in Diagram 2 on back page, according to model type.
- 7) Plug all four holes and apply fixing screws to the top two holes. Leave the underside of the screw heads projecting approx. 10 mm.
- 8) Note: The brackets are paired left and right hand. Place a bracket via the keyhole slot on each screw with the bracket flanges pointing inwards. When the screws are at the top of the slots, apply the other two screws in the vacant holes 68mm beneath the keyhole slots. Tighten all four screws.
- 9) Locate the four screws for fixing the heater appliance to the brackets, and place one in each of the top screw clips in the brackets. Leave the screw heads projecting approx. 10 mm.

10) Lift up the heater appliance and hold it with the switches at the bottom, and the mains electrical cable at the top left corner.

11) The back panel has two keyhole slots - align and engage the two screws in the mounting brackets. When the screws are at the top of the slots they are to be tightened and then apply the other two screws in the vacant plain holes 68 mm beneath the keyhole slots.

Ensure all four screws are fully engaged and secure. Ensure the heater appliance back panel is flat without distortion. If the wall is uneven, add packing behind the bracket fixing points until the appliance back panel is flat.

12) Replace the front cover and secure with the fixing screws described in d) above.

#### Electrical Connections.

All electrical connections and installations must comply with BS7671, 1992, and the I.E.E. Regulations. Check the voltage stated on the heater appliance is correct for your supply. If in doubt, consult a qualified electrician.

Connect the three core electrical cord to a fused switched spur, fused 10A for the 2kW model. The 4kW model should be wired via a 20 Amp double pole isolation switch back to a dedicated fuse in the main fuse board. As the colours of the wires in the mains lead of this appliance may not correspond with the coloured markings identifying the terminals in your outlet, proceed as follows. The GREEN-AND-YELLOW wire must be connected to the terminal in the outlet marked with letter E or by the Earth symbol  $\perp$  or coloured GREEN or GREEN-AND-YELLOW. The BLUE wire must be connected to the terminal marked with letter N or coloured BLACK. The BROWN wire must be connected to the terminal marked with letter L or coloured RED.

#### Unit Operation.

The three control switches provide the following functions:

		STERLING E 2kW	STERLING E 4kW
Left Switch:	Press the $\Delta$ symbol:	for fan only	for fan only.
Centre Switch:	Press the $\psi$ symbol:	for 1kW heating	for 2kW heating
Right Switch:	Press the $\psi \psi$ symbol:	for 2kW heating	for 4kW heating

**Important:** - For either of the heat settings to operate the Left switch must be operated as described above before the heating functions can operate.

In the event during normal operation this heater appliance should cease to function, proceed as follows:

- i) Check the grille surface areas of the heater appliance are free from obstructions.
- ii) Switch off the heater appliance by depressing the left switch (when the red bar on the switch is no longer visible); alternatively switch off the power supply at the switched spur.
- iii) Wait five minutes minimum and then switch on the heater appliance again.
- iv) If the heater appliance runs momentarily and stops again, isolate it from the electrical power supply and contact the free phone technical helpline 0800 136120.

Room Thermostat Control - CAUTION - DO NOT USE A STANDARD ROOM THERMOSTAT WHEN LOADING EXCEEDS 2kW.

Sterling E 4kW (or two Sterling E 2Kw) - We recommend the Sopac Model No.

TA630.01 Room Thermostat. This item is available from most Plumbers & Heating

Merchants or Phone SOPAC JAEGER CONTROLS:01252 511981.