



Testing, Measuring and Freezing Equipment

Testing Devices for Gas and Water Connections	152 – 155
Testing Devices for Water Connections	156
Testing Pumps	157 – 160
Electronic Testing Pumps	161
Flushing Compressor	162
Water Leak Detectors	163
Decalcifying Pumps	164 – 165
Decalcifying and Boiler Cleaners	166
Gas Leak Detectors	167
Pipe Freezing Systems	168 – 171

5



GER

ROTHENBERGER

Testing Devices for Gas and Water Connections

ROTEST® GW DIGITAL V2.2

Universal digital leak detector



Product Profile

APPLICATION AREA

Testing on gas, water and sewage pipes (using air) according to the prevailing guidelines: DVGW-TRGI G600, TRWI DIN 1988, DIN EN 1610

KEY FEATURES

- 1 Gas pipe testing in accordance with **DVGW-TRGI / Worksheet G600**: Testing load 1 bar, pressure testing 150 mbar, 23 mbar (with gas)
- 2 Water pipe testing in accordance with **DVGW-TRGI DIN 1988**: preliminary test 1 bar, main test 110 mbar
- 3 Sewage pipe testing in accordance with **DIN EN 1610**: Testing pressures are read according to the pipe diameter
- 4 Special testing is possible with the low pressure sensor up to 250 mbar and high pressure sensor up to 20 bar
- 5 Two ports for logging (PC software included)
- Device automatically recognises various sensors with different pressure ranges
- Wide range of accessories for added functionality at any time

TECHNICAL DATA

Initial test with 1.0 bar test pressure. **Main test** with 150 mbar
Leakage test of gas piping as per DVGW-TRGI 2008 and water piping based on TRWI

DVGW-TRGI / worksheet G600/April 2008 conforming

1 Gas pipe test

All needed test period and pressures are included in the software

4 Intelligent Hardware

Automatic recognition of the various sensors and pressure ranges

5 Infrared

1 port for logging



2 Water pipe test

All needed test period and pressures are included in the software

3 Leakage test for sewage pipes as per DIN EN 1610

Enables air test with medium air on dry concrete, moist concrete, clay pipe and using water as medium



Fig. ROTEST® GW DIGITAL V2.2

Robust pressure sensor with pressure range (250 mbar) blue and (20 bar) red, provide reliable information about the prevailing pressure situation in the pipe interior

Self-blocking quick coupler



up to 250 mbar



up to 20 bar

Ideal for measuring with the House Connection Test Set p. 156



Complete with all accessories in practical case



Testing Devices for Gas and Water Connections

Set Components ROTEST® GW DIGITAL V2.2



Set (No. 6.1286) includes: Individual components 1 - 21 for gas, water and waste water pipes, as well as serviceability, plastic case
 Set (No. 6.1285) includes: Individual components 1 - 21 without leakage quantity pump (No. 6.1271) and regulator for gas, water and waste water pipes, plastic case

Model		kg	No.
ROTEST® GW DIGITAL V2.2 Set		4.5	6.1286
ROTEST® GW DIGITAL V2.2 Set (without leakage quantity pump and adaptor for gas-water)		3.8	6.1285

Description	ET	g	No.	Description	ET	g	No.
Basic model V2.2	1	270	6.1287	Cut-off valve for water	12	165	6.1267
Pressure sensor cable 5-pole	2	80	6.1278	Adaptor 1/2"	13	50	6.1265
Low pressure sensor V2.2	3	40	6.1276	Adaptor 1/8"	14	10	6.1270
High pressure sensor V2.2	4	40	6.1277	Adaptor for burner setting	15	20	6.1274
Manual pump	5	200	6.1268	Mains adaptor	16	120	6.1094
Double bellows	6	115	6.1273	PC Cable 2,7 m	17	105	6.1095
Connecting hose	7	195	6.1269	PC Software RoData 2.3	18	20	9.2651
Leakage quantity pump	8	780	6.1271	Operating manual	19	55	9.2637
Adaptor for gas	9	190	6.1263	Padded carrying case	20	1550	6.1272
Adaptor for water	10	160	6.1264	Fine pressure regulator	21	50	6.1284
Cut-off valve for gas	11	155	6.1266	Thermal printer	22	505	6.1052

ACCESSORIES

Description	g	No.	Description	g	No.
Paper roll for thermal printer (4 rolls)	40	6.1043	Gas test plugs, size 0, conical 3/8 - 1/2"	45	35.1273
Block battery 9 V Lithium	35	6.1027	Gas test plugs, size 1, conical 1/2 - 1"	80	35.1274
Rechargeable battery pack	280	6.1206	Gas test plugs, size 2, conical 3/4 - 1 1/4"	125	35.1275
Battery pack recharger	500	6.1207	Gas test plugs, size 3, conical 1 1/4 - 2"	175	35.1276
Adaptor cable USB-RS 232 with installation CD	100	6.1229	Gas test plugs, size 1, cylindrical 3/4"	60	35.1277
Supply end cap	380	35.1279	Gas test plugs, size 2, cylindrical 1"	75	35.1278
Y manifold	415	6.1282	House connection test set (DIN 1610)		6.1350

Testing Devices for Gas and Water Connections

ROTEST® GW 150/4

Universal analogue testing device for gas and water connections using air as the medium



Product Profile

KEY FEATURES

- 1 Corresponds to the measurement precision requirements of DVGW-TRGI Worksheet G600 April 2008 and other national safety regulations
- Extremely long life
- Constant build-up of pressure
- Designed to serve in real-life situations through quick, exact gas pressure measurements

TECHNICAL DATA

For initial test (1,0 bar) and main test (150 mbar) of natural gas fittings
 Low pressure liquid gas fittings (40 - 60 mbar)
 Propane gas fittings (150 mbar)
 Drinking water fittings 3,0 bar / 110 mbar according to DIN 1988 (TRWI)
 Atmospheric blower burners (0 - 30 mbar)

DVGW-TRGI / worksheet G600/April 2008 conforming

5

- 2 Corrosion-resistant stainless steel tank

Extremely long life

- 1 Precisely calibrated components

Corresponds to the measurement precision requirements of DVGW-TRGI G600 and other national safety regulations

- 4 Compact measuring station

Designed to serve in real-life situations through quick, exact gas pressure measurements

- 3 Force pump with check valve

Constant build-up of pressure



No. 6.1040

Testing scale 146.5 - 153.5 mbar, zero point at 150 mbar on transparent extending tube element



Transparent tube element with double o-ring seal



Pressure resistant stainless steel tank and ball valve to isolate the bellows

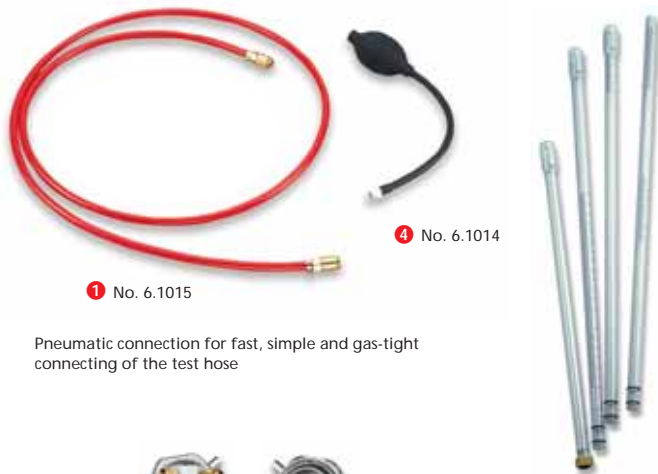


Adjustable scale to set the zero point measurement. Blue liquid for easier reading



Testing Devices for Gas and Water Connections

Set Components ROTEST® GW 150/4



1 No. 6.1015

4 No. 6.1014

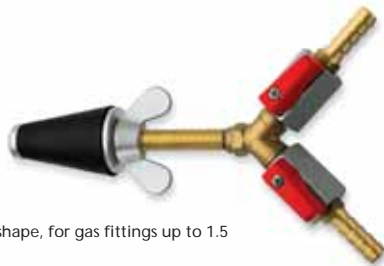
5 No. 6.1013

Pneumatic connection for fast, simple and gas-tight connecting of the test hose



6 No. 6.1041
Front / Rear View

22 No. 35.1231
23 No. 35.1232
24 No. 35.1233



Galvanised steel, conical shape, for gas fittings up to 1.5

25 No. 35.1225
26 No. 35.1226
27 No. 35.1227
28 No. 35.1228



Scope of delivery: Basic device combinations (No. 6.1040/No. 6.1045), force pump 4 bar (No. 6.1001), stainless steel tank, rubber bellow (No. 6.1014), connecting hose (No. 6.1015), tube element 4 piece (No. 6.1013), (No. H9.6500) plus/minus see description, steel carrying case

Model in combination with the basic device	kg	No.
with gas test plugs and supply end cap (with No. 35.1260, No. 35.1261, No. 35.1262, No. 35.1271, No. 35.1272, No. 6.1041)	7.6	6.1040
with 5 gas test plugs, without supply end cap (with No. 35.1260, No. 35.1261, No. 35.1262, No. 35.1271, No. 35.1272, without No. 6.1041)	7.3	6.1045

Description	Parts-No.	kg	No.
Connecting hose	1	130	6.1015
Cut-off valve, gas	2	125	6.1017
Adaptor	3	10	6.1018
Rubber bellow	4	55	6.1014
Tube element, 4 piece	5	120	6.1013
Supply end cap	6	380	6.1041
Seal set	7	40	6.1030
Force pump	8	400	6.1011
Spare manometer R 1/4"	9	75	6.1012
Double nipple for hose connection	10	100	H9.6591
Measurement fluid, blue	11	100	35.1257



14 No. 35.1262



13 No. 35.1261



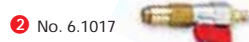
17 No. 35.1272



12 No. 35.1260



16 No. 35.1271



2 No. 6.1017



3 No. 6.1018



22 No. 35.1264

18 No. 35.1220

19 No. 35.1221

20 No. 35.1222

21 No. 35.1223



Gas Test Plug / Adaptor

Suitable for gas lines up to 1.5 bar

Description	Steel exterior Pipe Ø inch	Copper exterior Pipe Ø mm	Parts- No.	g	No.
Conical shape					
Gr. 0	3/8 - 1/2"	12 - 20	12	45	35.1260
Gr. 1	1/2 - 1"	20 - 30	13	80	35.1261
Gr. 2	3/4 - 1.1/4"	25 - 40	14	125	35.1262
Gr. 3	1.1/4 - 2"	35 - 60	15	175	35.1263
Cylindrical shape					
Gr. 1	3/4"	18 - 22	16	60	35.1271
Gr. 2	1"	28 - 30	17	75	35.1272
Conical shape					
Gr. 0	3/8 - 1/2"	12 - 20	18	200	35.1220
Gr. 1	1/2 - 1"	20 - 30	19	300	35.1221
Gr. 2	3/4 - 1.1/4"	25 - 40	20	300	35.1222
Gr. 3	1.1/4 - 2"	35 - 60	21	400	35.1223
Conical shape with 2 ball valves					
Gr. 1	1/2 - 1"	20 - 30	22	260	35.1231
Gr. 2	3/4 - 1.1/4"	25 - 40	23	420	35.1232
Gr. 3	1.1/4 - 2"	35 - 60	24	700	35.1233
Conical shape with 1 ball valve					
Gr. 0	3/8 - 1/2"	12 - 20	25	200	35.1225
Gr. 1	1/2 - 1"	20 - 30	26	350	35.1226
Gr. 2	3/4 - 1.1/4"	25 - 40	27	390	35.1227
Gr. 3	1.1/4 - 2"	35 - 60	28	600	35.1228

Adaptor Cut-off Valve / Double Plug Valve

With double plug valve - with hose snout

Description	Parts-No.	g	No.
Adaptor/cut-off valve with pn. connection	29	140	35.1264
Adaptor/double plug with pn. connection	30	290	35.1265

Testing Devices for Water Connections

House Connection Test Set

Universal leak detector set for underground pipes

Complete system for testing various pipework nominal diameters (only water)



Product Profile

KEY FEATURES

- 1 Flexible and moves easily through bends
- 2 One testing balloon and sealing balloon for the most common diameters
- 3 Easy and better "positioning" of the balloon
- 4 Quick filling of the balloon and pipe system
- Logging of the measured data with the GW DIGITAL V2.2 (optional): Verification of the completed readings according DIN EN 1610

2 Testing balloon and sealing balloon DN 75-150

One testing balloon and sealing balloon for the most common diameters



No. 6.1350 with electric battery-powered pump

1 High quality natural rubber with woven reinforcement

Flexible and moves easily through bends



No. 6.1340 with upright pump

4 Electrical battery-powered pump with pressure gauge

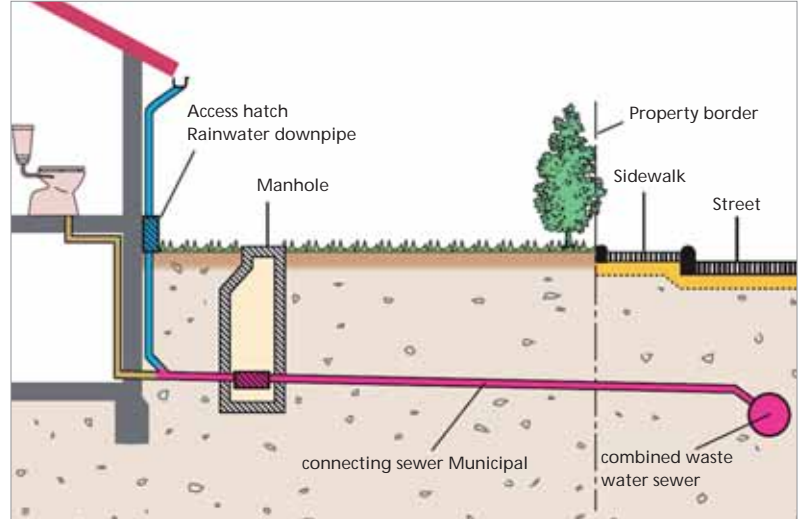
Quick filling of the balloon and pipe system

3 Testing balloon and sealing balloon with aluminium cap

Easier and better "positioning" of the balloon

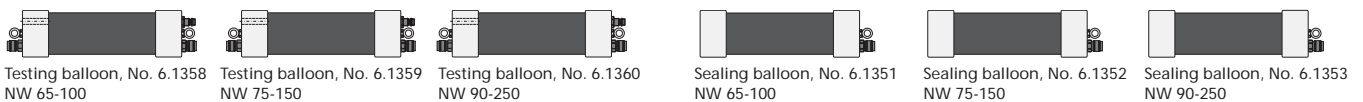


Laying of the sewer



Transition periods until 2015 open up a new business segment for SHK craftsmen. The DIN EN 1610 demands leakage testing of sewage pipes with air or water

balloon sizes included in set (or available optionally):



11-part House Connection Test Set (No. 6.1340) with upright pump includes: sealing balloon NW 75-150 (No. 6.1352), testing balloon NW 75-150 (No. 6.1359), filling hose (No. 6.1365), test valve (No. 6.1365), filling valve (No. 6.1367), slide rod (No. 6.1380), holding rope (No. 6.1368), upright pump with pressure gauge (No. 6.1369), plastic case (No. 6.1370), cover (No. 9.1123), plastic case inlay for upright pump (No. 9.1122)

12-part House Connection Test Set (No. 6.1350) with electric battery-powered pump includes: Sealing balloon (No. 6.1352), testing balloon NW 75-150 (No. 6.1359), filling hose (No. 6.1365), test valve (No. 6.1366), filling valve (No. 6.1367), slide rod (No. 6.1380), holding rope (No. 6.1368), battery pump with pressure gauge (No. 6.1371), accessories for battery pump (No. 6.1377), adaptor for battery pump (No. 6.1341), plastic case (No. 6.1370), cover (No. 9.1123), case inlay for battery-powered pump (No. 9.1121)

Model	kg		No.
House Connection Test Set with upright pump	7.8	1	6.1340
House Connection Test Set (DIN EN 1610) with electrical battery-powered pump	7.8	1	6.1350

Product Profile

TECHNICAL DATA

Testing and pressure range:	0 - 60 bar, with 1 bar steps 0 - 860 psi, with 20 psi steps 0 - 6 MPa, with 0,1 MPa steps
Hub suction capacity:	approx. 45 ml / stroke
Tank capacity:	12 l
Dimensions (L x W x H):	720 x 170 x 260 mm
Weather and cold-resistant tank	

For detailed information see
158

Twin-valve technology

RP 50-S / RP 50-S INOX

Precision testing pumps in monoblock design 0 - 60 bar, with twin-valve technology



Product Profile

TECHNICAL DATA

Testing and pressure range:	0 - 50 bar, with 1 bar steps 0 - 726 psi, with 20 psi steps 0 - 5 MPa, with 0,1 MPa steps
Hub suction capacity:	approx. 45 ml / stroke
Tank capacity:	6.5 l
Dimensions (L x W x H):	700 x 190 x 150 mm
ABS plastic tank	

For detailed information see
159

Twin-valve technology

TP 40-S

Precision testing pumps with double valve system 0 - 50 bar, with twin-valve technology



Product Profile

TECHNICAL DATA

Testing and pressure range:	0 - 30 bar, with 1-bar steps 0 - 440 psi with 20 PSI steps
Hub suction capacity:	16 ml / stroke
Tank capacity:	4.5 l
Dimensions (L x W x H):	440 x 200 x 240 mm
ABS plastic tank	

For detailed information see
160

Single-valve technology

RP 30

Testing pump for quick compression testing, 0 - 30 bar, with single-valve technology and discharge adjustment



Product Profile

TECHNICAL DATA

Testing and pressure range:	0 - 25 bar, with 1-bar steps
Hub suction capacity:	approx. 16 ml / stroke
Tank capacity:	7 l
Dimensions (L x W x H):	380 x 215 x 156 mm

For detailed information see
160

Twin-valve technology

TP 25

Small testing pump for compression testing, 0 - 25 bar, with twin-valve technology



Testing Pumps

RP 50-S / RP 50-S INOX

Precision testing pumps in monoblock design 0 - 60 bar, with twin-valve technology

Product Profile

APPLICATION AREA

For quick and exact compression testing and leak testing on pipework systems and containers in sanitary and heating installations, and in boiler and pressure vessel manufacturing. Ideal for filling of solar systems

KEY FEATURES

- 1 Constant pressure levels and reduction of leak-prone connections with the double valve system (**twin valve**)
- 2 Long stroke for quick filling
- 3 Fill and compression testing in one work session, with water or oil
- 4 Ergonomic rubber grip doubles as carrying handle

KEY FEATURES

- 5 Precise measurement
- 6 5 year rust-free guarantee – Duramant coated
- Drag indicator (displays the maximum, preset pressure)

TECHNICAL DATA

Testing and pressure range: 0 - 60 bar, with 1 bar steps
0 - 860 psi, with 20 psi steps
0 - 6 MPa, with 0,1 MPa steps

Hub suction capacity: approx. 45 ml / stroke

Tank capacity: 12 l

Dimensions (L x W x H): 720 x 170 x 260 mm

Connection: R 1/2"

5



1 Double valve system (twin-valve) in monoblock design

Constant pressure levels and reduction of leak-prone connections

2 High performance

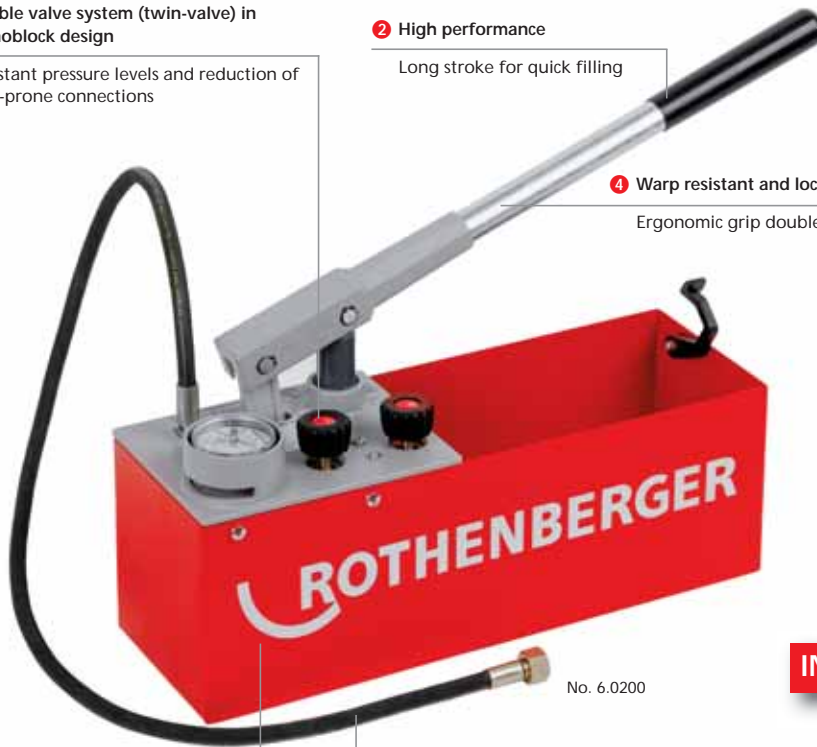
Long stroke for quick filling

3 Saves time

Fill and compression testing in one work session, with water or oil

4 Warp resistant and lockable lever

Ergonomic grip doubles as carrying handle



No. 6.0200



No. 6.0203

Stainless Steel Pump Version enables rust-free storage of the liquid

6 Weather and cold-resistant tank

5 year rust-free guarantee
Duramant coated



5 Test hose with steel reinforced material

Precise measurement

Cut-off valve in monoblock design with valve case



Less effort with the long lever arm



Model	kg	g	No.
RP 50-S Testing Pump	8	1 4	6.0200
RP 50-S INOX (stainless steel) Testing Pump	8	1 4	6.0203

ACCESSORIES

Description	kg	g	No.	Description	kg	g	No.
Extra 16 bar pressure gauge with drag indicator, R 1/4"	100	1	6.1316	Replacement piston	120	1	6.1300
Extra 60 bar pressure gauge with drag indicator, R 1/4"	100	1	6.1315	Maintenance package RP 50-S		1	6.0201
High pressure hose with 1/4" -1/2" connection	490	1	6.1125				

TP 40-S

Precision testing pump with twin-valve system
0 - 50 bar

Product Profile

KEY FEATURES

- 1 Constant pressure levels and reduction of leak-prone connections with the double valve system (**twin valve**)
- 1 Eases pressure discharge through the second valve
- 2 Easy transport and perfect balance with recessed grip
- 3 Anti-slip valve knobs, no confusion as knobs are clearly marked
- 4 Helps avoid spots from splash water
- 5 Shock and corrosion resistant
- 6 With bar, psi and Pascal scale and drag indicator (display of the maximum, preset pressure)

TECHNICAL DATA

Testing and pressure range: 0 - 50 bar with 1 bar steps
0 - 726 psi with 20 psi steps
0 - 5 MPa with 0,1 MPa steps

Hub suction capacity: approx. 45 ml / stroke

Tank capacity: 6,5 l

Dimensions (L x W x H): 700 x 190 x 150 mm

Connection: R 1/2"



Less effort with the long lever arm



Perfect balance with the recessed grip (easy transport)



Model	Pressure range	kg	cm	No.
TP 40-S Testing Pump	up to 50 bar	5.5	1 4	6.0220
Maintenance package TP 40-S			1	6.0221

Testing Pumps



ABS plastic tank

Shock-resistant and non-breakable

Single-valve system

Simple use



5



Model	Pressure range	kg		No.
RP 30 Testing Pump	up to 30 bar	4,5	1 4	6.1130
ACCESSORIES				
Replacement piston			274	6.1138
Test hose			374	6.1125
Maintenance package			274	6.1160

RP 30

Testing pump for quick compression testing, 0 - 30 bar

For leak testing of smaller pipework systems and tanks in sanitary and heating installation

KEY FEATURES

- Easy to use with the single-valve system
- Better adjustment with the drain valve
- Ideal for confined spaces
- No false readings from any bulging of the hose (steel reinforced test hose)

TECHNICAL DATA

Testing and pressure range: 0 - 30 bar, with 1-bar steps
0 - 440 psi with 20 PSI steps

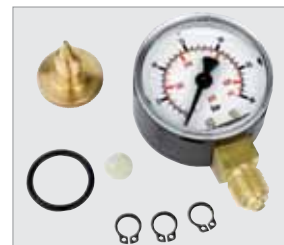
Hub suction capacity: 16 ml / stroke

Tank capacity: 4,5 l

Dimensions (L x W x H): 440 x 200 x 240 mm

Connection: R 1/2"

No. 6.1160



Double-valve system in monoblock design

Constant pressure levels and reduction of leak-prone connections



Model	Pressure range	kg		No.
TP 25 Testing Pump	up to 25 bar	4.6	1 4	6.0250
Maintenance package TP 25			1	6.0251

TP 25

Small testing pump for compression testing, 0 - 25 bar

KEY FEATURES

- Constant pressure levels and reduction of leak-prone connections with the double valve system (**twin valve**)
- Non-slip with the working grip
- Ideal for confined spaces with its compact design
- Weather and cold-resistant tank with Duramant-epoxy -coating (**5 year guarantee**)

TECHNICAL DATA

Testing and pressure range: 0 - 25 bar

Hub suction capacity: approx. 16 ml / stroke

Tank capacity: 7 l

Dimensions (L x W x H): 380 x 215 x 156 mm

Connection: R 1/2"



Integrated pressure gauge

Maintenance package TP 25



RP PRO II

Self-priming electrical testing pump



Product Profile
APPLICATION AREA
Compression testing of pipework systems and containers in sanitary and heating installations, compressed air, steam, and cooling systems, solar systems, hydraulic systems, sprinkler systems and for boiler and pressure vessel manufacture
KEY FEATURES
<ol style="list-style-type: none"> 1 Effective filling of piping or containers 2 Compression testing occurs within desired pressure range 3 Self-priming liquid supply or from a pressure source possible

TECHNICAL DATA	
Testing and pressure range:	0 - 40 bar with 1 bar steps 0 - 570 psi with 20 psi steps 0 - 0,1 MPa steps
Suction capacity:	8 l / min
Dimensions (L x W x H):	360 x 300 x 295 mm
Connection:	R 1/2"
Voltage:	200 - 240 V / 50 HZ and 110 V / 50 - 60 HZ
Power:	1.6 kW

Compact design

Stable plastic casing

3 Self-priming

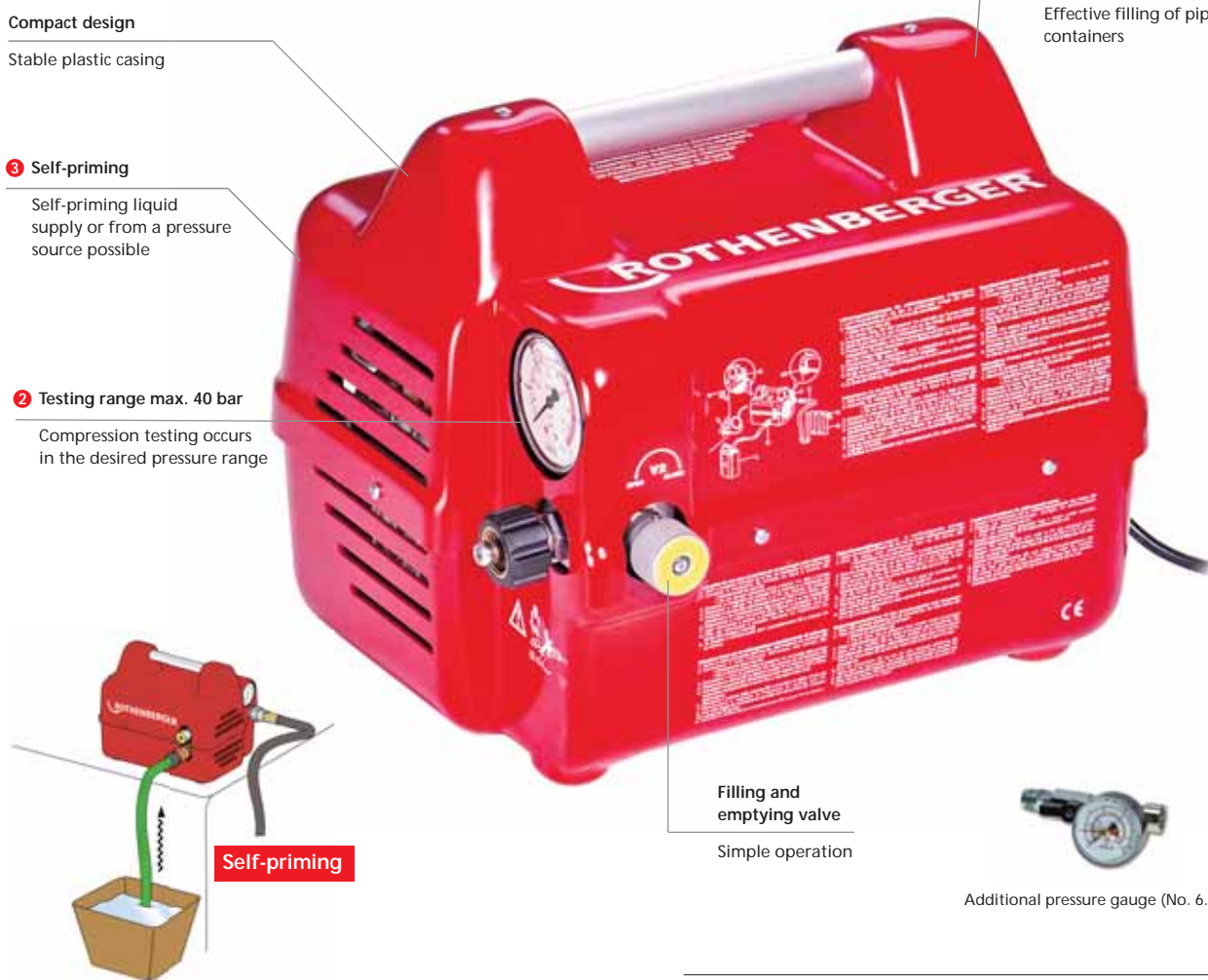
Self-priming liquid supply or from a pressure source possible

2 Testing range max. 40 bar

Compression testing occurs in the desired pressure range

1 High delivery volumes of 8 l / m

Effective filling of piping or containers



Filling and emptying valve

Simple operation

Additional pressure gauge (No. 6.1009)

Filling hose with adaptor (No. 6.1001)



High pressure hose with R 1/2" connection, Reduction of measuring errors (No. 6.1002)



Model	kg	No.
RP PROII Testing Pump, self-priming (230 V) with power cord, high pressure test hose 2 m and 1/2" connections, filling hose	13.4	6.1180
RP PROII Testing Pump, self-priming (110 V) with power cord, high pressure test hose 2 m and 1/2" connections, filling hose	13.4	6.1181
ACCESSORIES		
Filling hose with adaptor	535	6.1001
Test hose with R 1/2" connection	390	6.1002
Adaptor for filling hose	35	6.1007
Finely scalable extra pressure gauge	750	6.1009

Flushing Compressor

ROPULS Flushing Compressor

For flushing of drinking water pipes through pulsed compressed air/water mixture



Product Profile

KEY FEATURES

- Ideal for cleansing of floor heating systems
- Compact and sturdy design enables maintenance-friendly, simple operation with the practical carriage
- ① Clear control panel
- ② Removal of rust and other deposits
- ③ Clean, fully hygienic cleaning of drinking water pipes
- ④ Completely oil and water-free air supply

TECHNICAL DATA

Pipe connection: R 1" GK coupling
Max. cable distance: 100 m

TECHNICAL DATA

Max. Pipe diameter: 2"
Max. Flow rate: 5 m³ / h
Max. Water pressure: 7 bar
Max. Water temperature: 30 °C
Protection class: IP 54 Micro-Filter
Oil separation rate: 99.9%
Particle retention rate: 0.3 µm Compressor
Volume flow (suction): 200 l / min
Max. Working pressure: 8 bar (116 PSI)
Tank capacity: 10 l
Motor strength: 1.5 kW
Mains connection: 230 V - 50 / 60 Hz
Dimensions (H x W x D): 630 x 380 x 340 mm

5



- ① Large LED display for flow rate and feed impulse, sealed plastic film with program buttons

Clear control panel

- ② Flushing of drinking water lines through pulsing compressed air/water mix as per DIN 1988

Gentle and thorough removal of rust and other deposits

- ③ Dissolving and flushing out building material residue prior to commissioning

Clean, fully hygienic cleaning of drinking water pipes

- ④ Compressor can also be used for pneumatically driven tools

Completely oil and water-free air supply

Quick-coupling NW 7.2

Simple flushing of pipelines



Cleaning of floor heating



Ideal for cleansing of floor heating systems

Model	kg	No.
ROPULS Flushing Compressor with hoses	28	6.0100

ROLEAK Aqua

Acoustic leak detection device for pipeline systems



Product Profile

KEY FEATURES

- The ROLEAK Aqua is designed for the interior zone, it can also be used for leaks in the exterior zone (as a ground microphone)
- 1 Leak detection possible even in the dark
- 2 The ROLEAK Aqua increases flow sound and enables leaks to be pinpointed
- 3 Wireless transmission of the signal to headphones over 20m
- 4 Also for use as a ground microphone
- 5 Optical and acoustic display
- 6 Leak detection possible even in the dark

TECHNICAL DATA

Leak status:	LED display
Resolution:	0 - 10 noise levels
Battery requirement:	ROLEAK Aqua: 2 x 1,5 V AA
Battery requirement head phones:	2 x 105 V AAA
Filter:	3 fixed filter adjustments (low, broadband, high)
Frequency range:	0 - 4 kHz
Transmission range:	up to 20 m
Radio frequency:	864 MHz (device and headphones)
Dimensions (L x W x H):	114 mm x 35 mm x 25 mm
Operating time:	approx. 50 h

6 Integrated LED lamp

Leak detection possible even in the dark

1 Use of different adaptors

Leak detection on various pipe materials and dimensions

5 10 sound increments

Optical and acoustic display

4 Adjustable frequency

Also for use as a ground microphone

2 Sound sensitive microphone

The ROLEAK Aqua increases flow sound and enables leaks to be pinpointed

3 Wireless technology

Wireless transmission of the signal to headphones over 20 m



Fig. ROLEAK Aqua Set

Simple operation with the tripod adaptor for indoor and outdoor use



Wireless transmission to headphones



6-part set (No. 6.6090) includes: Basic Device (No. 6.6091), headphones (No. 6.6092), magnet adaptor (No. 6.6094), extension bar (No. 6.6093), pipe adaptor (No. 6.6097) and tripod adaptor (No. 6.6096), plastic carrying case (No. 6.6095)

Model	kg	No.	Model	g	No.
ROLEAK Aqua Set	1.4	6.6090	ROLEAK Aqua Basic Device	245	6.6091

ACCESSORIES

Description	kg	No.	Description	g	No.
Headphones	185	6.6092	Extension bar	50	6.6093
Magnet adaptor	25	6.6094	Tripod adaptor	100	6.6096
Pipe adaptor	10	6.6097	Carrying case with inlay	925	6.6095

Decalcifying Pumps

ROMATIC 20

Decalcification pump with automatic flow direction and programmable time interval



Product Profile

APPLICATION AREA

Intended for use by strong calcifications and encrustations for systems up to 300 l

KEY FEATURES

- 1 Easy and quick dissolution of lime scale deposits
- 2 Quick filling and emptying
- 3 Faster and more effective decalcifications

TECHNICAL DATA

Pump strength:	40 l / min.
Working pressure:	1,3 bar
Delivery height:	10 m
Tank capacity:	15 l
Motor strength:	150 Watt
Mains connection:	230 V 50 / 60 Hz

1 Automatic flow direction reversal

Easy and quick dissolution of lime scale deposits

2 High performance pump

Quick filling and emptying, high flow rate for decalcifying liquid

Automatic, up to 300 l

3 Liquid temperature up to 50 °C

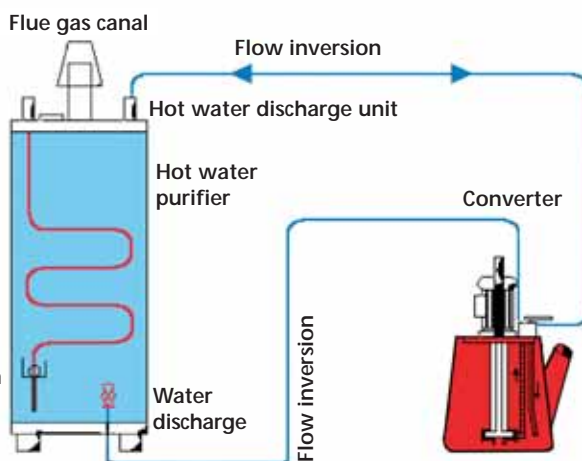
Faster and more effective decalcifications



Programmable overall time and interval for flow direction reversal (ROMATIC 20)

Simple handling and execution of decalcification

Model	kg	cm	No.
ROMATIC 20	6	1	6.1190
Decalcification concentrate on	166		



ROCAL System

ROCAL Decalcifying Pumps

Reduces energy costs

For quick and effective decalcification of water heaters, boilers heat exchangers, cooling systems and more. Decalcifying chemicals offered optionally for effective decalcification.

Before



After



ROCAL 20

Decalcification pump with manual, adjustable flow direction



Product Profile

APPLICATION AREA

Manual decalcification pump. Intended for normal calcification for systems up to 300 l

TECHNICAL DATA

Pump strength:	40 l / min.
Working pressure:	1.3 bar
Delivery height:	10 m
Tank capacity:	15 l
Motor strength:	150 Watt
Mains connection:	230 V 50 / 60 Hz



Manual, up to 300l



5



Model	kg		No.
ROCAL 20	6	1	6.1100
Decalcification concentrate on 166			

ROCALPOWER FLUSHER

Decalcification and filling pump with adjustable flow direction



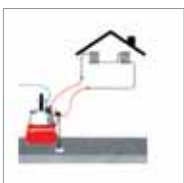
Product Profile

APPLICATION AREA

● For quick filling and emptying of large systems from 300 l up to approx. 1000 l

TECHNICAL DATA

Pump strength:	50 l / min.
Working pressure:	2 bar
Delivery height:	20 m
Tank capacity:	24 l
Motor strength:	270 Watt
Mains connection:	230 V 50 / 60 Hz



Manual, 300 - 1000l



Model	kg		No.
ROCALPOWER FLUSHER	11	1	6.1197
Decalcification concentrate on 166			

Decalcifying and Boiler Cleaners

ROCAL Chemicals

Decalcification concentrate for copper and steel

Product Profile

KEY FEATURES

- Non-foaming
- With corrosion protection
- Increases pump service life

TECHNICAL DATA

Use: The chemicals change colour with use. Active product is red, used product is yellow-orange

Dilution: 10% to 30% in water

After the decalcification, remnant acid in the pipe system can be removed with ROTHENBERGER neutraliser. The mix ratio is 3% in water.



No. 6.1115



No. 6.1120



No. 6.1105



No. 6.1106



No. 6.1110

5

Model	kg			No.	Model	kg			No.
Neutraliser powder	1	1	5	6.1115	Decalcifying concentrate	10	1	2	6.1106
Neutraliser powder	10	1	2	6.1120	Decalcifying concentrate	30	1		6.1110
Decalcifying concentrate	5	1	4	6.1105					

ROCLEAN®

Heavy-duty pumps

The ideal sprayer for boiler cleaning, universally applicable for clean, economical and safe work

Set (No. 6.1000X) includes: High-performance pump, individual components 1 – 3

Model	Parts-No.	g	No.
ROCLEAN® manual pump complete:		3600	6.1000X
Spray hose, 2 m	1	140	6.0985
Spray pipe, straight, 500 mm	2	100	6.0986
Spray pipe, curved, 500 mm	3	100	6.0987
Spray nozzle		10	6.0990
Spare seal set		10	6.0998

TECHNICAL DATA

High pressure pump made of plastic and corrosion-proof

Pump piston with O-ring seal

Pressure gauge Ø 35 mm with scale 0 - 3 bar, drain valve

Dimensions (H x Ø):
530 x 210 mm



ROCLEAN® F3X

Boiler cleaner

With corrosion protection for total cleaning and maintenance of furnaces, dissolves non-burnable remains like rust in seconds up to a wall thickness of 1.2 mm with a residence time of 5 min.

After use, the energy consumption is reduced by approx. 30%

Model	Contents	kg		No.
Canister	5 litre	5.2	1 4	6.1005

Mix ratio of concentrate/water:

1:20 = for normal soiling

1:15 = for strong soiling

1:10 = for very strong soiling



ROTEST® Electronic 3

Gas leak detection device

For detection of gas in rooms, as well as leaks in pipes with the methane gas sensor

Product Profile

TECHNICAL DATA

Optical battery level display

Optical and acoustic display

Standard 9 V square battery

Processor controlled

Detects all gases with a CH₄ basis (methane, acetone, butane propane and natural gas)

LED display of the gas concentration up to 1 Vol. %

Adjustable measurement sensitivity

Finds leaks easily

Finds leaks easily



Illuminated sensor head

Leak detection possible even in the dark



Flexible gooseneck 420 mm

Easily reaches into hard-to-reach places

Soft case shell

Increased protection of the device



Fig. ROTEST® Electronic 3 Set

Set (No. 6.6080) includes: ROTEST® Electronic 3, 9 V battery, plastic carrying case (No. 6.6085)

Model	kg	No.
ROTEST® Electronic 3 in plastic carrying case	1.5	6.6080

ACCESSORIES

Description	g	No.	Description	g	No.
Sensor	20	6.6086	Plastic carrying case	250	6.6085
Sensor cover	10	6.6087			

ROTEST®

Leak detection spray

Ideal for testing of gas lines, also for use in cooling technology. Neutral against the most common gasses and refrigerants, CFC-free, tested by the DVGW



DVGW tested
Reg.-No. 83.01 e 538



Highly sensitive foam spray:
Quick and certain location of leaks



Model	Contents	g	No.	No.
ROTEST® leak detection spray	400 ml	470	12	6.5000

Pipe Freezing Systems

ROFROST TURBO 1.1/4" and 2"

High-Tech pipe freezing system for copper, steel and plastic composite pipes



Product Profile

APPLICATION AREA

Ideal for maintenance, repair and expansion work in sanitary and heating installations; safe and controlled freezing

KEY FEATURES

- 1 Fully automatic and monitored freezing
- 2 Portable use, optimal for the service industry
- 3 Also for use in confined spaces
- 4 Safe, controlled freezing and monitoring
- 5 High flexibility and uninterrupted operation

KEY FEATURES

- 6 Reduction inserts in various sizes
- 7 Over head freezing possible
- Environmentally friendly: CFC-free

TECHNICAL DATA

Copper pipes:	Ø 10 - 42 mm	Rofrost Turbo 1.1/4"
	Ø 10 - 60 mm	Rofrost Turbo 2"
	Ø 1/2 - 1.3/8"	Rofrost Turbo 1.1/4"
Steel pipes	Ø 1/4 - 1.1/4"	Rofrost Turbo 1.1/4"
	Ø 1/4 - 2"	Rofrost Turbo 2"
Plastic pipes, as well as plastic composite pipes		

5



4 Large temperature display

Safe, controlled freezing and monitoring

Heat conductive paste enables fully automatic freezing without spraying



5 Flexible plastic capillary pipes

High flexibility and uninterrupted operation

3 Simple clamping system

For use even in confined spaces

2 Compact design

Portable use, optimal for service industry

1 Intelligent software

Fully automatic and monitored freezing

6 For pipes with Ø 10 mm - 2.1/8"

Reduction inserts in various sizes



Space requirements for freezing clamps
ROFROST TURBO 1.1/4"

A_{min} = 27 mm
B_{min} = 37 mm

Use on vertical pipes in corners

B_{min} = 52 mm

Use on pipes wall fitting / valve

A_{min} = 13 mm

Use on vertical pipes on walls

Space requirements for freezing clamps
ROFROST TURBO 2"

A_{min} = 37 mm
B_{min} = 45 mm

Use on vertical pipes in corners

A_{min} = 57 mm

Use on pipes wall fitting / valve

A_{min} = 17 mm

Use on vertical pipes on walls

7 Over head freezing possible



Reduction Inserts

Reduction inserts					Rofrost Turbo 1.1/4"				Rofrost Turbo 2"				
Copper mm	Copper inch	Steel inch	No.	Size	6.2200	6.2201	6.2202	6.2220	6.2203	6.2204	6.2205	6.2206	6.2240
					230V 50Hz	110V 50Hz	115V 60Hz	230V 50Hz	230V 50Hz	110V 50Hz	115V 60Hz	230V 50Hz	230V 50Hz
10 mm	3/8"	G 1/8	6.2217	I	●	●	○	○	○	○	○	○	○
12 mm	1/2"		6.2211	II	●	●	●	○	○	○	○	●	○
14/15 mm		G 1/4	6.2212	III	○	●	○	○	○	○	○	○	○
16 mm	5/8"		6.2219	IV	○	○	●	○	○	○	○	○	○
18 mm		G 3/8	6.2213	V	●	●	○	○	○	○	○	●	○
20 mm	1"		6.2224	VI	○	○	●	○	○	○	○	○	○
22 mm	7/8"	G 1/2	6.2214	VII	●	●	●	●	○	○	○	●	○
	1"		6.2226	VIII	○	○	●	○	○	○	○	○	○
28 mm		G 3/4	6.2215	IX	●	●	○	○	○	○	○	○	○
	1.1/8"		6.2227	X	○	○	●	○	○	○	○	○	○
32 mm	1.1/4"		6.2221	XI	○	○	○	○	○	○	○	○	○
35 mm	1.3/8"	G 1	6.2216	XII	●	●	●	○	○	○	○	○	○
28 mm		G 3/4	6.2231	A					●	●	●	●	○
	1.1/8"		6.2232	B					○	○	○	○	○
32 mm	1.1/4"		6.2233	C					○	○	○	○	○
35 mm	1.3/8"	G 1	6.2234	D					○	●	●	○	○
42 mm		G 1.1/4	6.2235	E					●	●	●	●	●
		G 1.1/2	6.2236	F					●	●	●	●	○
54 mm	2.1/8"		6.2237	G					●	○	○	●	○

● = Set contents ○ = Available optionally

Anti-kink, diffusion proof mono-tube system with plastic capillary pipes guarantees high flexibility and uninterrupted operation



Excellent overall size for working close to walls or on floors



Can also be used with parallel running pipes and in confined spaces



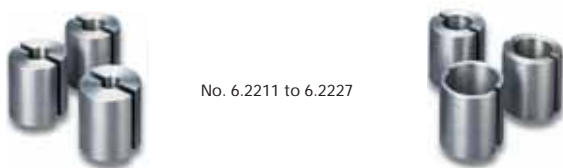
Trouble-free use near walls, only 52 mm contact surface on pipe required



For additional accessories see 170

Pipe Freezing Systems

ROFROST Reduction Inserts



No. 6.2211 to 6.2227

ROFROST TURBO 1.1/4"

Reduction inserts Size	Nom. size Cu	Nom. size Cu	Nom. size Fe	g	No.
Gr. I	10 mm	3/8"	1/8"	190	6.2217
Gr. II	12 mm	1/2"	-	180	6.2211
Gr. III	14/15 mm	-	1/4"	170	6.2212
Gr. IV	16 mm	5/8"	-	170	6.2219
Gr. V	18 mm	-	3/8"	165	6.2213
Gr. VI	20 mm	3/4"	-	155	6.2224
Gr. VII	22 mm	7/8"	1/2"	145	6.2214
Gr. VIII	-	1"	-	125	6.2226
Gr. IX	28 mm	-	3/4"	110	6.2215
Gr. X	-	1.1/8"	-	90	6.2227
Gr. XI	32 mm	1.1/4"	-	80	6.2221
Gr. XII	35 mm	1.3/8"	1"	65	6.2216



ROFROST TURBO 2"

Reduction inserts Size	Nom. size Cu	Nom. size Cu	Nom. size Fe	g	No.
Gr. A	28 mm	-	3/4"	190	6.2231
Gr. B	-	1.1/8"	-	180	6.2232
Gr. C	32 mm	1.1/4"	-	170	6.2233
Gr. D	35 mm	1.3/8"	1"	170	6.2234
Gr. E	42 mm	-	1.1/4"	165	6.2235
Gr. F	-	-	1.1/2"	155	6.2236
Gr. G	54 mm	2.1/8"	-	145	6.2237
Expansion set 12 - 15 - 18 - 22 mm					6.2230

The reduction insert size E, 42 mm serves as an adaptor piece for fitting ROFROST TURBO 1.1/4" reduction inserts size I – size XII



No. 6.2291

ROFROST Heat Conductive Paste

Description	Contents	g	No.
ROFROST Heat Conductive Paste	150 ml	130	1 6.2291

For optimal heat conduction between cold sleeve, reduction insert and pipe surface. Residue free work, physiologically neutral

5



Plastic freezer heads

Efficient freezing in small spaces

No emptying of the pipes required

Safe, time-saving application



Set (No. 6.4020) includes: Individual components Parts-No. 1 - 10

Model	Parts-No.	g	No.
ROFROST Handy		2400	6.4020
ACCESSORIES			
Quick Freeze freezing spray	1	500	6.4001
Freezer head 1/4"	2	70	6.4021
Freezer head 3/8"	3	80	6.4022
Freezer head 1/2"	4	80	6.4023

ROFROST Handy

The fast, portable freezing system for copper and steel pipes Ø 15 - 28 mm (1/4 - 3/4")



Product Profile

KEY FEATURES

- Pipe freezing system is ideally for quick repairs and small expansion tasks for sanitary, heating and water installations
- Enables the installation of additional service valves
- Exchange of fittings on defective service valves
- Enables the exchange of heating pumps

TECHNICAL DATA

Copper pipes: Ø 15 - 28 mm
Steel pipes: Ø 1/4 - 3/4"

Quick Freeze Spray – can be used everywhere and is environmentally friendly. Is also used for medical technology



Model	Parts-No.	g	No.
Freezer head 3/4"	5	120	6.4024
Internal hexagonal screwdriver	6	500	6.5046
Foam insert	7	20	6.4026
Plastic carrying case without inlay	8	400	3.0898
Inlay for plastic carrying case	9	10	6.2045
ROTHENBERGER fleece cloth	10	10	9.3915

Pipe Freezing Systems



ROFROST CO2 Freezer Set

Manual freezing set Ø 10 - 60 mm

Product Profile

KEY FEATURES

- For quick, easy and safe freezing using carbon dioxide – CFC free

TECHNICAL DATA

Copper pipes: Ø 10 mm - 60 mm
Ø 1/2 - 2.1/8"

Steel pipes: Ø 1/8 - 2"

Plastic pipes, as well as plastic composite pipes



Freezer heads offer constant block clamping of pipe diameter
No breaking of freezing sleeve

19-part set (No. 6.5030) includes: 2 handles with feed valves (No. 6.5032), 2 high pressure hoses (No. 6.5033), 10 pairs of freezer heads (2 for each pipe dimension) (see table page 169), T-piece for bottle connection (No. 6.5034), stopper for one-sided freezing (No. 6.5049), wrench (No. 6.5045), internal hexagonal screwdriver (No. 6.5046), in plastic carrying case (No. 6.5031)

for Copper pipes Ø mm	for Copper pipes Ø inch	for Steel pipes Ø inch		No.
10 - 60	1/2 - 2.1/8"	1/8 - 2"	4.9	6.5030

Carbon dioxide offers high refrigeration power up to -79° C

Extremely short freezing times

Use carbon dioxide bottles only with stand pipes



No emptying of pipes required

Safe, time-saving application

Plastic freezer heads

Efficient freezing in small spaces



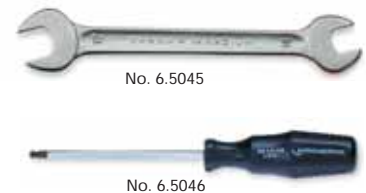
ROFROST Freezer Heads

Made of extremely cold-resistant special plastics

Size	for Copper pipes Ø mm	for Copper pipes Ø inch	for Steel pipes Ø inch		No.
1	10 - 12	1/2"	1/8"	60	6.5035
2	14 - 15	-	1/4"	60	6.5036
3	16 - 18	5/8"	3/8"	70	6.5037
4	22	3/4 - 7/8"	1/2"	70	6.5038
5	28	1.1/8"	3/4"	110	6.5039
6	35	1.3/8"	1"	110	6.5040
7	42	1.5/8"	1.1/4"	210	6.5041
8	-	-	1.1/2"	210	6.5042
9	54	2.1/8"	-	250	6.5043
10	60	-	2"	250	6.5044



ROFROST CO2 Spare Parts



Description		No.
Handle with feed valve and bayonet connection	180	6.5032
High pressure refrigerant hose, 2 m	140	6.5033
Refrigerant hose extender set (2 x 2 m with 2 connectors)	290	6.5047
T-piece with bottle connections W 21,8 x 1/14	1650	6.5034

Description		No.
Stopper for one-sided freezing	10	6.5049
Repair set (nozzle/filter piece) for feed valve	20	6.5048
Wrench 14 x 17 mm	1670	6.5045
Internal hexagonal screwdriver No. 4	500	6.5046
Plastic carrying case	2600	6.5031