

FULLY PUMPED OR GRAVITY SYSTEM

The installer will have set the programmer to suit the installed system. If this is a Fully pumped system this will allow independent control of the Central heating and Hot water, however on a Gravity system the Central heating and Hot water are linked so that it is not possible to use the Central heating independently. This will allow only one common time setting for both Hot Water and Central Heating.

BATTERY

The programmer is fitted with a non-rechargeable, long life battery, which will maintain the programmed time settings for a minimum of ten months with the supply disconnected. THIS SHOULD BE SUFFICIENT TO COVER POWER INTERRUPTIONS DURING THE LIFE OF THE UNIT. During power interruptions the display will be blank, after 3 days the current time of day will be lost. If the programmer is not to be used for a long period of time, the switch on the rear of the unit should be returned to the BATTERY OFF position. These are both to prolong the battery life.

SERVICE AND REPAIR

This programmer is NOT user serviceable. Please do not dismantle the unit. In the unlikely event of a fault developing please refer to the RESETTING THE PROGRAMMER section of this user guide located on page 2. If this fails to resolve the problem please contact a local heating engineer or a qualified electrician.

QUESTIONS AND ANSWERS

The display only reads bAT	Turn the battery on. The switch on the rear of the unit must be in either the Fully Pumped or Gravity position.
The unit display has become frozen	This could be due to local electrical interference Using the RESET procedure may rectify the fault.
The indicator neon fails to illuminate on Hot Water or Central Heating channel	Using the RESET procedure may rectify the fault. If the problem persists the programmer will need replacing.
The indicator neon will illuminate but the pump and/or boiler fails to operate	This may indicate a problem elsewhere in your system; E.g. A zone valve, etc. please contact a registered installer for advice.
There is no display on the programmer	Try the RESET procedure on page 2, if this fails to rectify the problem please have the mains supply checked
How do I know if the programmer is still under warranty	The ChannelPlus XL range comes with a 5 year guarantee from the date of manufacture. This date is located on the rear of the unit, indicated by a month over a year
How is the programmer removed from the wall	WARNING: The ChannelPlus programmer must only be removed from it's backplate by either a qualified electrician or heating engineer; The programmer plugs in to a 9 pin backplate located on the rear of the unit and is secured using 2 screws located on the top surface of the unit. Undo these screws and pull forward and down in an arc motion
When setting the programme times, the setting 'bounces' by 10 minute periods	This indicates that you have reached an existing set time period, you will be unable to set a new ON/OFF time unless there is an alteration to the existing timed period

Horstmann Controls Limited
Bristol
BS4 1UP



LEAFLET No P32621
ISSUE 3

Email: sales@horstmann.co.uk
Website: www.horstmann.co.uk

CHANNELPLUS H27XL
USER INSTRUCTION



HORSTMANN

Horstmann's ChannelPlus H27XL - Two Channel Programmer Offers up to three programmed operating periods per day, seven days a week, with independent Boost and Advance control on Fully Pumped Systems. Can be used as a direct replacement for Horstmann 425 Diadem, Tiara and H527 (Allowing for new programmer position).

The following are some of the easy to operate features:-

Flexible 7 Day Control

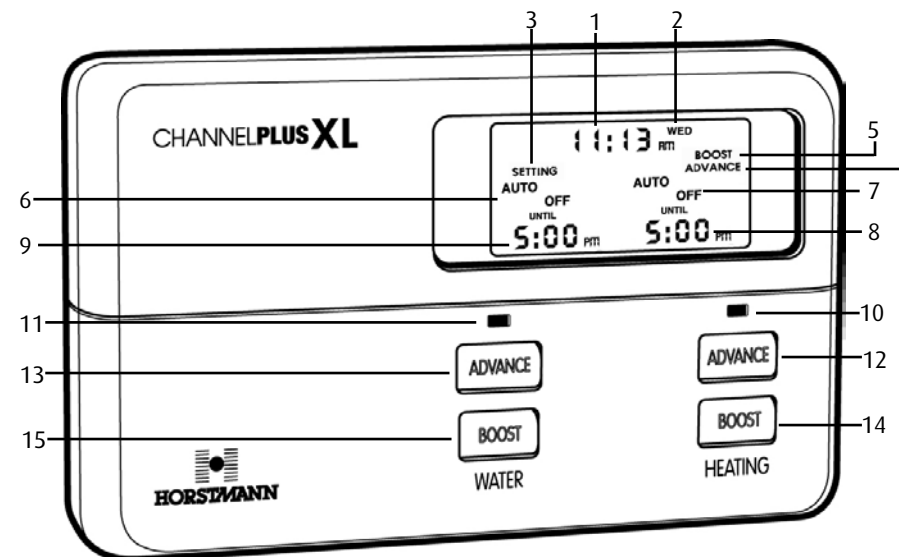
1 or 2 Hour Boost on each channel

Independent timing on Hot Water and Heating

Advance control gives instant On/Off override

Up to 3 On/Off periods per channel in each 24 Hr operation.

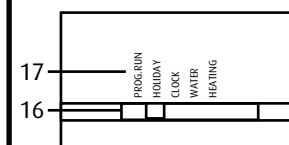
Programme options: Auto / All day / On constantly / Off



LCD DISPLAY FEATURES

- 1 Current TIME OF DAY
- 2 Day of Week Indicator
- 3 Switch time SETTING indicator
- 4 ADVANCE symbol
- 5 BOOST symbol
- 6 Current Hot water programme
- 7 Current Central heating programme
- 8 Next Central heating switch time
- 9 Next Hot water switch time

Internal Slide Switch - located under front cover



16 SET slider switch
17 SET Positions

LED INDICATOR

- 10 Central heating ON indicator
- 11 Hot water ON indicator

EASY TO USE PROGRAMME AND FEATURE BUTTONS

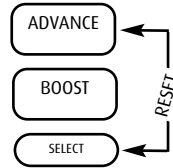
- 12 Central heating ADVANCE(ENTER) button
- 13 Hot water ADVANCE (PLUS) button
- 14 Central heating BOOST(COPY) button
- 15 Hot water BOOST (MINUS) button

Both the Central heating and Hot water SELECT buttons are located under the front cover Page 1

RESETTING THE PROGRAMMER

Electronic equipment can in some circumstances be affected by electrical interference. If the programmer's display becomes frozen or scrambled; or if you wish to revert back to the default time settings please use the following procedure.

Lower the front flap of the unit. On the Heating channel press the ADVANCE and SELECT buttons together then release the buttons and the programmer will return to the preset factory settings.

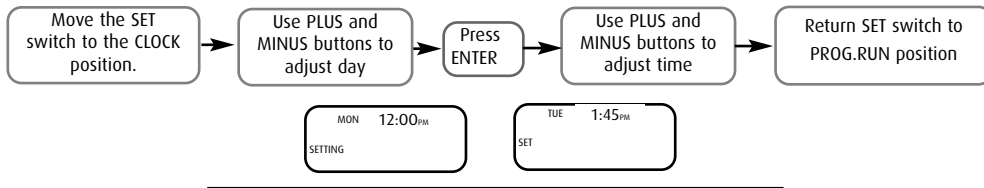


FRONT COVER

The normal working position for the SET switch is in the PROG.RUN position. In order to remind the user of this, the flap is unable to be closed with the switch in any other position.

The simple instructions below are designed to help with the programming of the unit. All the following instructions require the front flap to be lowered. Please replace the flap when normal operation is required.

SETTING DAY AND TIME OF DAY

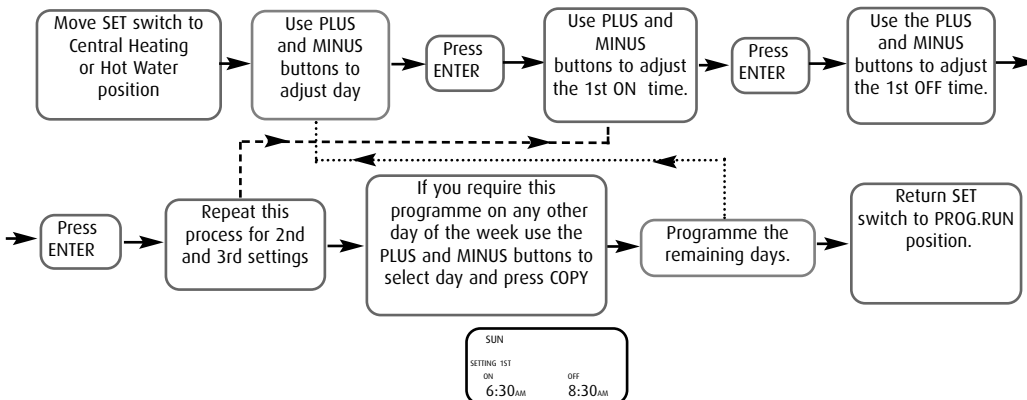


DEFAULT TIME SETTINGS

The default factory settings are shown, however if you wish to change these proceed as instructed below.

	1st ON	1st OFF	2nd ON	2nd OFF	3rd ON	3rd OFF
MON-FRI	6:30 AM	8:30 AM	12:00 PM	12:00 PM	4:30 PM	10:30 PM
SAT/SUN	7:30 AM	10:30 AM	12:00 PM	12:00 PM	5:00 PM	11:00 PM

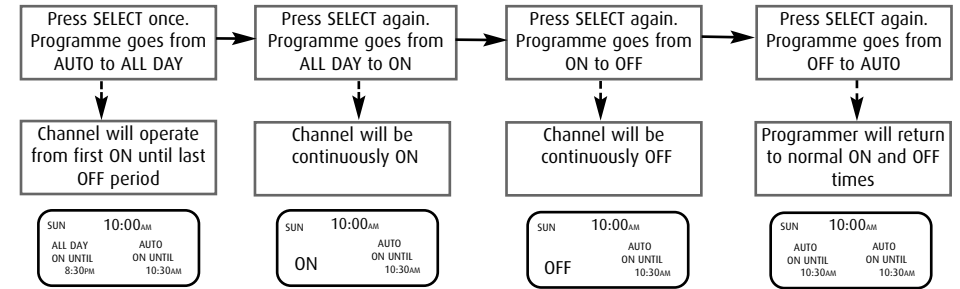
SETTING THE ON AND OFF TIMES



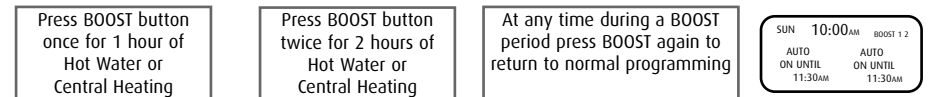
Should you encounter any problems, please refer to the **Question and Answer** section located on page 4.

SPECIAL FEATURES

The SET slide switch must be in the PROG.RUN position for the following instructions. The following actions work independently on either Hot Water or Central Heating.

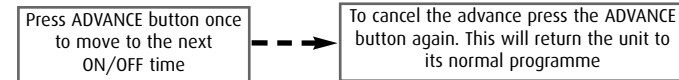


BOOST FUNCTION - 1 or 2 hour temporary override

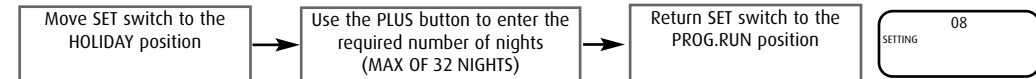


On the ChannelPlus display - Boost 1 is Hot water extension 1 or 2 hour and Boost 2 is Heating extension 1 or 2 hours

ADVANCE FUNCTION - Brings forward next on or off operation



HOLIDAY FUNCTION - Allows system to be programmed for up to 32 days



Whilst the HOLIDAY FUNCTION is in operation the system will remain OFF, the display will show the number of nights remaining. The HOLIDAY setting is an instant function and cannot be set in advance. The HOLIDAY FUNCTION can be cancelled at any time by pressing any of the SELECT buttons. Normal programme functions will resume at the first ON period after the pre-set number of nights has expired.

INFORMATION AND ADVICE

Programming ON/OFF times

If a Heating or Hot water period is not required it can be cancelled by setting the ON and OFF settings to the same time. Example ON 10:00am OFF 10:00am

Your programmer will prevent you from accidentally overlapping ON and OFF times.

Example: If the 2nd ON time is set at 12:00pm and then you try and set the 1st OFF at 12:30 pm the OFF setting will 'bounce' by a 10 minute period until the 2nd ON time has been adjusted.