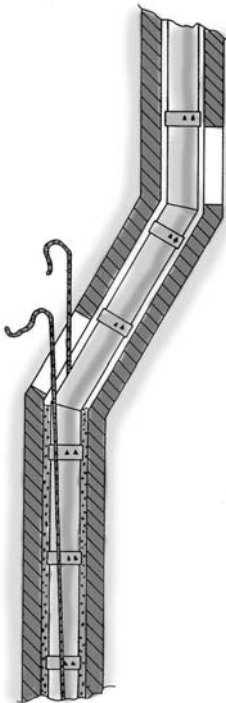


SCHIEDEL

ISOKERN®



Instructions for chimney lining

- light pumice highly insulated chimney lining system.
- Isokern is suitable for all fuels and able to withstand flue gas temperatures of limited duration of up to 1100°C.

INTRODUCTION

HAVE YOU GOT A PROBLEM WITH YOUR OLD CHIMNEY? TAR COMING THROUGH BETWEEN THE BRICKWORK? POOR BOILER ECONOMY AND POLLUTION BECAUSE OF TOO LARGE A FLUE SIZE? EXCESSIVE WEAR AND CORROSION? CONDENSATION?

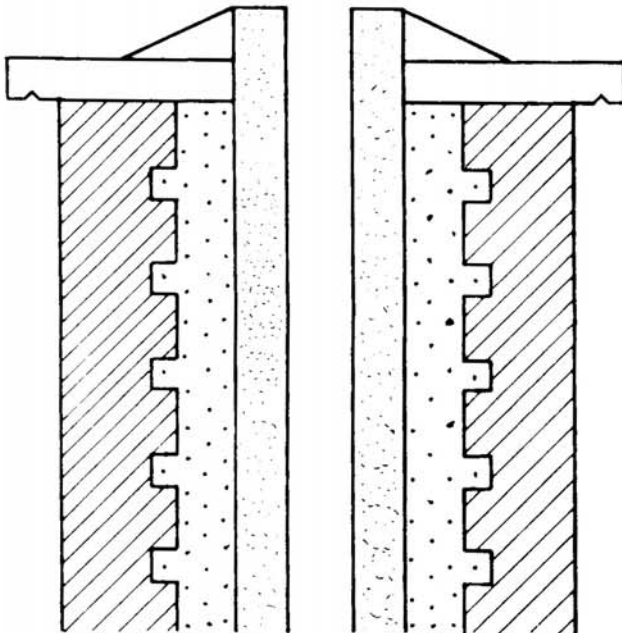


RELINING WITH ISOKERN FLUE LINERS AND LECA INSULATION GIVES YOU VASTLY IMPROVED DRAUGHT, BETTER FUEL ECONOMY AND A FLUE THAT IS GOING TO BE SAFE AND LAST AT LEAST 60 YEARS UNDER NORMAL CONDITIONS.

HOWEVER, IT IS STILL THE RESPONSIBILITY OF THE OCCUPIER TO OPERATE AND MAINTAIN THE CHIMNEY IN A PROPER MANNER.

ISOKERN FLUE LINERS ARE SUITABLE FOR GAS, OIL, COAL, WOOD AND STRAW, IN FACT ANY FUEL, DOMESTIC OR INDUSTRIAL USE.

WE BELIEVE THERE IS NO BETTER CHIMNEY SYSTEM AVAILABLE!
PROVEN OVER 50 YEARS.

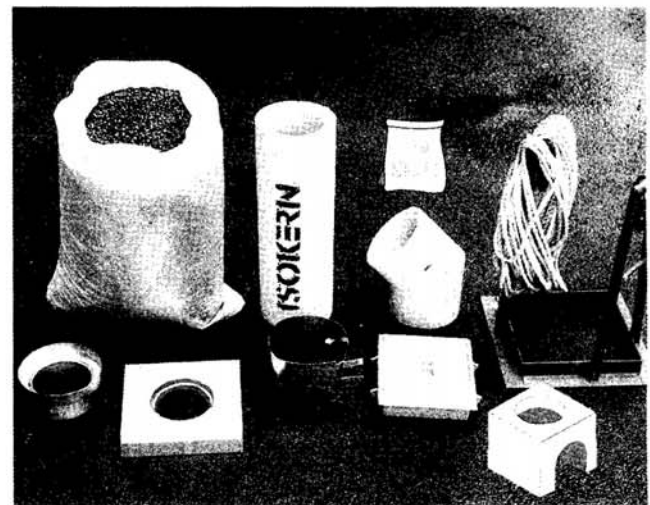


MATERIALS

All the necessary materials and accessories to be used in the chimney are available from ISOKERN. Before proceeding with the work, however, check carefully that the correct size liner has been selected. Sweep the chimney carefully. If in doubt about the internal size, lower one liner only first as a test.

The picture on the right shows:

- | | | |
|-------------------|---|---|
| Bag of insulation | } | Always needed |
| Liner | | |
| Collar | } | These may be needed on some installations |
| Lip Glue | | |
| Hoist rope | | |
| Access block | | |
| Soot door | | |
| Adaptor | | |
| Support block | | |
| Bend | | |



GUARANTEE

The ISOKERN chimney liners are guaranteed against structural failure for a period of 10 years, when installed as per following instructions and by an authorised ISOKERN Distributor or Dealer or any other company or individual trained and authorised by ISOKERN (UK) Limited. Detailed guarantee conditions are available from ISOKERN Distributors and Dealers.

Minimum life expectancy of the ISOKERN liners is 60 years, according to the British Board of Agrément.

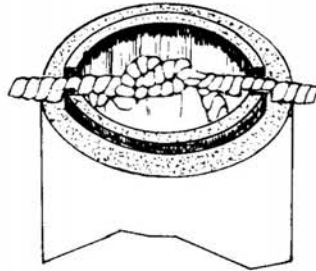
HOW TO RELINE . . .

It is important that the chimney structure is in a sound condition. Any loose or badly deteriorated sections should be rebuilt or repointed before the relining is carried out.

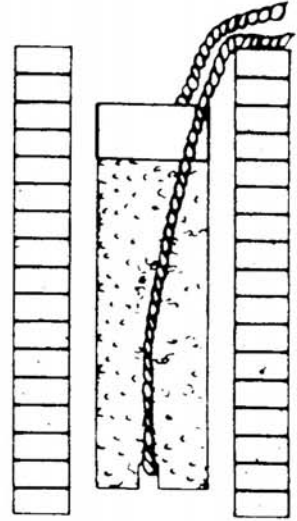
1. Lintels, fixing and register plates must be dimensioned for the weight of the ISOKERN liners and insulation it has to support. Materials must be non-combustible and durable.



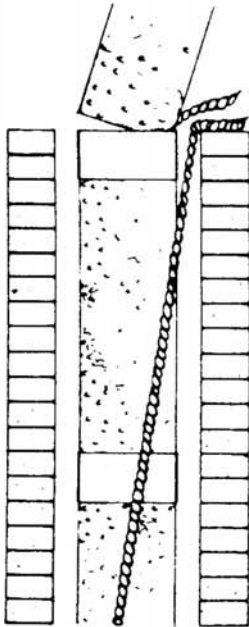
2. Attach the steel collars to the top rebate of the liners to be used. Apply ISOKERN lip glue to liner joints.



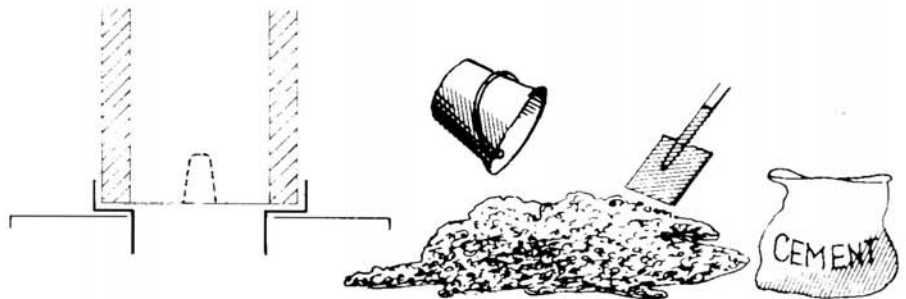
3. Cut two notches in the small end of one liner only. Position the rope in notches with knot accessible after the liner is in place.



4. Turn the liner upside down and lower same into chimney, spigot down.

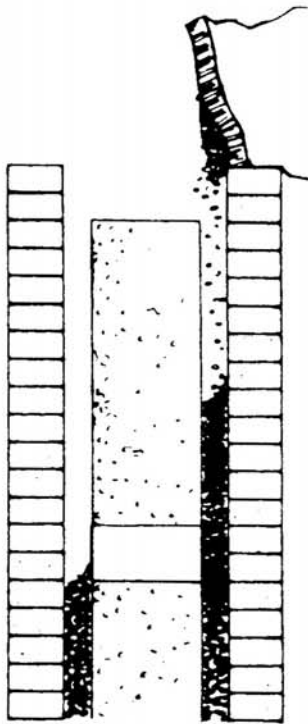


5. Keep adding liners, stacking one on top of the other, while lowering the rope. Loop rope around the outside of the chimney for braking action. If more than 10 liners, you may need the ISOKERN hoist. (As shown in picture on page 1.)

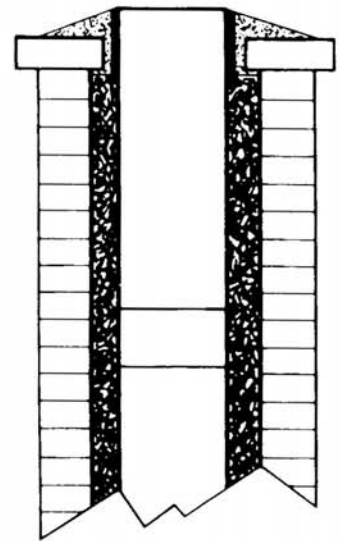


6. When the liner is in position on lintel and register block, or in the ISOKERN adaptor and support block, undo the knot and pull up the rope. Fill the cut-out notches with ISOKERN lip glue.

7. Wet the insulation with a small amount of water. Add cement in proportion 1:20 by volume (1 cement : 20 Leca), one level shovel of cement to one bag Leca, and mix. Put insulation mix back in bag for easy carrying. The purpose of cement mix is to retain the insulation in the event access is required into the chimney for a change of appliance at a later date.



8. Fill insulation/cement mix around the liners. Cover liner top with plastic bag or rug to avoid insulation mix entering the flue. Generally a minimum of 15mm of insulation mix is needed. For industrial or high flue gas temperature appliances, consult ISOKERN (UK) Limited.



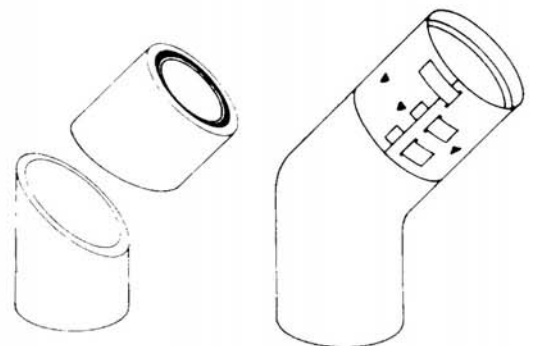
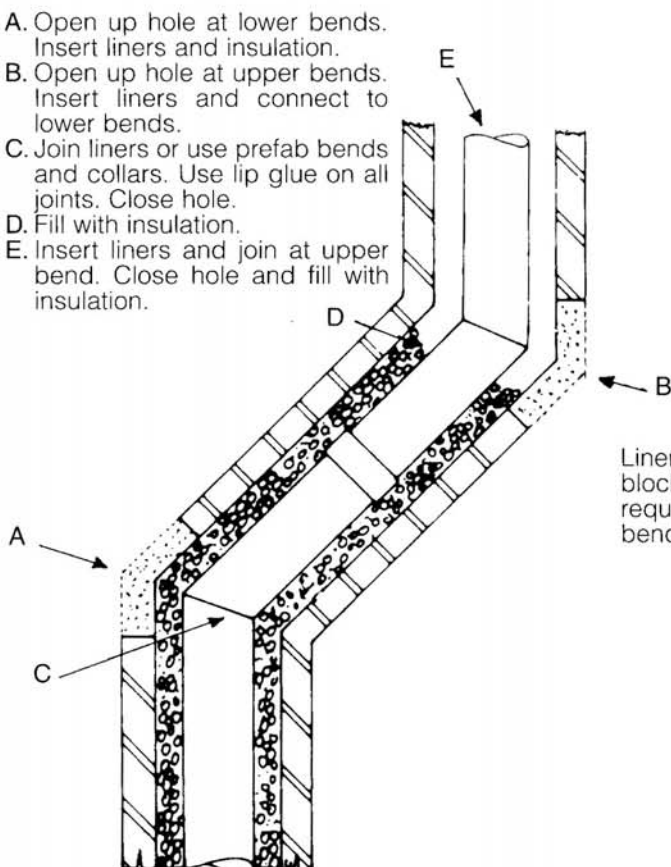
9. Finish off with 1:1½:4½ mortar flaunching.

Ensure that the chimney is completely dry (48 hours) before it is put to use. Keep flue gas temperatures at a maximum 200°C during the first two days.

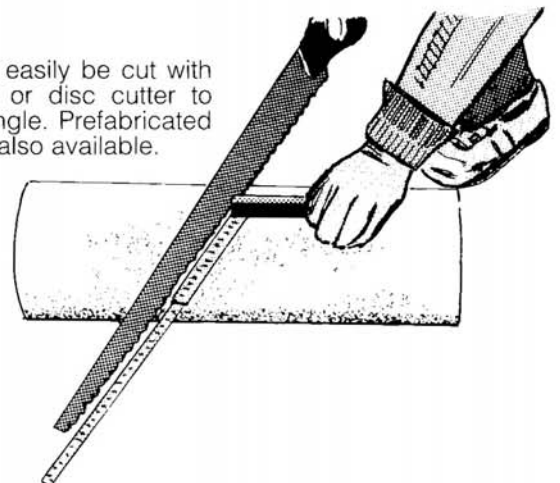
IF THE CHIMNEY HAS BENDS ...

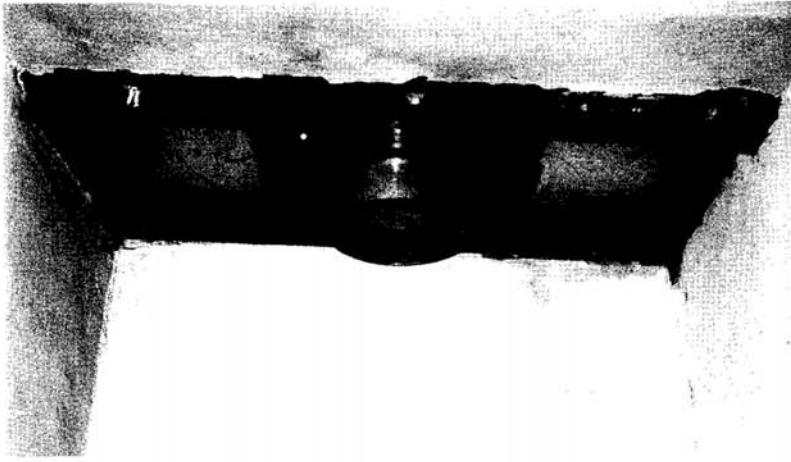
If the chimney has bends, a hole must be taken up at each such point. The above procedure from 1 to 7 is then followed for each straight section, i.e. from lower bend to register plate, from upper bend to lower bend, from chimney top to upper bend.

- A. Open up hole at lower bends. Insert liners and insulation.
- B. Open up hole at upper bends. Insert liners and connect to lower bends.
- C. Join liners or use prefab bends and collars. Use lip glue on all joints. Close hole.
- D. Fill with insulation.
- E. Insert liners and join at upper bend. Close hole and fill with insulation.



Liners can easily be cut with block saw or disc cutter to required angle. Prefabricated bends are also available.

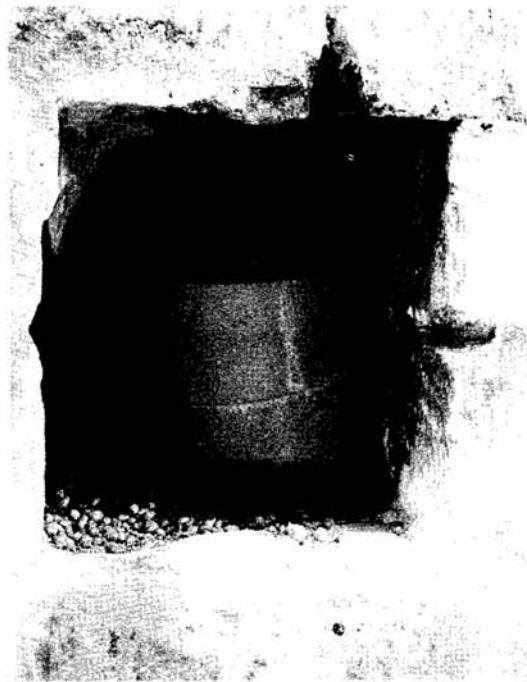




1. Take up a hole at each bend. Prepare a suitable construction at the bottom of the chimney for the liners to stand on using adaptor and support block for flue pipe connection.



2. Start at the lower bend. Keep adding liners with collars on top of each other as they are gradually lowered down to the starting point of the chimney.



3. Fix the angled liner in position using lip glue and if prefabricated bends are used, with a stainless steel collar where necessary.



4. Repeat the same procedure lowering liners from the upper bend. Join the liners with a collar where necessary and lip glue.

Ensure the angled liners are centralised in the chimney, pour LECA mix and replace bricks in wall.



5. Before inserting the next liner apply lip glue to top rebate and then fit collar.



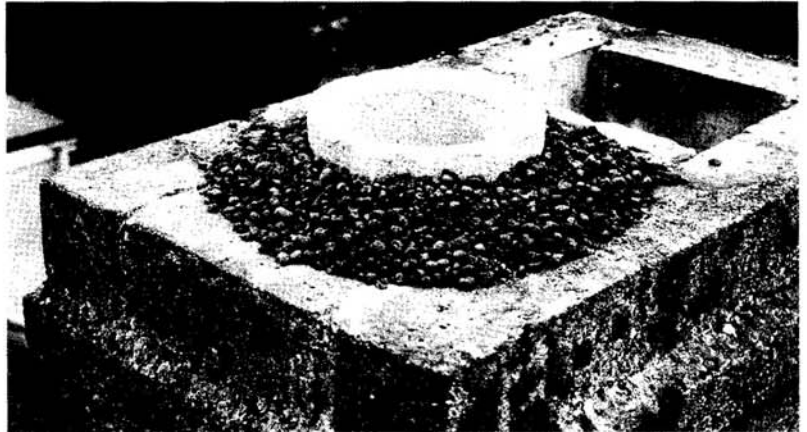
6. Lower liners from chimney top and join at upper bend. Close the hole at the bend and fill with insulating mix.



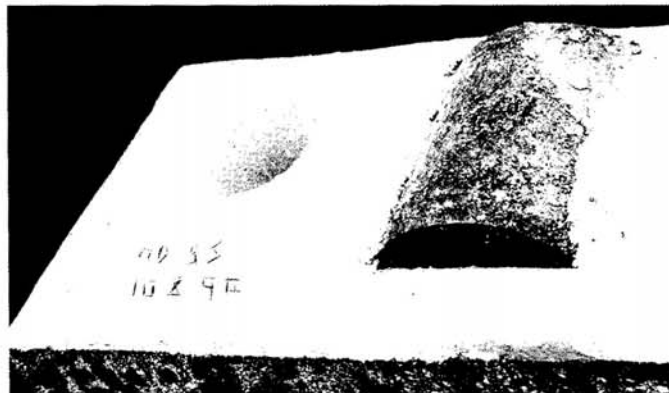
7. Wet the insulation with a small amount of water.



8. Add cement in proportion 1:20 by volume (1 cement : 20 leca) 1 level shovel of Portland cement to one bag of leca..



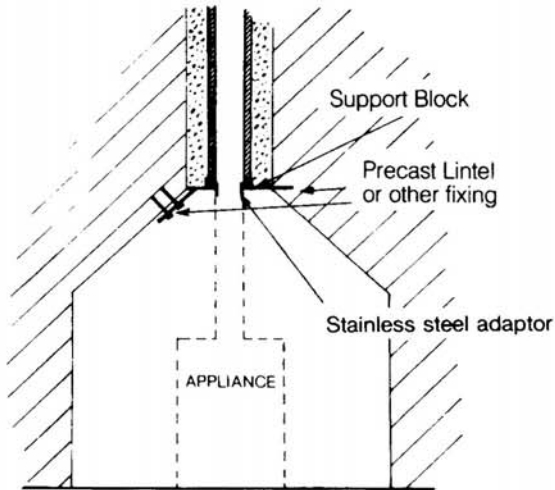
9. Remove the rope and pour the wet insulation mix around the liners (block flue with plastic bag during pouring, then remove).



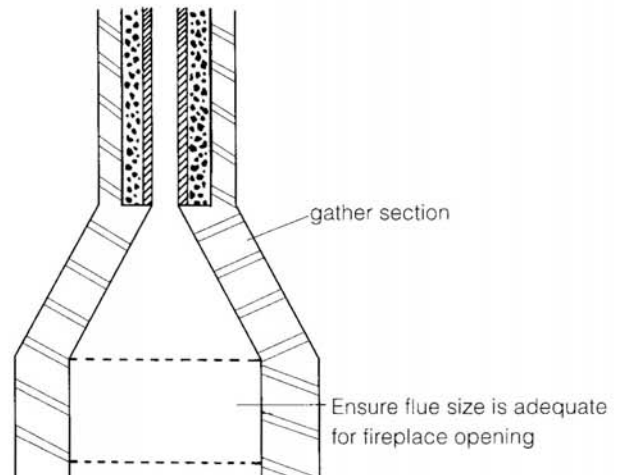
10. Finish off the chimney top with a suitable flaunching in mortar. Liner protrusion above brick/stone to be minimum 100mm.

FLUE CONNECTIONS

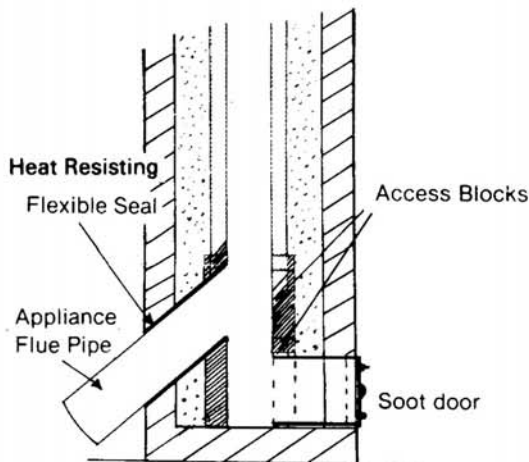
Alt. 1 APPLIANCE IN FIREPLACE OPENING



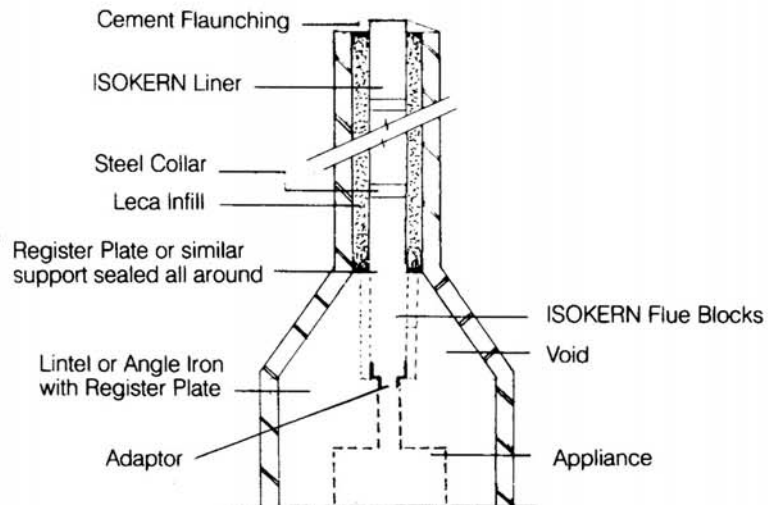
Alt. 2 OPEN FIRE



**Alt. 3 APPLIANCE FLUE PIPE TO CHIMNEY
Entering at 45° angle**



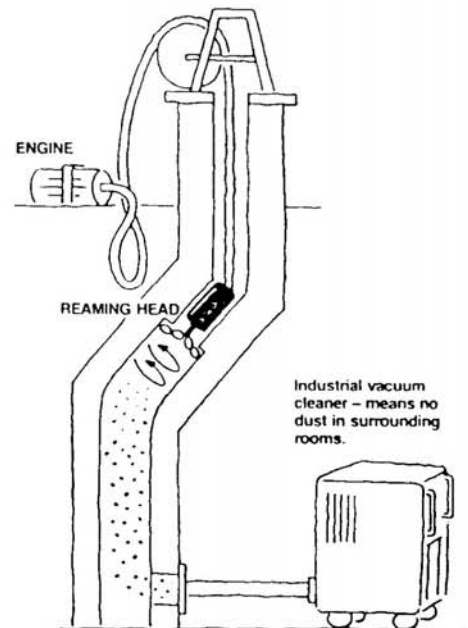
Alt. 4 INGLENOOK RELINING



CHIMNEY REAMING

The internal dimensions of a chimney/flue may be enlarged to a certain extent in order to accommodate the desired size of ISOKERN flue liner by means of reaming the chimney. The same method may also be used to remove debris, obstructions, old flue liners and hardened tar in the chimney before relining same with ISOKERN liners.

The ISOKERN chimney reaming tool is operated by selected installers only. The process is effective and does not cause undue stress or damage to the chimney. Contact ISOKERN (UK) Ltd. for advice about your nearest ISOKERN reaming tool operator.



Liners & Accessories

All dimensions are external unless otherwise stated.

Product Code	Description	Weight (kg)
Round Liners		
10013	130mm i/d 600mm high Rebated liner (180mm o/d)	7
10015	150mm i/d 600mm high Rebated liner (200mm o/d)	8
S-10317	170mm i/d 600mm high liner (205mm o/d)	8
10017	175mm i/d 600mm high Rebated liner (235mm o/d)	11
10020	200mm i/d 600mm high Rebated liner (250mm o/d)	12
10022	225mm i/d 600mm high Rebated liner (285mm o/d)	14
S-10025	250mm i/d 600mm high liner (310mm o/d)	16
10030	300mm i/d 600mm high Rebated liner (360mm o/d)	19
10035	350mm i/d 600mm high Rebated liner (416mm o/d)	27
S-10040	400mm i/d 1000 mm high Rebated liner (470mm o/d)	50
S-10045	450mm i/d 1000 mm high Rebated liner (530mm o/d)	60
S-10050	500mm i/d 1000 mm high Rebated liner (590mm o/d)	70
S-10060	600mm i/d 1000 mm high Rebated liner (706mm o/d)	100
S-20015	150/260mm oval 600 mm high liner (200/310mm o/d)	12
T Liners		
T4510015	150mm T rebated liner 45 deg	
T4510017	175mm T rebated liner 45 deg	
T4510020	200mm T rebated liner 45 deg	
Liner Support Blocks (for connection to appliances)		
C40120	150mm i/d 310mm square 75mm high	7
C40122	170/175mm i/d 310mm square 75mm high	6
C40121	200mm i/d 350mm square 75mm high	8
40127	225mm i/d 440mm square 100mm high	20
Access Blocks		
10415	150mm i/d (also for 170mm) 215mm square 205mm high rebated access block	5
10420	200mm i/d (also for 175mm) 280mm square 280mm high rebated access block	12
10422	225mm i/d 310mm square 310mm high rebated access block	14

Stainless Steel Adaptors (for connection to liners)		
U00130	125mm i/d (185mm o/d)	
U00150	150mm i/d (205mm o/d)	
TH00175	175mm i/d (215mm o/d thinwall)	
U00175	175mm i/d (235mm o/d)	
U00200	200mm i/d (255mm o/d)	
U00225	225mm i/d (290mm o/d)	
U00202	200mm i/d (205/315mm o/d oval)	
Stainless Steel Decreaser Adaptors (for connection to liners)		
I100130	100mm i/d (185mm o/d)	
I125150	125mm i/d (205mm o/d)	
I150170	150mm i/d (212mm o/d thinwall)	
I150175	150mm i/d (235mm o/d)	
I150200	150mm i/d (255mm o/d)	
I175200	175mm i/d (255mm o/d)	
I200225	200mm i/d (290mm o/d)	
Terracotta Chimney Pots		
CP150	150mm i/d 450mm high roll top	14
CP200	200mm i/d 450mm high roll top	16
CP220	225mm i/d 300mm high roll top	12
CP225	225mm i/d 450mm high roll top	18
CP250	250mm i/d 450mm high roll top	15
CP300	300mm i/d 450mm high roll top	26
CP350	350mm i/d 450mm high roll top	32
Leca Insulation		
50301	50 litre Leca (0.05m³)	20
Lip Glue		
50303	Lip glue (5kg)	5

Product Code	Description	Weight (kg)	
Liner Bends			
10807	130mm i/d 15° rebated bend	4	
10808	130mm i/d 30° rebated bend	4	
10809	130mm i/d 45° rebated bend	4	
10810	150mm i/d 15° rebated bend	4	
10811	150mm i/d 30° rebated bend	5	
10812	150mm i/d 45° rebated bend	6	
S-10702	170mm i/d 15° rebated bend	4	
S-10703	170mm i/d 30° rebated bend	5	
S-10704	170mm i/d 45° rebated bend	6	
10813	175mm i/d 15° rebated bend	5	
10814	175mm i/d 30° rebated bend	6	
10815	175mm i/d 45° rebated bend	8	
10816	200mm i/d 15° rebated bend	5	
10817	200mm i/d 30° rebated bend	6	
10818	200mm i/d 45° rebated bend	8	
10819	225mm i/d 15° rebated bend	7	
10820	225mm i/d 30° rebated bend	8	
10821	225mm i/d 45° rebated bend	11	
S-10822	250mm i/d 15° bend	8	
S-10823	250mm i/d 30° bend	8	
S-10824	250mm i/d 45° bend	9	
S-10825	300mm i/d 15° rebated bend	10	
S-10826	300mm i/d 30° rebated bend	10	
S-10827	300mm i/d 45° rebated bend	12	
S-10828	350mm i/d 15° rebated bend	14	
S-10829	350mm i/d 30° rebated bend	14	
S-10830	350mm i/d 45° rebated bend	17	
Collars			
10213	130mm Collar	10216	150mm Collar
10217	175mm Collar	10220	200mm Collar
10222	225mm Collar	10225	250mm Collar
10230	300mm Collar	10235	350mm Collar
20215	Oval Collar		

Euro Topguards		
RGC1	Euro Topguard Buff 125-250mm i/d	
RGT1	Euro Topguard Terracotta 125-250mm i/d	
RGTL300	Euro Topguard Terracotta 300mm i/d	
RGTL350	Euro Topguard Terracotta 350mm i/d	
Soot Door/Insulation Plug		
50101	300x250mm double soot door & spigot	10
50109	300x250mm double soot door	7
50031	150mm i/d 200mm square insulation plug	5
Chimney Data Plate		
C Plate	Chimney data plate	
Smoke Pellets		
Pellet	Smoke Pellets (6 per tube)	

DEALER STAMP

ISOKERN
OVER 50 YEARS IN USE
THE PROVEN INSULATED LINING SYSTEM

14 Haviland Road, Ferndown Industrial Estate
Wimborne, Dorset BH21 7RF
Tel. 01202 861650 Fax. 01202 861632
E-mail: sales@isokern.co.uk
www.isokern.co.uk